

CERTIFIED LAND CORNER RESTORATION

Index No. 8-R-10
34-7

State of Wisconsin }
County of Lanai } ss.

I Raymond J. Hallisy, do hereby certify that on the 1st day of October, 1977, I found evidence of the W1/16 corner of 21 & 28 Township 34, North, Range XXE 9E, Fourth Principal Meridian, as described hereon; and that from this evidence I established a new monument and accessories as described hereon to perpetuate the original location of this corner.

Resident witnesses:
.....
.....
.....

History of original corner establishment:

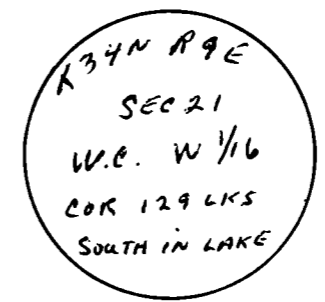
Corner set in the 1930 resurvey.
This corner set as a witness corner on north side of small lake.
True corner is 129 links south in lake.

Description of corner evidence found:

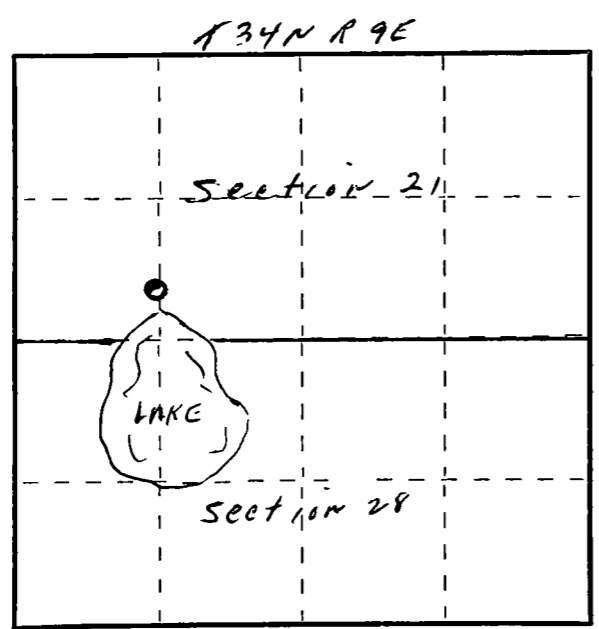
I reset this corner with a 2" iron pipe on October 5, 1969. ~~THINK~~
When visited October 1, 1977 I found the pipe gone.
BT's - .8" Black Spruce S78W 21 Ft 3 inches
10" Red Maple S3E 12 Ft 10 inches
Old pine stump BT Marked MC 1/8 BT

Description of monument and accessories I established to perpetuate the original location of this corner.

Set 2" iron pipe with brass cap
BT's in good shape



FORM 985 H. C. MILLER CO. MILWAUKEE



○ = Corner monument restored.

Dated at Antigo, Wis., this 1st day of October, 1977.

Signature Raymond J. Hallisy Title Land surveyor Registration No. S685
(County Surveyor, Registered Land Surveyor, or other duly authorized official)

Office of Register of Deeds, County of Lanai, I hereby certify that the within instrument was filed in this office for record on the day of, 19..... at o'clock M.

.....
(Register of Deeds)
By..... Deputy

CERTIFIED LAND CORNER RESTORATION

34-9
Index No. Q-R-10

State of Wisconsin }
County of Langlade } ss.

I Raymond J. Hallisy, do hereby certify that on the 5th day of October, 1969, I found evidence of the W 1/16 witness corner of Section 21 Township T34, North, Range 9E, Fourth, Principal Meridian, as described hereon; and that from this evidence I established a new monument and accessories as described hereon to perpetuate the original location of this corner.

History of original corner establishment:

Corner set in the 1930 resurvey. This corner set as a witness corner on north side of small lake. True corner is 129 links south in lake.

Description of corner evidence found:

Found old stake standing marked 1/8. Old pine stump BT marked MC 1/8 BT

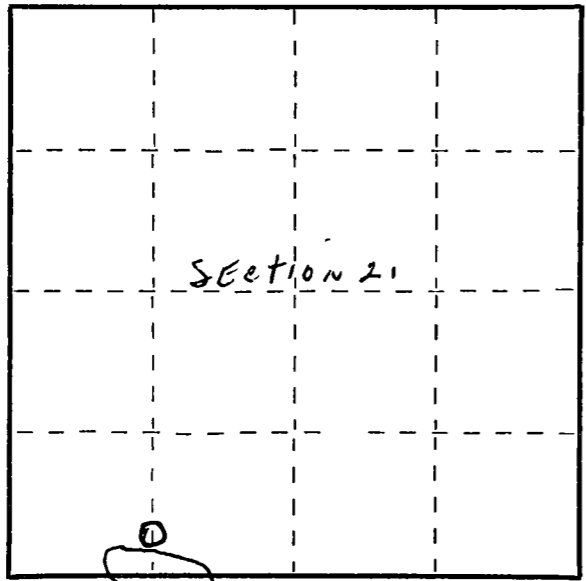
Resident witnesses:

Description of monument and accessories I established to perpetuate the original location of this corner.

Set ~~22~~ 2" pipe with brass cap
B.T.'s to corner
Black spruce 8" S78W 21 Ft 3 inches
Red Maple 10" S3E 12 Ft 10 inches
B.T.'s faced at base of tree and scribed BT



FORM 985 H. C. MILLER CO., MILWAUKEE



○ = Corner monument restored.

Dated at Antigo, Wis., this 5th day of October, 1969

Signature Raymond J. Hallisy Title Reg. Land Surveyor Registration No. S-685
(County Surveyor, Registered Land Surveyor, or other duly authorized official)

Office of Register of Deeds, County of _____, I hereby certify that the within instrument was filed in this office for record on the _____ day of _____, 19____ at _____ o'clock _____ M.

(Register of Deeds)

By _____ Deputy