

CERTIFIED LAND CORNER RESTORATION

State of Wisconsin }
County of Langlade } ss.

History of original corner establishment:

Corner set in the 1930 resurvey.

I, Raymond J. Hallisy, do hereby certify that on the 2nd day of May, 19 70, I found evidence of the E. 1/16 corner of Section 20 Township 34, North, Range 9E, Fourth, Principal Meridian, as described hereon; and that from this evidence I established a new monument and accessories as described hereon to perpetuate the original location of this corner.

Description of corner evidence found:

Found old stake standing in east edge of swamp, marked 1/8

Resident witnesses:

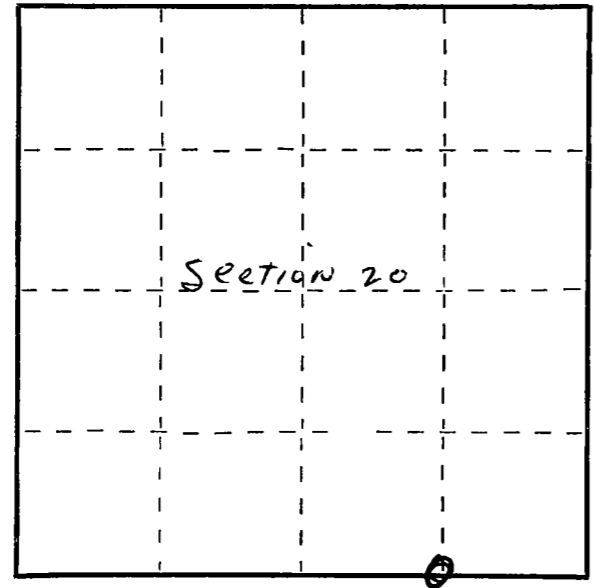
J. Weix
J. Kraska

Description of monument and accessories I established to perpetuate the original location of this corner.

Set 2" pipe with brass cap
New B.T.'s
Tamarack 5" N36E 7 Ft.
Tamarack 4" S45W 3 Ft. 10 inches
B.T.'s faced at base of tree and scribed BT.



FORM 985 R. C. MILLER CO., MILWAUKEE



○ = Corner monument restored.

Dated at Antigo, Wis., this 2nd day of May, 19 70

Signature Raymond J. Hallisy Title Reg. Land Surveyor Registration No. S-685
(County Surveyor, Registered Land Surveyor, or other duly authorized official)

Office of Register of Deeds, County of _____, I hereby certify that the within instrument was filed in this office for record on the _____ day of _____, 19 _____ at _____ o'clock _____ M.

(Register of Deeds)

By _____ Deputy