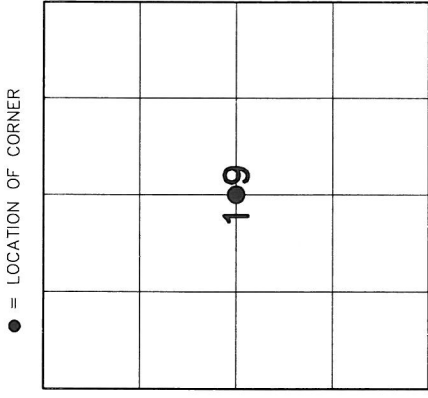


4340919 2020

U.S. PUBLIC LAND SURVEY MONUMENT RECORD

HISTORY OF ORIGINAL CORNER ESTABLISHMENT AND SUBSEQUENT RESTORATION AND DESCRIPTION OF ANY RECORD, MONUMENT OCCUPATIONAL, TESTIMONIAL OR OTHER EVIDENCE CONSIDERED:

- 1911 – HUTCHINSON SET A 6"X6" STONE WITH A CHISELED CROSS
- 2006 – HUGLUND FOUND THE STONE FOR A SURVEY HE WAS CONDUCTING IN THE NE 1/4 OF THE SECTION. NEVER FILING A MONUMENT RECORD
- 2011 – WE WERE WORKING IN THE NW 1/4 OF THE SECTION AND FOUND THE 6"X6" STONE WITH THE CHISELED CROSS

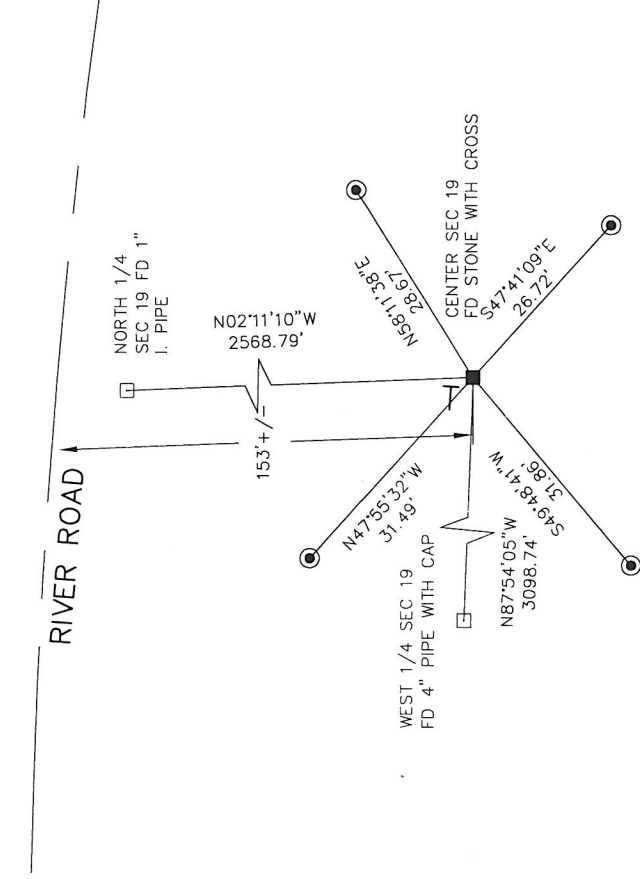


SECTION 19
 TOWNSHIP 34 NORTH, RANGE 9 EAST
 TOWN OF PARRISH
LANGLADE COUNTY, WISCONSIN

CORNER WAS: (CHECK ALL THAT APPLY)

- RESTORED THROUGH ACCEPTANCE OF AN OBLITERATED EVIDENCE LOCATION
- RESTORED THROUGH ACCEPTANCE OF A FOUND PERPETUATED LOCATION
- CONSIDERED A LOST CORNER AND REESTABLISHED THROUGH LOST CORNER PROPORTIONATE METHODS (INCLUDE A PLAN VIEW DRAWING SHOWING DISTANCES AND DIRECTIONS TO OTHER PUBLIC LAND SURVEY CORNERS USED FOR PROPORTIONING AND DETERMINING THE CORNER LOCATION)
- RESTORED OR REESTABLISHED IN A LOCATION THAT DIFFERS FROM A PREVIOUS RESTORATION OR REESTABLISHMENT (INCLUDE A PLAN VIEW DRAWING AND INDICATE WHAT WAS SET AND/OR FOUND)
- CHECK IF THERE IS ADDITIONAL INFORMATION ON BACK

DESCRIBE THE MONUMENT AND ACCESSORIES USED TO PERPETUATE THE LOCATION OF THE CORNER (INCLUDE A PLAN VIEW DRAWING AND INDICATE WHAT WAS SET AND/OR FOUND) ALSO INCLUDE FOUR TIES TO THE SECTION CORNER AND DESCRIPTION OF THE TIES.



SET 3/4"X 24" IRON PIPES AT ALL TIE LOCATIONS
 BEARINGS REFERENCED TO THE LANDGLADE COUNTY COORDINATE SYSTEM
 T -- SET 6' WHITE T-POST

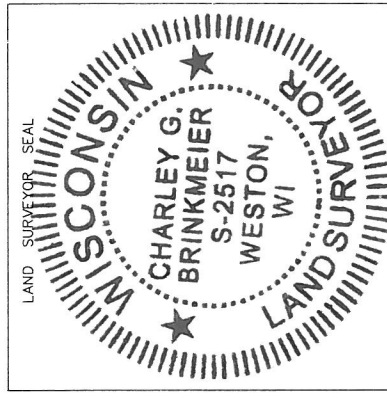


CHARLEY G. BRINKMEIER

(Type or print name) CERTIFY THAT THE CORNER LOCATION SHOWN ON THIS RECORD WAS DETERMINED BY ME OR UNDER MY DIRECTION AND CONTROL AND THAT THIS U.S. PUBLIC LAND SURVEY MONUMENT RECORD IS CORRECT AND COMPLETE TO THE BEST OF MY KNOWLEDGE AND BELIEF.

Charley G. Brinkmeier
 SIGNATURE

3-12-12
 DATE



P3 34-9 INDEX NO.