

# U.S. PUBLIC LAND SURVEY MONUMENT RECORD FOR LANGLADE COUNTY, WISCONSIN

Note: This form is intended and designed to fulfill all requirements of Wisconsin Administrative Code, Chapter A-E 5.02, U.S. Public Land Survey Monument Record (3) (a) (b) (c) (d) (e) (f) (g) (h) (i). Use additional sheet if necessary.

(a) The  section,  one quarter corner common to sections 18 & 19,

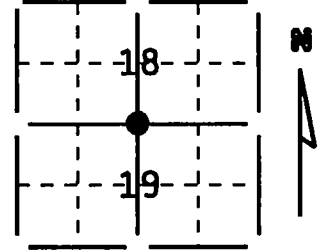
Township(s) 34 N, Range(s) 9 E

State plane coordinates: N \_\_\_\_\_

S \_\_\_\_\_

Town/City/Village Parrish

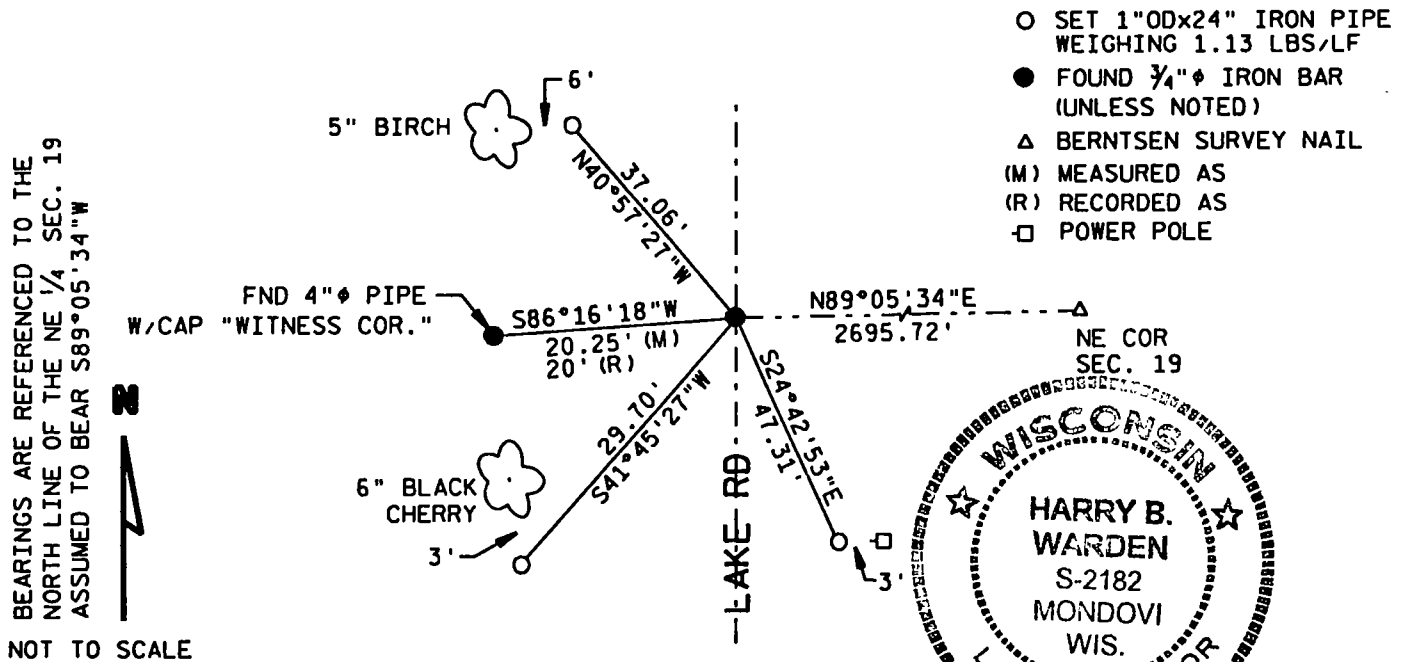
County Langlade



(b) (f) (g) (h) Description of monument found at this corner and if it was accepted, state all evidence (testimonial, occupational, plats, records, other monuments) used as a basis for accepting. If not accepted or nothing was found, state evidence used as a basis for establishing location and what was set. If reestablished through lost corner proportionate methods, indicate all monuments, distances and directions used.

Found  $\frac{3}{4}$ " bar 20.25' (20'-record) east of "Witness Corner"

(c) (d) (e) Plan view of corner with ties to a least 4 witness monuments. If in disagreement with previously established corner, show the distances between the two corners and also indicated ties to disputed corner.



(i) I certify that the corner location on this record was determined by me or under my direction and control and that this U.S. Public Land Survey Monument Record is correct and complete to the best of my knowledge and belief.

Harry B Warden  
Signature

December 13, 1995  
Date

INDEX # N/3

Filed for record in Langlade County Surveyor's Office on 12/18/95 D. Dierker  
Date

# U. S. PUBLIC LAND SURVEY MONUMENT RECORD

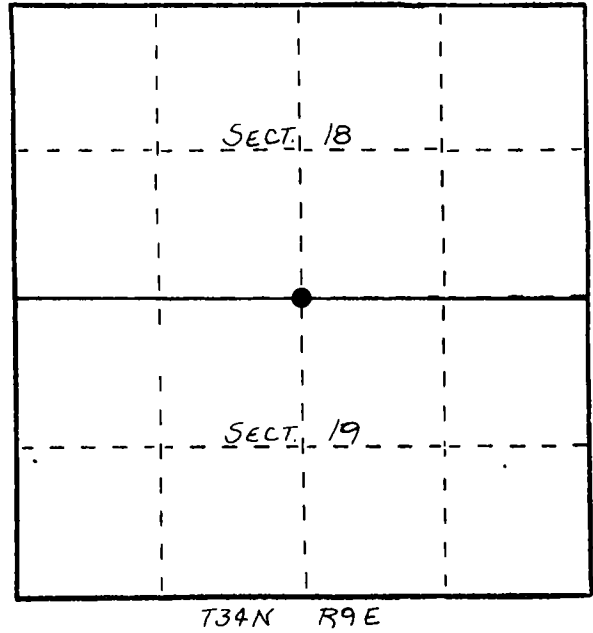
**INSTRUCTIONS:** This record shall show the location of the corner and shall include all of the following nine elements (a through i).

- (a) Identify the corner by reference to the U.S. public land survey system.

○ = Corner monument restored.

ORIGINAL CORNER ESTABLISHED BY  
JAMES NOWLIN, SEPT.-OCT, 1864.

CORNER RE-ESTABLISHED DURING  
1930'S C.C.C. RESURVEY



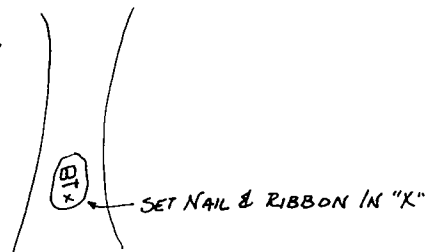
- (b) Describe any record evidence, monument evidence, occupational evidence, testimonial evidence or any other material evidence you considered, and whether the monument was found or placed.

FOUND IN PLACE: 4" BRASS CAP MONUMENT; WITNESS CORNER  
1" IRON BAR IN ROAD, SET R.R SPIKE OVER BAR - CORNER LOCATION

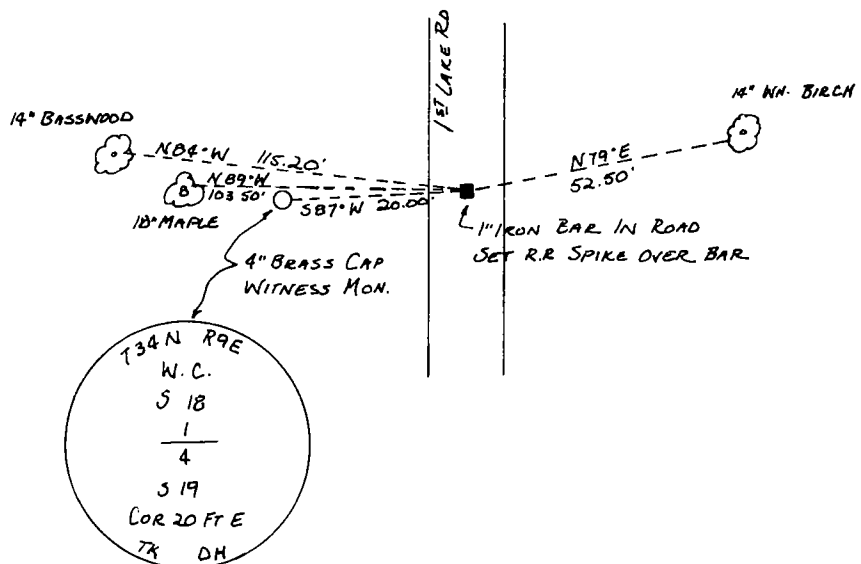
- (c) In the plan view drawing below, provide reference ties to at least 4 witness monuments, or, if the location is within a municipality, to at least 2 witness monuments. (Witness monuments shall be made of concrete, natural stone, iron or other equally durable material.) Describe witness monuments.

- (d) Show a plan view drawing depicting the relevant monuments and reference ties which is sufficient in detail to enable accurate relocation of the corner monument if the corner monument is disturbed. Indicate north.

ALL BT'S EXISTING:



NORTH



(e) Describe any material discrepancy between the location of the corner as restored or reestablished and the location of that corner as previously restored or reestablished by distance and direction. Show the discrepancy on the plan view drawing under (d), above. Show the distances between the corner as previously restored or reestablished and (1) the corner as restored or reestablished, and (2) to at least 2 of the witness monuments shown on the drawing in (d), above.

NONE.

(f) Was the corner restored through acceptance of (1) an obliterated evidence location, or, (2) a found perpetuated location?

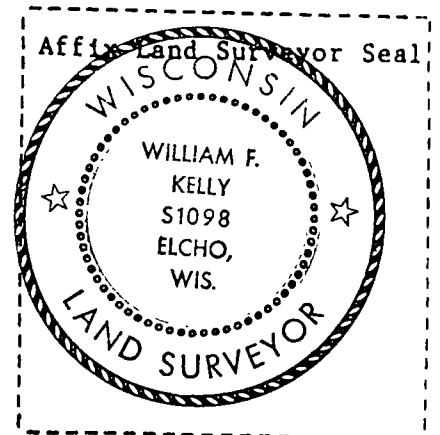
(2)

(g&h) Was the corner reestablished through lost corner proportionate methods? If so, show the method, including the directions and distances to other public land survey corners used as evidence or used for proportioning in determining the corner location?

No

(1) 1. WILLIAM F. KELLY  
(type or print name) certify that the corner location shown on this record was determined by me or under my direction and control and that this U.S. Public Land Survey Monument Record is correct and complete to the best of my knowledge and belief.

William F. Kelly                      11-28-84  
Signature    Date



CERTIFIED LAND CORNER RESTORATION

Index No. N-3

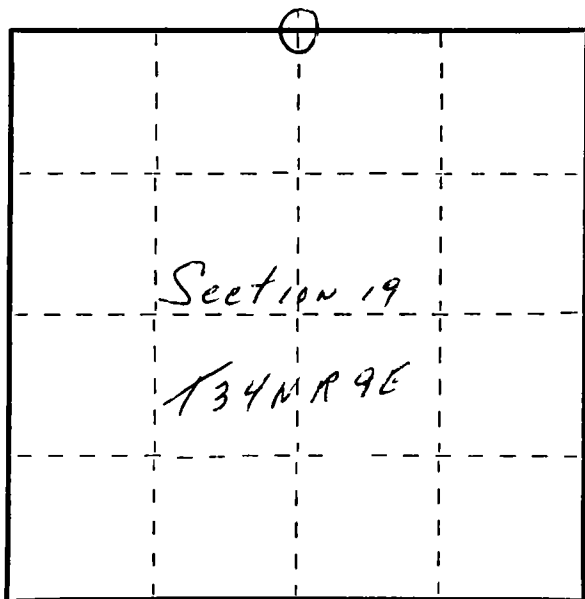
State of Wisconsin }  
County of Lan glade } ss.

I, Raymond J. Hally, do hereby certify that on the 4th day of December, 1982, I found evidence of the 1/4 corner of Section 18 & 19 Township 34, North, Range 9E, Fourth Principal Meridian, as described hereon; and that from this evidence I established a new monument and accessories as described hereon to perpetuate the original location of this corner.

Resident witnesses:

.....  
.....  
.....

FORM 985 R. C. MILLER CO., MILWAUKEE



○ = Corner monument restored.

History of original corner establishment:

Corner set in the 1930 resurvey.

Description of corner evidence found:

✂ 4" pipe with brass cap. Fence west



Description of monument and accessories I established to perpetuate the original location of this corner.

New BT's to witness corner.

14"	White Birch	N82E	72.2'
	Power pole	S47E	59.8'
14"	Twain Maple	N88W	83.2'
16"	Basswood	N83W	94.9'

Dated at Antigo, Wis., this 4th day of December, 1982

Signature Raymond J. Hally Title Land Surveyor Registration No. S-685  
(County Surveyor, Registered Land Surveyor, or other duly authorized official)

Office of Register of Deeds, County of....., I hereby certify that the within instrument was filed in this office for record on the.....day of....., 19..... at.....o'clock..... M.

.....  
(Register of Deeds)

By.....Deputy