

LANGLADE COUNTY U.S. PUBLIC LAND CORNER RESTORATION

The East Quarter corner of Section 17, T. 34 N., R. 9 E., Langlade County, WI.

Corner was: (check all that apply)

4340917 2000

- Restored through acceptance of an obliterated evidence location.
- Restored through acceptance of a found perpetuated location.
- Determined to be lost and re-established through proportionate methods.
 - Show bearings and distances to PLSS corners used for proportioning, and show original distances).
 - Restored/recovered/re-established in a location that differs from a previously established position.
- (Show difference in plan view below).
- Check here if additional information is shown on the reverse side of this form.

Describe record evidence, recovered physical evidence, occupational evidence, testimonial evidence and all other evidence considered in the recovery/restoration of the corner.

The original corner was established in 1864 by James Nowlin. Original bearing trees: hemlock, 6", N54W, 8 links an a spruce, 5", N79E, 13 links. In the 1936 resurvey of this township by Kilroe and Hintz, they described corner as "remains of org. Hem BT, also fence corner". In 1987, former surveyor Kelly found in place 4" brass cap monument at fence intersection. He added bearing trees as I show below. I accept the monument as found as the best evidence of a perpetuated location of the original corner.

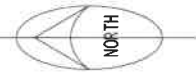
Physical description of the monument set:

I left the existing monument in place, as found.
Set a white vinyl sign post (painted blue) 0.8' north of monument.

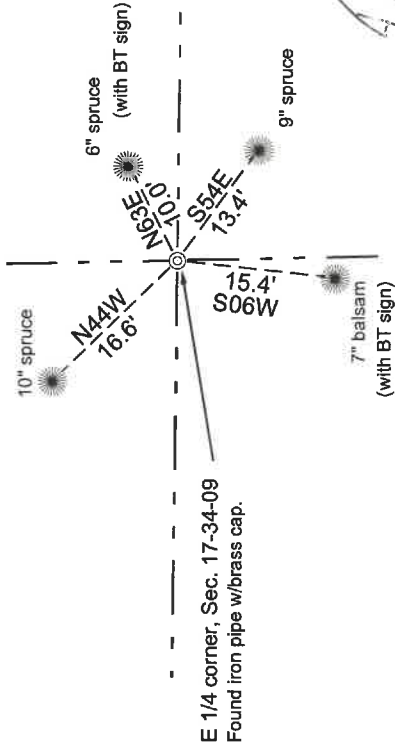
Describe the accessories used to perpetuate the corner. Include a plan view drawing and accessories found/set. Describe measuring point on bearing trees. Show any topographic features that would aid in future recovery of the corner.

Bearings magnetic with hand compass.
Trees are blazed and painted blue.

Field book 28-12

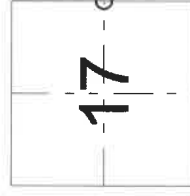


Langlade County coordinates NAD83(2011)
 Northing(Y) Easting(X) Description
 445987.12 561330.00 4INIPBCFND 3XRTKAVE:05172016



E 1/4 corner, Sec. 17-34-09
Found iron pipe w/brass cap.

Index No. L 9 34-09



O = corner perpetuated
 The East Quarter
 corner of Section 17,
 T. 34 N., R. 9 E.,
 Langlade County, WI

I, David E. Tlusty, Registered Land Surveyor, as Langlade County Surveyor, certify that the corner location on this record was determined by me and that this U.S. Public Land Survey Monument Record is correct to the best of my knowledge and belief.