

# LANGLADE COUNTY U.S. PUBLIC LAND CORNER RESTORATION

The East Quarter corner of Section 16, T. 34 N., R. 9 E., Langlade County, WI.

**Corner was: (check all that apply)**

4340916 2000

- Restored through acceptance of an obliterated evidence location.
- Restored through acceptance of a found perpetuated location.
- Determined to be lost and re-established through proportionate methods.  
     Show bearings and distances to PLSS corners used for proportioning, and show original distances).
- Restored/recovered/re-established in a location that differs from a previously established position.  
     (Show difference in plan view below).
- Check here if additional information is shown on the reverse side of this form.

**Describe record evidence, recovered physical evidence, occupational evidence, testimonial evidence and all other evidence considered in the recovery/restoration of the corner.**

The original corner was established in 1864 by James L. Nowlin. Original bearing trees: birch, 6", N20E, 10 links and a hemlock, 14", S50W, 7 links. In 1936, Kiroe & Hintz, in their resurvey of this township, said: "Set 1/4 cor. No B.T.". On June 21, 2016, D. Tlusty and Cody Brauner found a leaning 4" iron pipe with brass cap. We straightened the monument and made it solid by packing rocks around it. Top of monument is 1.3' above ground level. Accepted monument as found and marked bearing trees as described below.

**Physical description of the monument set:**

Existing monument as described above.

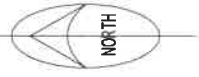
Set a white vinyl sign post one foot north of monument.

**Describe the accessories used to perpetuate the corner. Include a plan view drawing and accessories found/set. Describe measuring point on bearing trees. Show any topographic features that would aid in future recovery of the corner.**

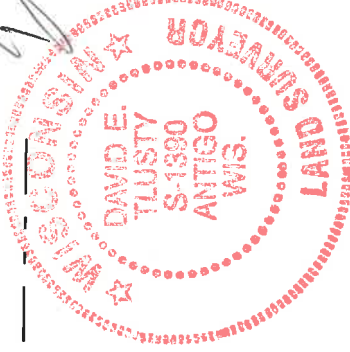
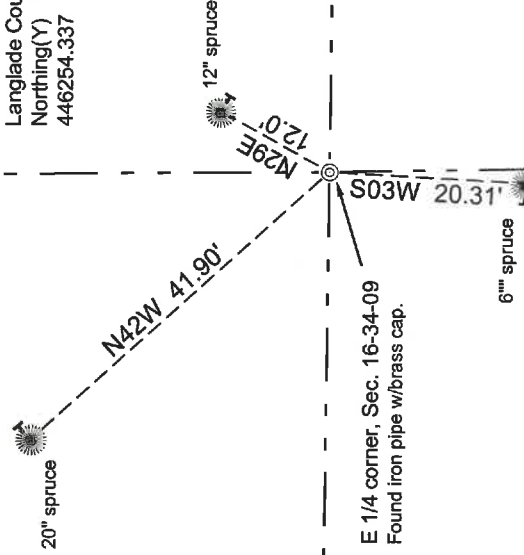
Bearings magnetic with hand compass.

Trees are blazed, painted blue and have "Bearing Tree" signs attached. Tree ties are measured to an aluminum nail in a low blaze on the side of the tree shown as:

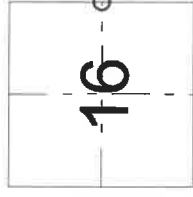
Field book 28-18



Langlade County Coordinates NAD83(2011)  
 Northing(Y) Easting(X) Elev(Z) Description  
 446254.337 566475.120 1613.09 BCMON FND4XR TK AVE:06212016



Index No.                      L13                      34-09



O = corner perpetuated  
 The East Quarter  
 corner of Section 16,  
 T. 34 N., R. 9 E.,  
 Langlade County, WI

I, David E. Tlusty, Registered Land Surveyor, as Langlade County Surveyor, certify that the corner location on this record was determined by me and that this U.S. Public Land Survey Monument Record is correct to the best of my knowledge and belief.