

CERTIFIED LAND CORNER RESTORATION

Index No. N-1

34-10

State of Wisconsin }
County of L. nglade } ss.

I, Raymond J. Hallisy, do hereby certify that on the 6th day of November, 1982, I found evidence of the Section corner of Section 13, 24, 18, & 19 Township 34, North, Range 9E & 10E, Fourth Principal Meridian, as described hereon; and that from this evidence I established a new monument and accessories as described hereon to perpetuate the original location of this corner.

History of original corner establishment:

Corner set in the 1930 resurvey.

Description of corner evidence found:

4" pipe with brass cap, 4" x 4" wood post SW scribed BT, 12.7'



Description of monument and accessories I established to perpetuate the original location of this corner.

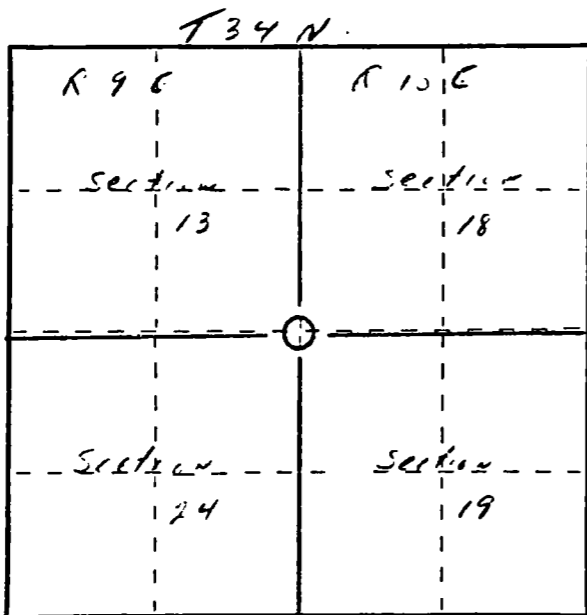
New BT's

8"	Clump Red Maple	S10W	17.8'
10"	Spruce	S50W	14.8'
12"	Spruce	S75W	4.2'

Resident witnesses:

.....
.....
.....

FORM 985 M. E. MILLER CO., MILWAUKEE



○ = Corner monument restored.

Dated at Antigo, Wis., this 6th day of November, 1982.

Signature Raymond J. Hallisy Title _____ Registration No. 5-685
(County Surveyor, Registered Land Surveyor, or other duly authorized official)

Office of Register of Deeds, County of _____, I hereby certify that the within instrument was filed in this office for record on the _____ day of _____, 19____ at _____ o'clock _____ M.

.....
(Register of Deeds)

By _____ Deputy