

# U.S. PUBLIC LAND SURVEY MONUMENT RECORD

(Prepared and as required by S. A-E 7.08 WI Administrative Code)

The SOUTH 1/4 corner of Section 12, T. 34 N., R. 9 E., Langlade County, WI  
 Corner was (check all that apply)

- Restored through acceptance of an obliterated evidence location.
- Restored through acceptance of a found perpetuated location.
- Determined to be lost and re-established through proportionate methods. (show bearings and distances to PLSS corners used for proportioning.)
- Restored/recovered/re-established in a location that differs from a previously established position. (Show difference in plan view below.)
- Check here if additional information is shown on the reverse side of this form.

**Describe record evidence, recovered physical evidence, occupational evidence, testimonial evidence, and all other evidence considered in the recovery/restoration of the corner.**

1864 - Original corner established by J.L. Nowlin - bearing trees: Spruce, 8", S35°W, 16 links; Cedar, 4", S25°E, 13 links.

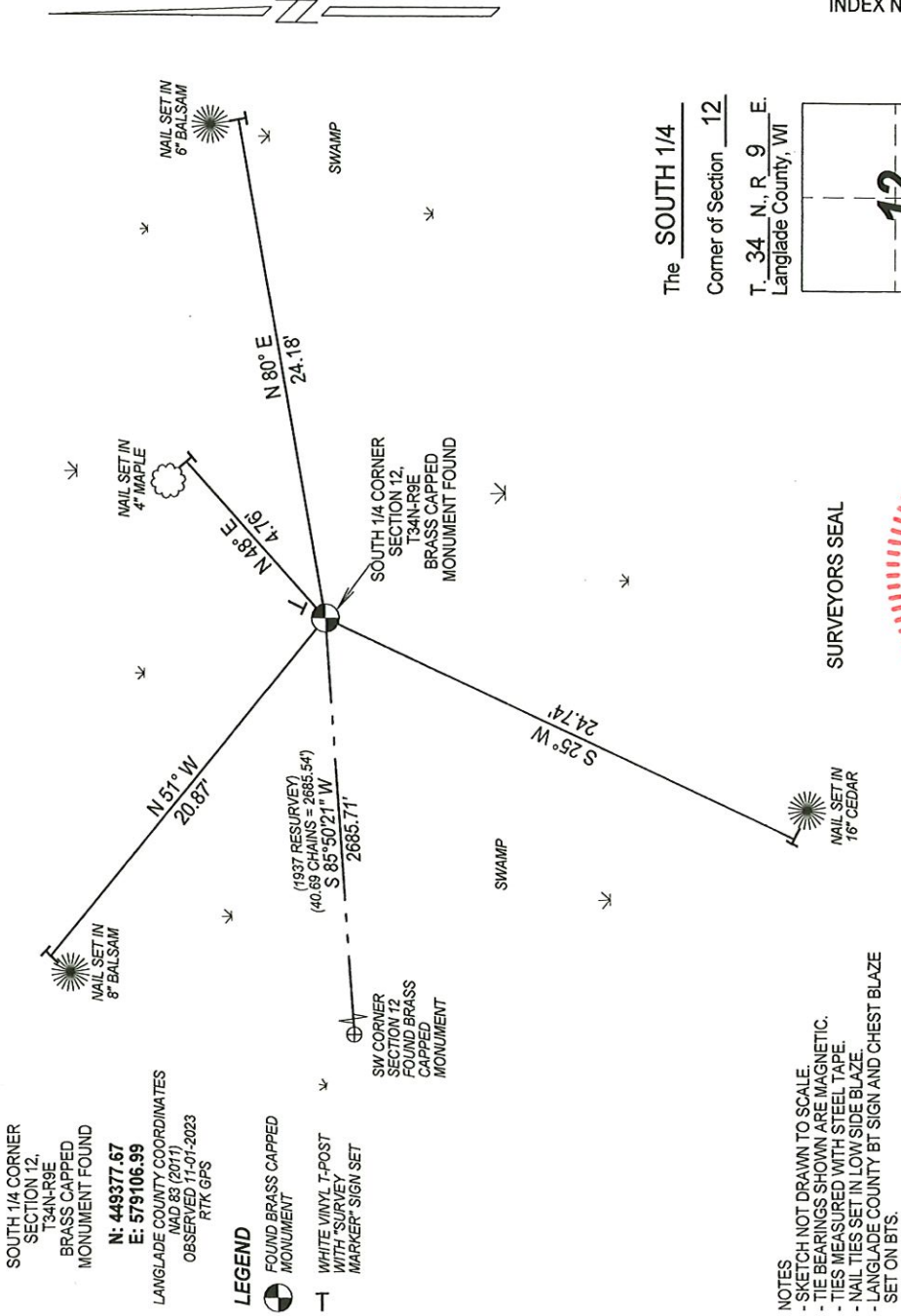
1937 - Resurvey of Township by T.H. Kilroe and D.A. Hintz "to 1/4 corner established by Brooke 1910 " They reference witness tree; Birch 12", S15°E, 32 1/2. They measure distances of 40.69 chains (2685.54') to the Southwest Corner of Section 12. They set a brass capped monument for this corner.

2023 - I found the brass capped monument set in 1937 resurvey leaning and in poor condition. I stood monument upright and reset in place. Found an existing squared wood post below surface, and next to monument. I verified location from distance of 1937 resurvey to the Southwest Corner of Section 12. I set new witness monuments and tied it out as shown below.

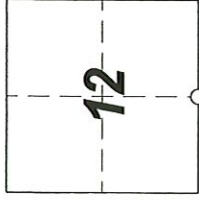
**Physical description of the monument set:**

Accepted brass capped monument as corner location and tied out as shown below.

Describe the accessories used to perpetuate the location of the corner. Include a plan view drawing and indicate accessories found/set. Describe measuring point on bearing trees. Show any topographic features that would aid in future recovery of the corner.



The SOUTH 1/4  
 Corner of Section 12  
 T. 34 N., R. 9 E.  
 Langlade County, WI



○ = Location of corner

SURVEYORS SEAL



- NOTES
- SKETCH NOT DRAWN TO SCALE.
  - TIE BEARINGS SHOWN ARE MAGNETIC.
  - TIES MEASURED WITH STEEL TAPE.
  - NAIL TIES SET IN LOW SIDE BLAZE.
  - LANGLADE COUNTY BT SIGN AND CHEST BLAZE SET ON BTS.

I, Michael J. Hoffman, certify that the corner location shown on this record was determined by me or under my direction and control and that this U.S. Public Land Survey Monument Record is correct and complete to the best of my knowledge and belief.

Michael J. Hoffman Signature      01/18/2024 Date