

# U.S. PUBLIC LAND SURVEY MONUMENT RECORD

(Prepared and as required by S. A-E 7.08 WI Administrative Code)

The SOUTHEAST corner of Section 11, T. 34 N., R. 9 E., Langlade County, WI  
 Corner was (check all that apply)

- Restored through acceptance of an obliterated evidence location.
- Restored through acceptance of a found perpetuated location.
- Determined to be lost and re-established through proportionate methods. (show bearings and distances to PLSS corners used for proportioning.)
- Restored/recovered/re-established in a location that differs from a previously established position. (Show difference in plan view below.)
- Check here if additional information is shown on the reverse side of this form.

**Describe record evidence, recovered physical evidence, occupational evidence, testimonial evidence, and all other evidence considered in the recovery/restoration of the corner.**

1864 - Original corner established by J.L. Nowlin - bearing trees: Birch, 24", N82°W, 16 links; Pine, 6", S67°W, 8 links; Sugar, 4", S84°E, 6 links and Elm, 14", N37°E, 30 links.

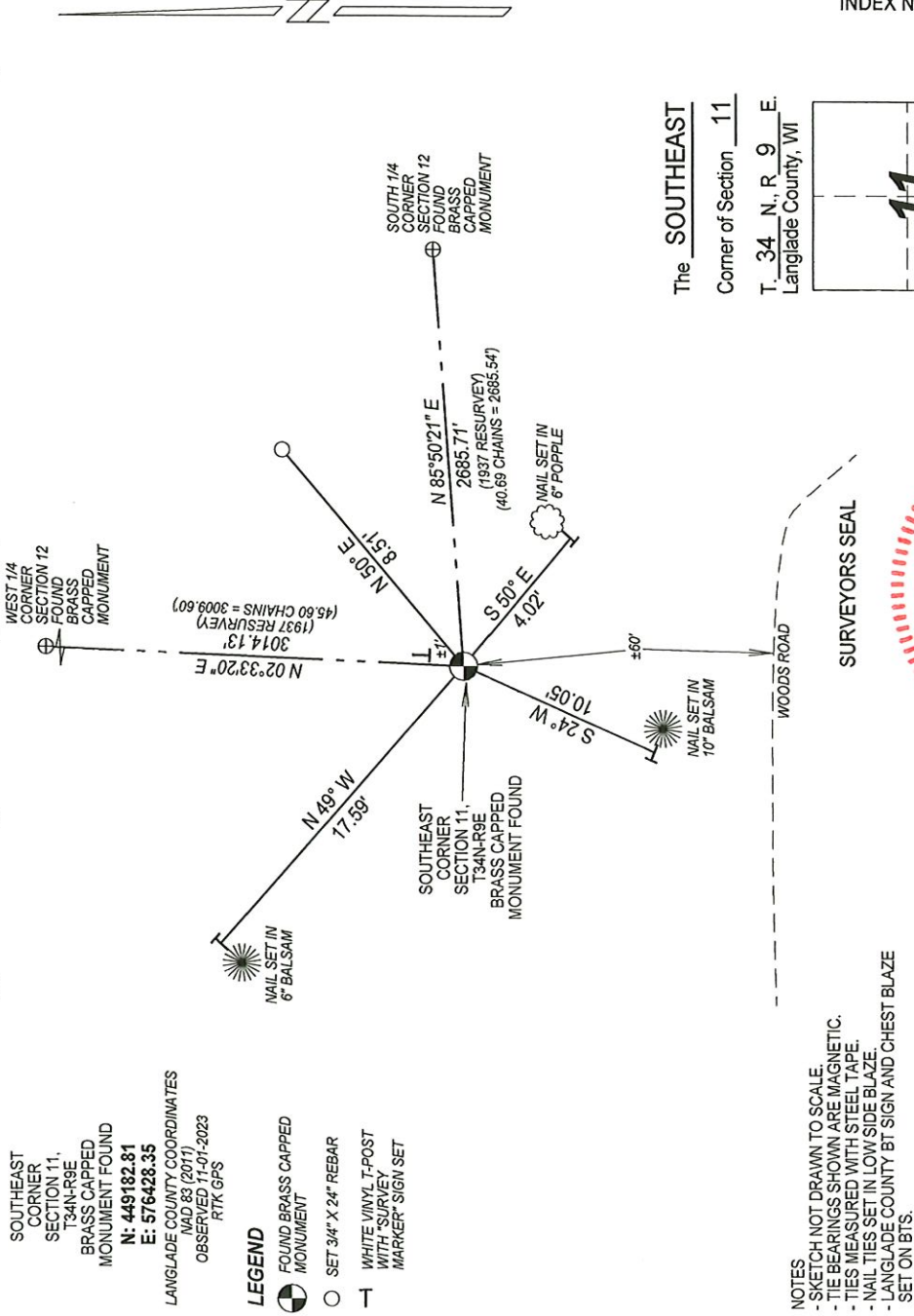
1937 - Resurvey of Township by T.H. Kilroe and D.A. Hintz measure distances of 40.69 chains (2685.54') to the South 1/4 Corner of Section 12 and 45.60 chains (3009.60') to the West 1/4 Corner of Section 12. They set a brass capped monument for this corner.

2023 - I found the brass capped monument set in 1937 resurvey in good condition. I verified location from distances of 1937 resurvey to the South 1/4 Corner and West 1/4 Corner of Section 12. I set new witness monuments and tied it out as shown below.

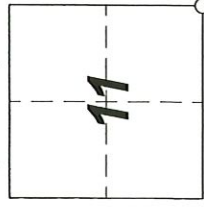
**Physical description of the monument set:**

Accepted brass capped monument as corner location and tied out as shown below.

Describe the accessories used to perpetuate the location of the corner. Include a plan view drawing and indicate accessories found/set. Describe measuring point on bearing trees. Show any topographic features that would aid in future recovery of the corner.



The SOUTHEAST  
 Corner of Section 11  
 T. 34 N., R. 9 E.  
 Langlade County, WI



I, Michael J. Hoffman, certify that the corner location shown on this record was determined by me or under my direction and control and that this U.S. Public Land Survey Monument Record is correct and complete to the best of my knowledge and belief.

Michael J. Hoffman Date 01/18/2024