

LANGLADE COUNTY U.S. PUBLIC LAND CORNER RESTORATION

The East Quarter corner of Section 9, T. 34 N., R. 9 E., Langlade County, WI.

Corner was: (check all that apply)

4340909 2000

- Restored through acceptance of an obliterated evidence location.
- Restored through acceptance of a found perpetuated location.
- Determined to be lost and re-established through proportionate methods.
 Show bearings and distances to PLSS corners used for proportioning, and show original distances).
- Restored/recovered/re-established in a location that differs from a previously established position.
 (Show difference in plan view below).
- Check here if additional information is shown on the reverse side of this form.

Describe record evidence, recovered physical evidence, occupational evidence, testimonial evidence and all other evidence considered in the recovery/restoration of the corner.

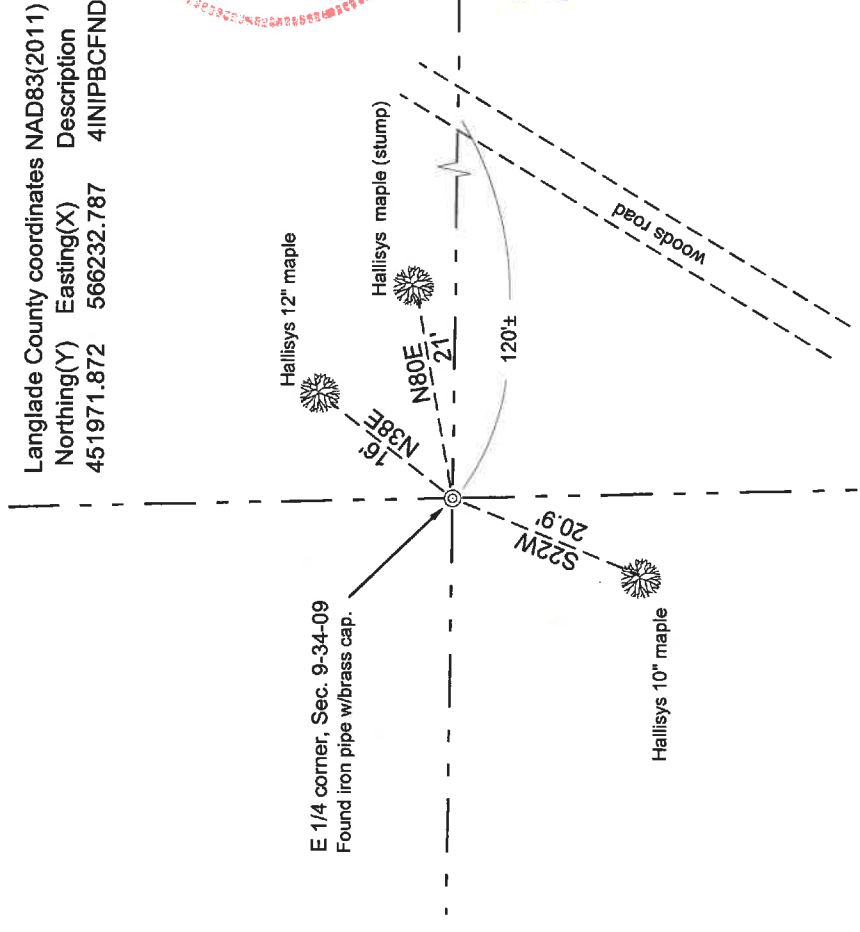
The original corner was established in 1864 by James Nowlin. Original bearing trees: ironwood, 8", S81W, 15 1/2 links and a spruce, 7", N62E, 17 links. In the 1936 resurvey of this township by Kilroe and Hintz, they stated: "to orig 1/4 cor. Org gone. Rest. birch, 28", N50E, 17 links and new maple, 6", S85W, 45.15. In 1980, Ray Hallisy found "4" pipe with brass cap low to ground". He marked three maple BT's: 12" @ N38E, 16'; a 12" @ N80E, 21' and a 10" @ S22W, 20'11". On May 18, 2016, I found 4" ip with brass cap, top of which is 0.4' above ground and in good condition.. Found Hallisy's maples green at N38E and S22W; his other maple is a rotting stump. I accept the monument as found as the quarter corner and perpetuate the location as shown below.

Physical description of the monument set:

- I left the existing monument in place, as found.
- Set a white vinyl sign post (painted blue) 0.4' south of monument.

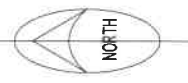
Describe the accessories used to perpetuate the corner. Include a plan view drawing and accessories found/set. Describe measuring point on bearing trees. Show any topographic features that would aid in future recovery of the corner.

Bearings magnetic with hand compass.
Trees are blazed and painted blue.



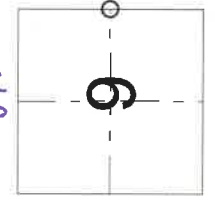
Langlade County coordinates NAD83(2011)
 Northing(Y) Easting(X) Description
 451971.872 566232.787 4INIPBCFND3XRTKAVE:05182016

Field book 28-16



David E. Tlusty
 8/30/19

Index No. G13 34-09



O = corner perpetuated
 The East Quarter
 corner of Section 9,
 T. 34 N., R. 9 E.,
 Langlade County, WI

I, David E. Tlusty, Registered Land Surveyor, as Langlade County Surveyor, certify that the corner location on this record was determined by me and that this U.S. Public Land Survey Monument Record is correct to the best of my knowledge and belief.