

CERTIFIED LAND CORNER RESTORATION

Index No. J-11

State of Wisconsin }
County of Lanola } ss.

I Raymond J. Hallisy, do hereby certify that on the 12th day of October, 1980, I found evidence of the 1/4 Corner corner of Section 9 & 16 Township 34, North, Range 9E, Fourth Principal Meridian, as described hereon; and that from this evidence I established a new monument and accessories as described hereon to perpetuate the original location of this corner.

Resident witnesses:

.....
.....
.....

History of original corner establishment:

Corner reset in the 1930 resurvey.

Description of corner evidence found:

4" pipe with brass cap.

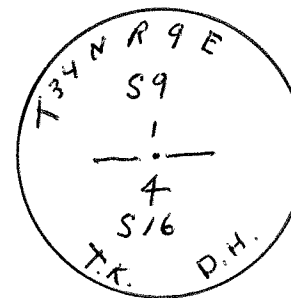
Old BT's

Tamarack Stump 18" S52 1/2 E 40.5 Links
Yellow Birch 2 1/4" N27W 47.01 Links

Description of monument and accessories I established to perpetuate the original location of this corner.

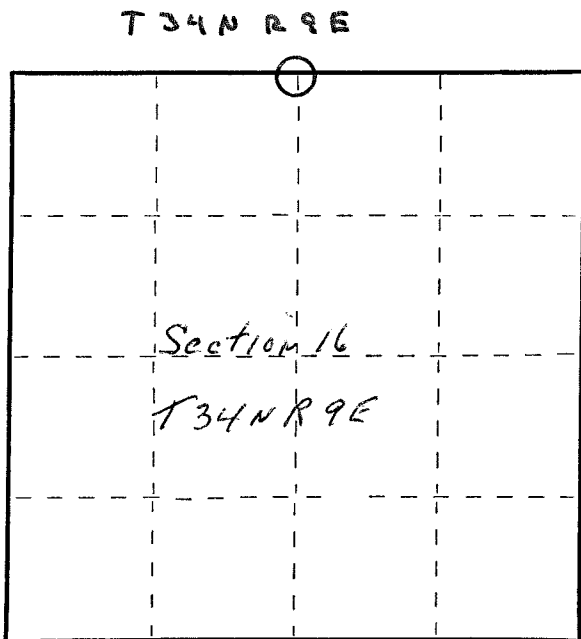
New BT's

10" tamarack S48E 14' 7"
8" Spruce N68E 16' 7"
6" Red Maple N32W 18' 9"



FORM 985 H. C. MILLER CO., MILWAUKEE

4340909 0020 1980



○ = Corner monument restored.

Dated at Antigo, Wis., this 12th day of October, 1980

Signature Raymond J. Hallisy Title Reg. Surveyor Registration No. S-685
(County Surveyor, Registered Land Surveyor, or other duly authorized official)

Office of Register of Deeds, County of Antigo, I hereby certify that the within instrument was filed in this office for record on the 12th day of October, 1980 at 12 o'clock PM.

.....
(Register of Deeds)

By.....Deputy