

CERTIFIED LAND CORNER RESTORATION

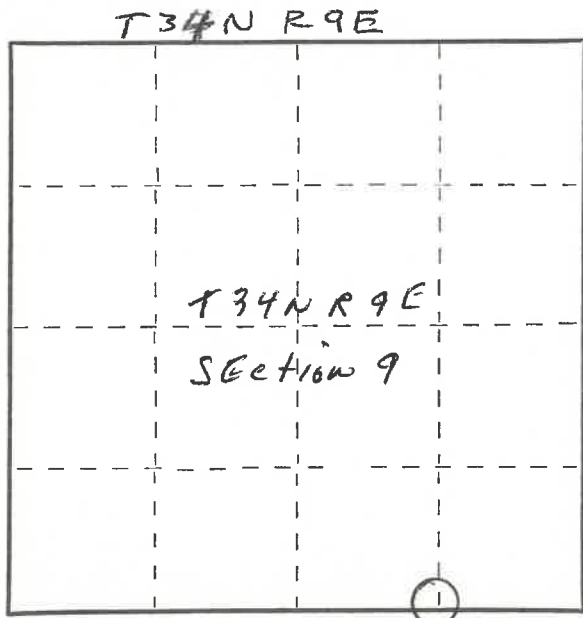
Index No. J-12

State of Wisconsin }  
County of Lanlade } ss.

I Raymond J. Hallisy, do hereby certify that on the 7th day of May, 1977, I found evidence of the E 1/16 corner of Section 9 & 16 Township 34, North, Range 9E, Fourth Principal Meridian, as described hereon; and that from this evidence I established a new monument and accessories as described hereon to perpetuate the original location of this corner.

Resident witnesses:

.....  
.....  
.....



○ = Corner monument restored.

History of original corner establishment:

Corner Set in the 1930 resurvey.

Description of corner evidence found:

Found old wood post standing, marked 1/8S

Description of monument and accessories I established to perpetuate the original location of this corner.

Set  $1\frac{1}{2}$ " pipe with brass cap.

New BT's

- 8" Hard Maple S65W 3.5Ft.
- 8" Hard Maple S65E 9.6Ft.



Dated at Antigo, Wis., this 7th day of May, 1977.

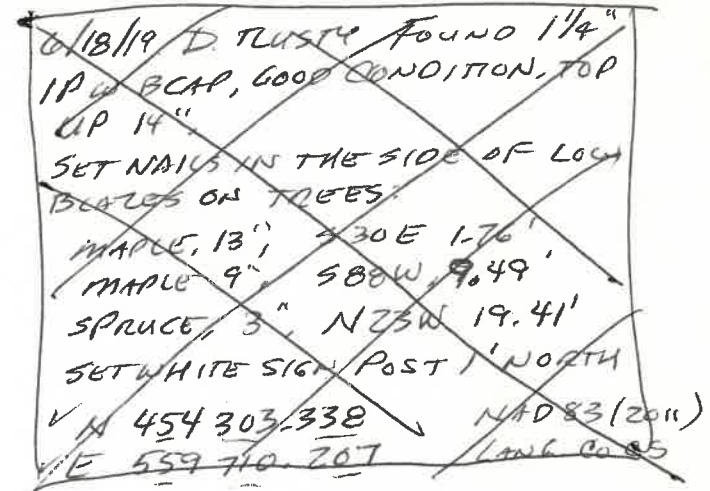
Signature Raymond J. Hallisy Title Land Surveyor Registration No. S685

(County Surveyor, Registered Land Surveyor, or other duly authorized official)

Office of Register of Deeds, County of \_\_\_\_\_, I hereby certify that the within instrument was filed in this office for record on the \_\_\_\_\_ day of \_\_\_\_\_, 19\_\_\_\_ at \_\_\_\_\_ o'clock \_\_\_\_\_ M.

(Register of Deeds)

By \_\_\_\_\_ Deputy



43409090010 1977  
FORM 985 H. C. MILLER CO., MILWAUKEE