

+
**LANGLADE COUNTY
 U.S. PUBLIC LAND CORNER RESTORATION**

The Southeast corner of Section 9, T. 34 N., R. 9 E., Langlade County, WI.

Corner was: (check all that apply)

4340909 0000

- Restored through acceptance of an obliterated evidence location.
- Restored through acceptance of a found perpetuated location.
- Determined to be lost and re-established through proportionate methods.
 (Show bearings and distances to PLSS corners used for proportioning, and show original distances).
- Restored/recovered/re-established in a location that differs from a previously established position.
 (Show difference in plan view below).
- Check here if additional information is shown on the reverse side of this form.

Describe record evidence, recovered physical evidence, occupational evidence, testimonial evidence and all other evidence considered in the recovery/restoration of the corner.

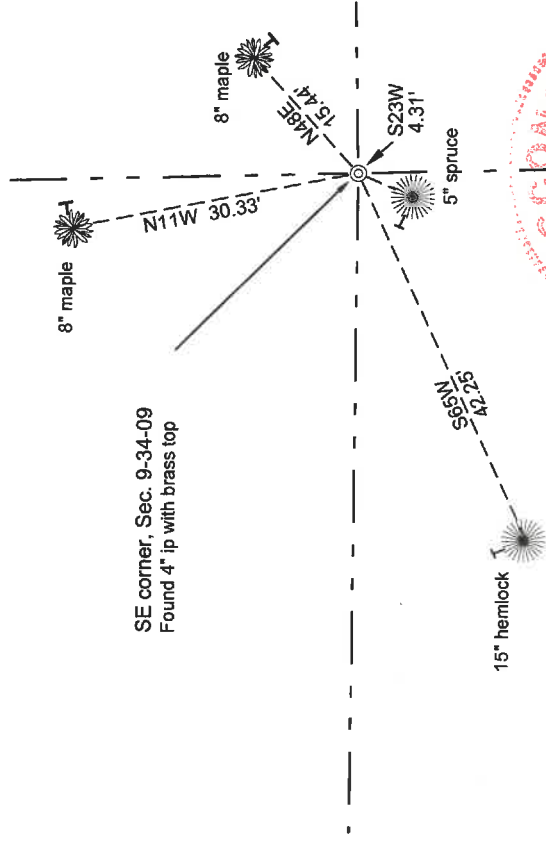
The original corner was established by James L. Nowlin in 1864. Original bearing trees: tamarac, 18", N 34 1/2 E, 25 links, pine, 12", S50E, 18 links; pine, 10", S20W, 26 links and a tamarac, 16", N13 1/2W, 15 links. In the 1930's resurvey of this township, Hintz and Kewalko noted "to orig. sec cor." and found the two original pine BT's. They set a new BT, a birch, 18", SE but didn't note the bearing or distance to it. On May 18, 2016 I found a 4" iron pipe with brass tablet, top of monument up 5" and leaning to the East. I straightened the existing monument and found the original pine stump, S20W, 16.0 feet. I accept the found monument as the best evidence of the original corner location and marked new bearing trees for it as shown and described below.

** KILROE*

Physical description of the monument set:

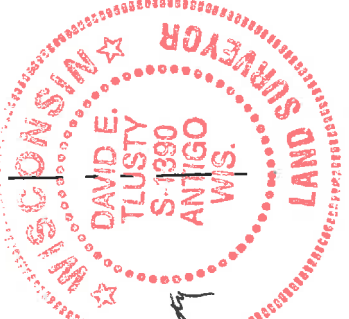
I left the existing monument in place.
 Set a 6" white vinyl sign posts, 1.0' north of the corner monument.

Describe the accessories used to perpetuate the corner. Include a plan view drawing and accessories found/set. Describe measuring point on bearing trees. Show any topographic features that would aid in future recovery of the corner.



SE corner, Sec. 9-34-09
 Found 4" ip with brass top

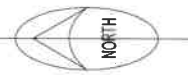
Langlade County Coordinate system values
 Datum: NAD83(2011)
 N 449116.96
 E 566392.99



David E. Tlusty
 9/8/19

I, David E. Tlusty, Registered Land Surveyor, as Langlade County Surveyor, certify that the corner location on this record was determined by me and that this U.S. Public Land Survey Monument Record is correct to the best of my knowledge and belief.

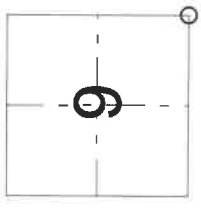
Field book 28-14



LEGEND

- Tie bearings magnetic with hand compass.
- BT's measured to aluminum nail in a low blaze on the side of the trees shown: >
- Trees are painted blue and have "Bearing Tree" signs attached.

Index No. J 13 34-09



O = corner perpetuated
 The Southeast corner of Section 9,
 T. 34 N., R. 9 E.,
 Langlade County, WI

+