

LANGLADE COUNTY U.S. PUBLIC LAND CORNER RESTORATION

The East 1/4 corner of Section 7, T. 34 N., R. 9 E., Langlade County, WI.

Corner was: (check all that apply)

- Restored through acceptance of an obliterated evidence location.
- Restored through acceptance of a found perpetuated location.
- Determined to be lost and re-established through proportionate methods.
- Show bearings and distances to PLSS corners used for proportioning, and show original distances).
- Restored/recovered/re-established in a location that differs from a previously established position.
- (Show difference in plan view below).
- Check here if additional information is shown on the reverse side of this form.

4340907 2000

Describe record evidence, recovered physical evidence, occupational evidence, testimonial evidence and all other evidence considered in the recovery/restoration of the corner.

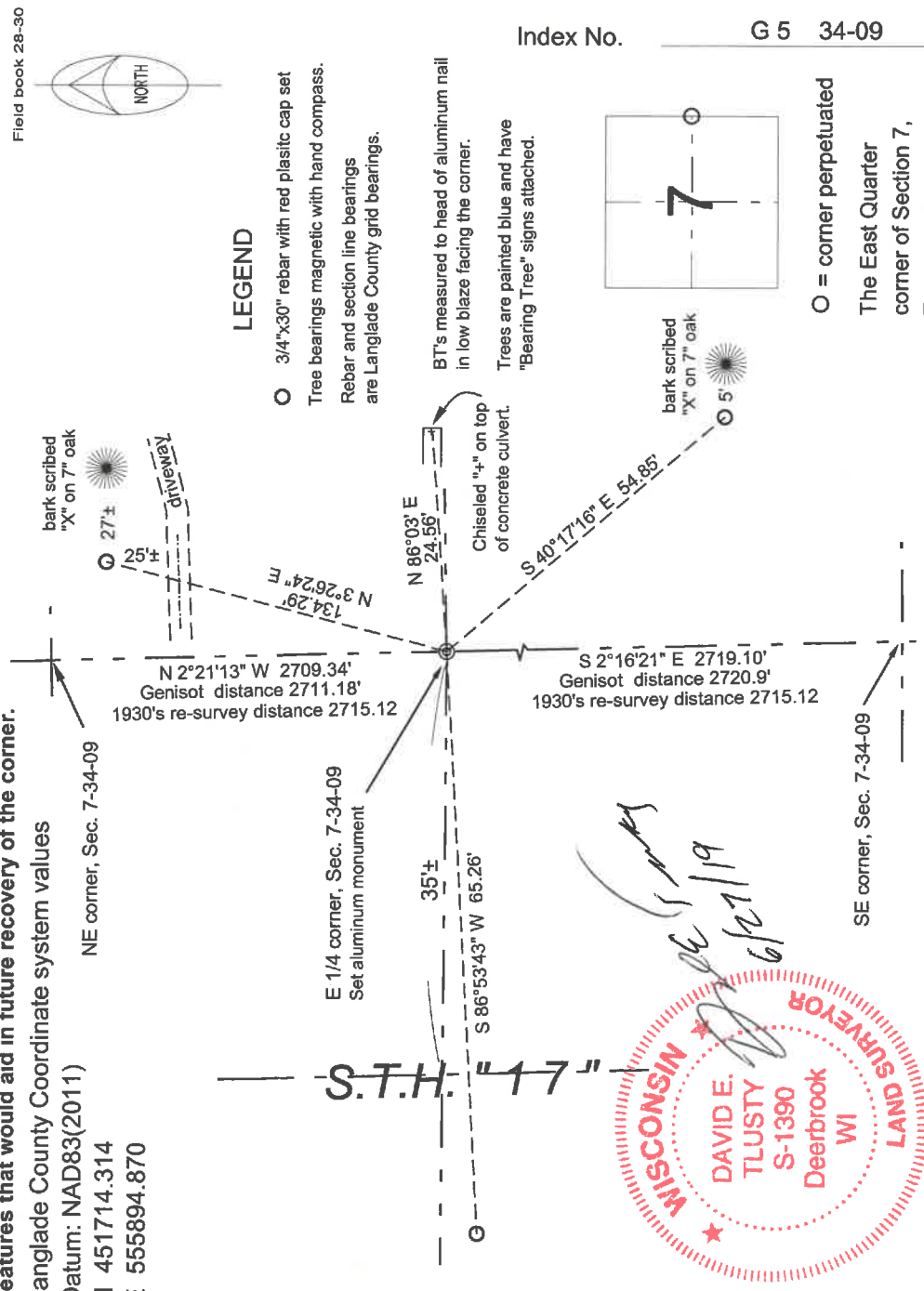
The original corner was established in 1864 by James L. Nowlin. Original bearing trees: ironwood, 8", N85W, 20 lks., and an ironwood, 7", S77E, 7 links. In the 1930's re-survey work by Darwin Hintz, the corner was set by proportionate measurement. He set 1/4 cor. iron peg 3/4" x 24" WC west side of road just south of cement bridge in fill. A 1964 corner record by the State Highway commission states: 1/4 cor. set by previous surveys. Reset after A 1959 map of survey in Section 8, by Genisot Engineering Co., shows corner as "Wit. cor. Brass cap set 30' west of 1/4 cor. in roadway." A 1964 corner record by the State Highway commission states: 1/4 cor. set by previous surveys. Reset after construction with concrete post with brass cap marked 718. 04/25/18 D. Tlusty searched proportionate position (based on Genisot) data. Found nothing but note that the bridge mentioned by Hintz has been replaced with a concrete culvert. That would have destroyed any evidence of the markers mentioned by Hintz. I re-established the corner at a proportionate positions using the Genisot map data as a basis for proportioning. Set the monument and ties as described below. The corner falls just south of a concrete culvert under Hwy. 17.

Physical description of the monument set:

To mark the corner, I set a 1" OD x 26" long aluminum pipe with barbed bottom and a 1 1/2" dia. alum. cap (with magnet) onto which I stamped "1/4 2019 S1390". Set Bernitsen magnet at the base of the aluminum pipe. Set white vinyl sign post 1.0' east of corner monument.

Describe the accessories used to perpetuate the corner. Include a plan view drawing and accessories found/set. Describe measuring point on bearing trees. Show any topographic features that would aid in future recovery of the corner.

Langlade County Coordinate system values
Datum: NAD83(2011)
N 451714.314
E 555894.870



I, David E. Tlusty, Registered Land Surveyor, as Langlade County Surveyor, certify that the corner location on this record was determined by me and that this U.S. Public Land Survey Monument Record is correct to the best of my knowledge and belief.

The East Quarter
corner of Section 7,
T. 34 N., R. 9 E.,
Langlade County, WI

Index No. G 5 34-09