

LANGLADE COUNTY U.S. PUBLIC LAND CORNER RESTORATION

The South Quarter corner of Section 5, T. 34 N., R. 9 E., Langlade County, WI.

Corner was: (check all that apply)

- Restored through acceptance of an obliterated evidence location.
- Restored through acceptance of a found perpetuated location.
- Determined to be lost and re-established through proportionate methods.
- Show bearings and distances to PLSS corners used for proportioning, and show original distances).
- Restored/recovered/re-established in a location that differs from a previously established position.
- (Show difference in plan view below).
- Check here if additional information is shown on the reverse side of this form.

4340905 0020

Describe record evidence, recovered physical evidence, occupational evidence, testimonial evidence and all other evidence considered in the recovery/restoration of the corner.

The original corner was established in 1864 by James L. Nowlin. Original bearing trees: fir, 8", S32W, 8 links and a sugar, 10", N24E, 11 links. In the 1936 resurvey in this township by Kilroe and Hintz, they set this corner by single proportionate measure between section corners. For bearing trees they had: pine stump, N45E, 39.24 lks and a maple, 12", S07W, 83 links. On Sept. 27, 2018, D. Tlusty and Luke Williams found a 4" concrete filled iron pipe with brass cap on top, solidly planted in the ground and top out of ground 8". Found rotted pine stump NE, 29 feet. Accepted monument as found as the corner set in the 1936 resurvey and perpetuated the location as shown below.

Physical description of the monument set:

- I left the existing 4" brass capped monument in place.
- I set a bare, green steel channel post 1 ft. south of the corner monument.
- The corner is 3' SE of 2 -13" basswoods, painted blue.

Describe the accessories used to perpetuate the corner. Include a plan view drawing and accessories found/set. Describe measuring point on bearing trees. Show any topographic features that would aid in future recovery of the corner.

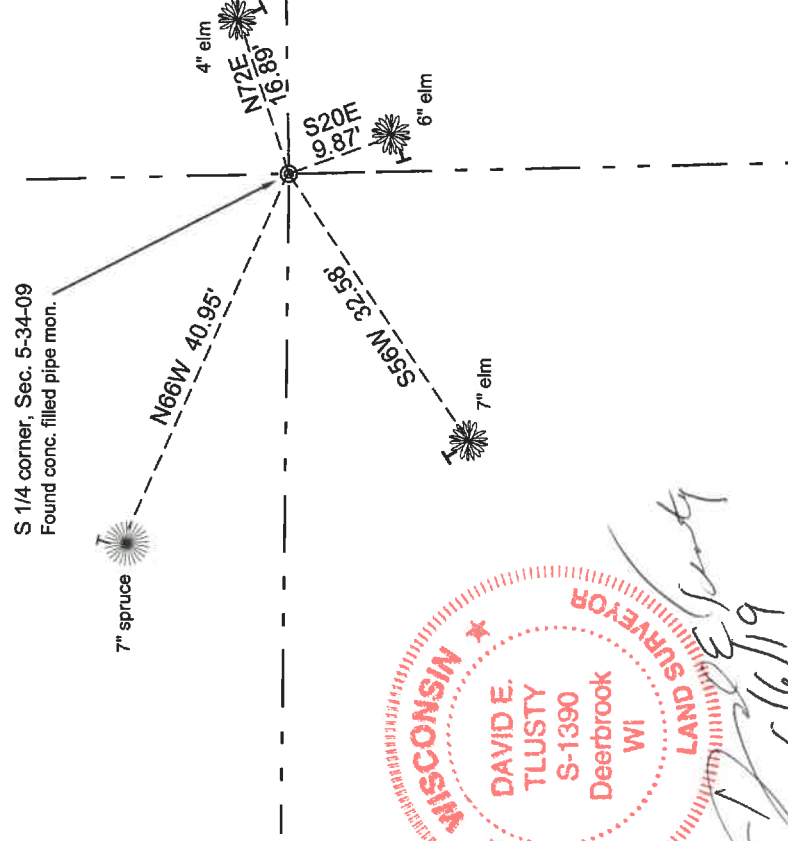
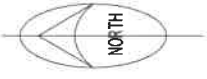
Langlade County Coordinate system values

Datum: NAD83(2011)

N 454342.94

E 558407.00

Field book 28--32



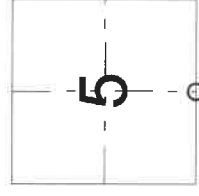
LEGEND

Tree bearings magnetic with hand compass.
Rebar and section line bearings are Langlade County grid bearings.

BT's measured to head of aluminum nail in low side blaze shown thus.

Trees are painted blue and have "Bearing Tree" signs attached.

Index No. E 7 34-09



O = corner perpetuated
The South Quarter
corner of Section 5,
T. 34 N., R. 9 E.,
Langlade County, WI

I, David E. Tlusty, Registered Land Surveyor, as Langlade County Surveyor, certify that the corner location on this record was determined by me and that this U.S. Public Land Survey Monument Record is correct to the best of my knowledge and belief.