

CERTIFIED LAND CORNER RESTORATION

Index No. E-8

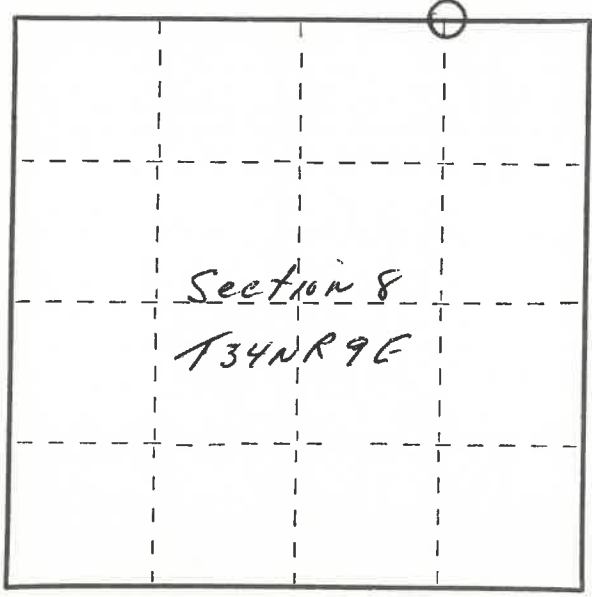
4340905 0010 2019

FORM 985 H. G. MILLER CO., MILWAUKEE

State of Wisconsin }
County of Lanclade } ss.

I, Raymond J. Hallisy, do hereby certify that on the 2nd day of May, 1981, I found evidence of the E 1/8 corner of Section 5 & 8 Township 34, North, Range 9E, Fourth Principal Meridian, as described hereon; and that from this evidence I established a new monument and accessories as described hereon to perpetuate the original location of this corner.

Resident witnesses:



○ = Corner monument restored.

History of original corner establishment:

Corner set in the 1930 resurvey.

Description of corner evidence found:

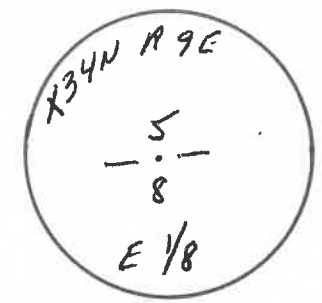
Found ~~XX~~ squared wood post down, point intact, marks plain.

06/18/19 D. Tlusty found 1 1/4" iron pipe with brass cap in good condition, solid in ground, top is 14" above ground. Hallisy's two maple BT's overgrown. I marked new BT's described below; set an aluminum nail in low side blaze for measurement. Maple, 13", S30E, 1.76'; Maple, 9", S88W, 9.49'; Spruce, 3", N23W, 19.41'. Set white sign post 1' north of corner monument. NAD83(2011) LCCS: N 454303.338 E 559710.207
D. Tlusty
7/10/19

Description of monument and accessories I established to perpetuate the original location of this corner.

Set 1 1/2" iron pipe with brass cap.

New BT's			
8"	Hard Maple	S40E	1'4"
8"	Hard Maple	S75W	9'8"
7"	Hard Maple	N45E	10'7"



Dated at Antigo, Wis., this 2nd day of May, 1981

Signature Raymond J. Hallisy Title Reg. Land Surveyor Registration No. S-685
(County Surveyor, Registered Land Surveyor, or other duly authorized official)

Office of Register of Deeds, County of Lanclade, I hereby certify that the within instrument was filed in this office for record on the _____ day of _____, 19____ at _____ o'clock _____ M.

(Register of Deeds)

By _____ Deputy