

LANGLADE COUNTY U.S. PUBLIC LAND CORNER RESTORATION

The Southeast corner of Section 5, T. 34 N., R. 9 E., Langlade County, WI.

Corner was: (check all that apply)

- Restored through acceptance of an obliterated evidence location.
- Restored through acceptance of a found perpetuated location.
- Determined to be lost and re-established through proportionate methods.
 - Show bearings and distances to PLSS corners used for proportioning, and show original distances).
 - Restored/recovered/re-established in a location that differs from a previously established position.
- (Show difference in plan view below).
- Check here if additional information is shown on the reverse side of this form.

4340905 0000

Describe record evidence, recovered physical evidence, occupational evidence, testimonial evidence and all other evidence considered in the recovery/restoration of the corner.

The original corner was established in 1864 by James L. Nowlin. Original bearing trees: tam, 5", S16E, 5 links and a tam, 6", S21W, 90 links. In the 1936 resurvey of this township, Kilroe and Hintz said: "to org. sec. cor. Orig tam stub 5, S20E, 5 lks; org. tam stub, 6, S30W, 64.24 feet. New w pine 5", S30W, 88.48 lks " In 1981, Ray Hallisy found the 1936 monument (4" brass cap) buried in bog - 1" iron pipe beside brass cap. He set a 3" brass cap witness corner "next to buried 4" B.C." and marked two BT's: 5" blk. spruce, S50E, 29.10 feet and a 6" tamarack, S0E, 48.90 feet. On June 10, 2019 with Gary Payne, we found the 4" brass capped corner monument in good condition, top is 0.1' above water level in swamp. Found and re-marked Hallisys tamarack BT as shown below. I accept the 4" brass capped monument as the best evidence of a perpetuated location of the original corner monument.

Physical description of the monument set:

- I left the existing 4" brass capped monument in place.
- I set a white vinyl sign post 0.6' south of corner monument and marked bearing trees as shown below.

Describe the accessories used to perpetuate the corner. Include a plan view drawing and accessories found/set. Describe measuring point on bearing trees. Show any topographic features that would aid in future recovery of the corner.

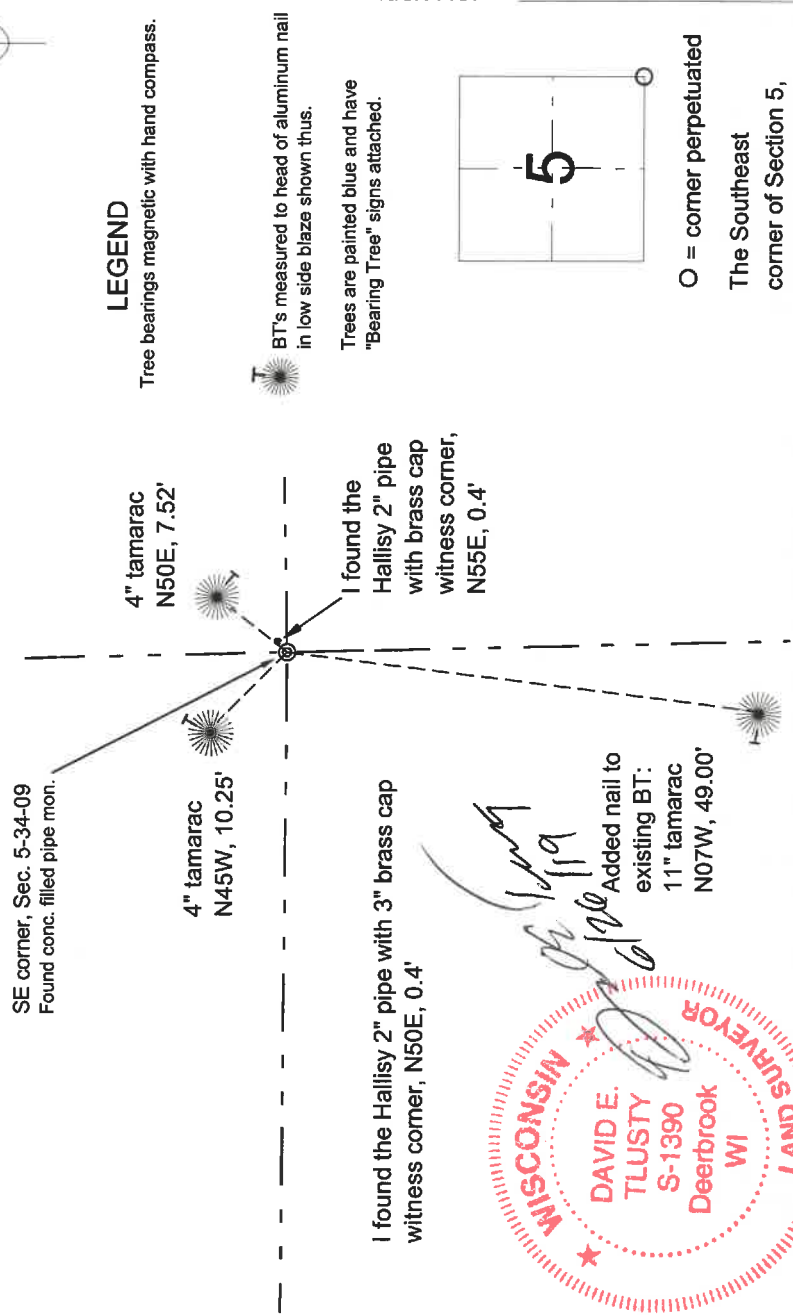
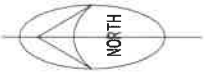
Langlade County Coordinate system values

Datum: NAD83(2011)

N 454264.095

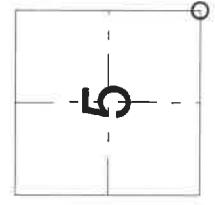
E 561014.421

Field book 28-38



I, David E. Tlusty, Registered Land Surveyor, as Langlade County Surveyor, certify that the corner location on this record was determined by me and that this U.S. Public Land Survey Monument Record is correct to the best of my knowledge and belief.

Index No. E 9 34-09



O = corner perpetuated
The Southeast
corner of Section 5,
T. 34 N., R. 9 E.,
Langlade County, WI