

CERTIFIED LAND CORNER RESTORATION

Index No. E 9

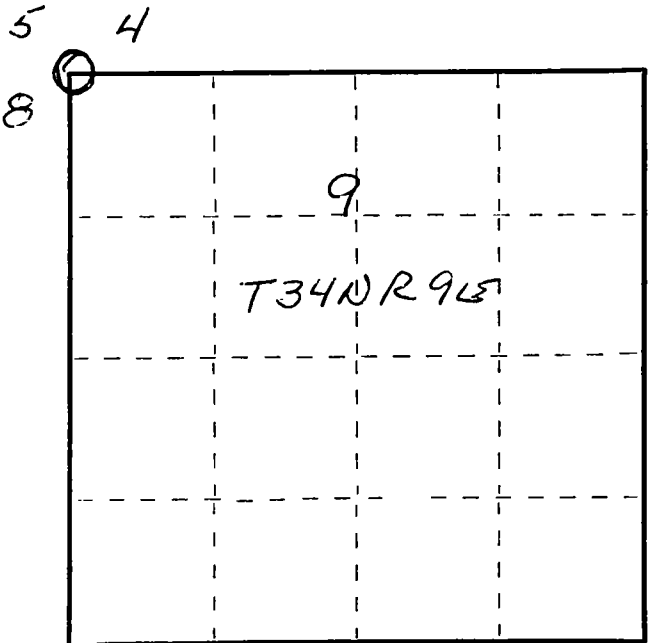
State of Wisconsin }  
County of LANGHADE } ss.

I RAYMOND J. HALLS, do hereby certify that on the 9 day of MAY, 1981, I found evidence of the N.W. SECTION 9 corner of SECTION 9 Township 34N, North, Range 9E, Fourth Principal Meridian, as described hereon; and that from this evidence I established a new monument and accessories as described hereon to perpetuate the original location of this corner.

Resident witnesses:

.....  
.....  
.....

FORM 985 H. C. MILLER CO., MILWAUKEE



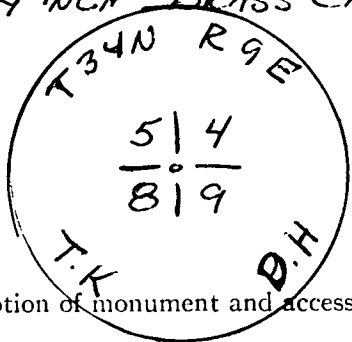
○ = Corner monument restored.

History of original corner establishment:

1930<sup>3</sup> COUNTY RESURVEY PROJECT

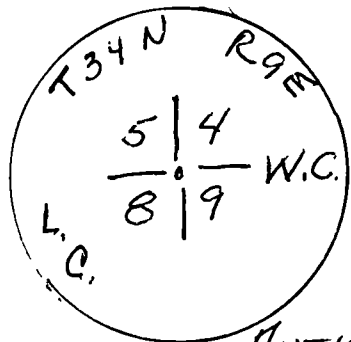
Description of corner evidence found:

4 INCH BRASS CAP - BURIED IN BOG - 1" IRON PIPE BESIDE BRASS CAP  
OLD B. TREE  
5" W. PINE 513E 88.45 LINKS



Description of monument and accessories I established to perpetuate the original location of this corner.

3" BRASS CAP WITNESS CORNER SET NEXT TO BURIED 4" B.C  
5" BLACK SPRUCE 550°E 29.10 FEET  
6" TAMARACK 50°E 48.90 FEET



Dated at ANTIGO, Wis., this 9 day of MAY, 1981.

Signature Raymond J. Halls Title Reg. Land Surveyor Registration No. 5-685  
(County Surveyor, Registered Land Surveyor, or other duly authorized official)

Office of Register of Deeds, County of....., I hereby certify that the within instrument was filed in this office for record on the..... day of....., 19..... at..... o'clock..... M.

.....  
(Register of Deeds)

By..... Deputy