

# U.S. PUBLIC LAND SURVEY MONUMENT RECORD

(Prepared and as required by S. A-E 7.08 WI Administrative Code)

The SOUTHEAST corner of Section 1, T. 34 N., R. 9 E., Langlade County, WI  
 Corner was (check all that apply)

- Restored through acceptance of an obliterated evidence location.
- Restored through acceptance of a found perpetuated location.
- Determined to be lost and re-established through proportionate methods. (show bearings and distances to PLSS corners used for proportioning.)
- Restored/recovered/re-established in a location that differs from a previously established position. (Show difference in plan view below.)
- Check here if additional information is shown on the reverse side of this form.

**Describe record evidence, recovered physical evidence, occupational evidence, testimonial evidence, and all other evidence considered in the recovery/restoration of the corner.**

1857 - Original corner established by H.C. Fellows - bearing trees: Pine, 10", S10°W, 16 links; Aspen, 9", N80°W, 18 links; Pine, 12", N80°E, 8 links; Aspen, 9", S40°E, 12 links.

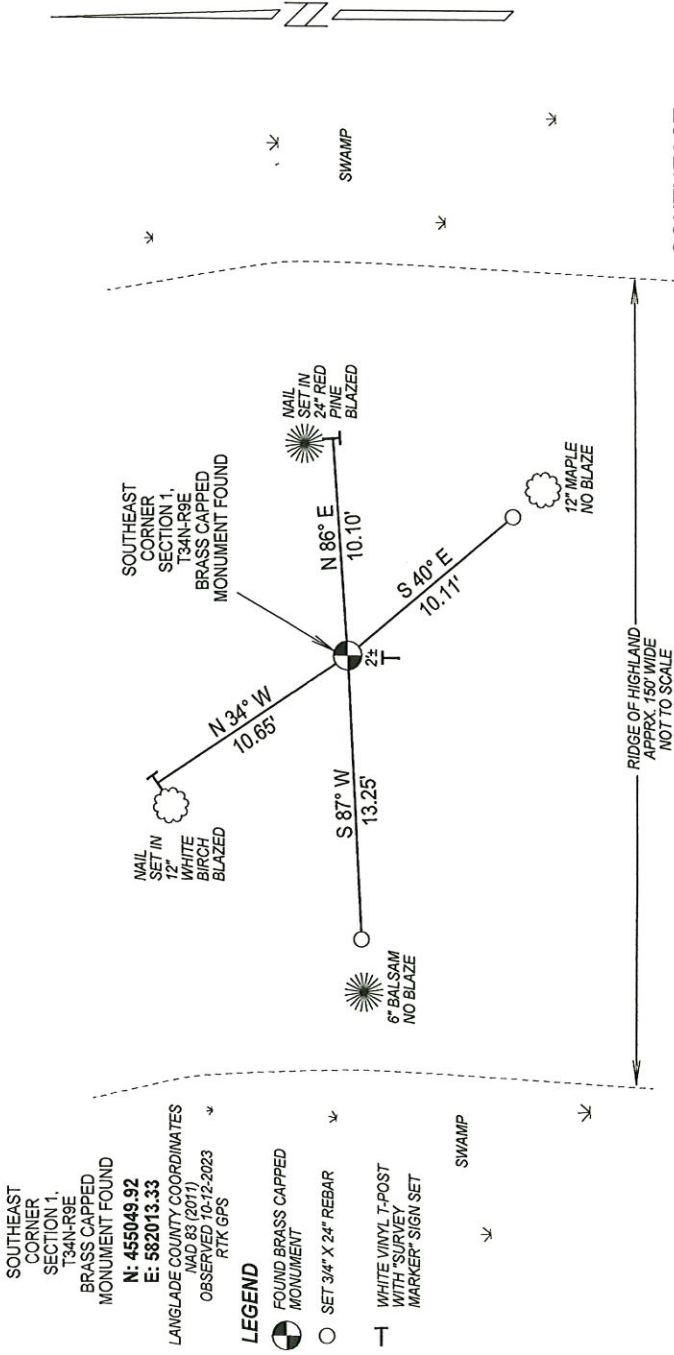
1937 - Resurvey of Township by T.H. Kilroe and D.A. Hintz found "old stake and rotted B.T." They made new witness trees; Norway 12" S55°E, 89.5 links and Norway 10" N40°E, 84 links. They measure distances of 41.42 chains (2733.72') to the East 1/4 Corner of Section 12, and 41.80 chains (2758.80') to the South 1/4 Corner of Section 1. They set a brass capped monument for this corner.

2023 - I found the brass capped monument set in 1937 resurvey in a rock mound in good condition. I verified location from distances of 1937 resurvey to the East 1/4 Corner of Section 12 and South 1/4 Corner of Section 1. I set new witness monuments and tied it out as shown below.

**Physical description of the monument set:**

Accepted brass capped monument as corner location and tied out as shown below.

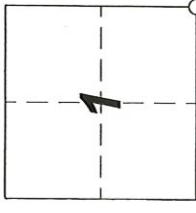
Describe the accessories used to perpetuate the location of the corner. Include a plan view drawing and indicate accessories found/set. Describe measuring point on bearing trees. Show any topographic features that would aid in future recovery of the corner.



The SOUTHEAST

Corner of Section 1

T. 34 N., R. 9 E.  
 Langlade County, WI



○ = Location of corner

SURVEYORS SEAL



- NOTES
- SKETCH NOT DRAWN TO SCALE.
  - TIE BEARINGS SHOWN ARE MAGNETIC.
  - TIES MEASURED WITH STEEL TAPE.
  - NAIL TIES SET IN LOW SIDE BLAZE.
  - LANGLADE COUNTY BT SIGN SET ON BLAZED BTS.

I, Michael J. Hoffman certify that the corner location shown on this record was determined by me or under my direction and control and that this U.S. Public Land Survey Monument Record is correct and complete to the best of my knowledge and belief.

Michael J. Hoffman Signature  
01/18/2024 Date