

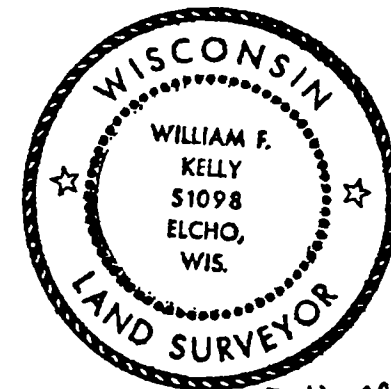
CERTIFIED LAND CORNER RESTORATION

Index No. A-1

33-9

State of Wisconsin }
County of LANGLADE } ss.

History of original corner establishment:



William F. Kelly

I, William F. Kelly, do hereby certify that on the 16th day of November, 1975, I found evidence of the SECTION corner of Sections 36, 31, 1 & 6 Township 34, North, Range 8 & 9 E, Fourth Principal Meridian, as described hereon; and that from this evidence I established a new monument and accessories as described hereon to perpetuate the original location of this corner.

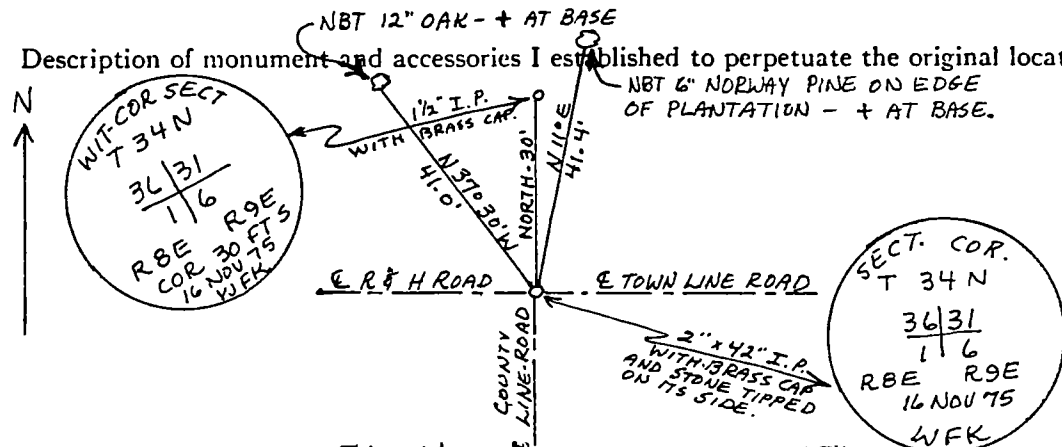
Description of corner evidence found:

Located Wit. Corner to a stone in road. Wit. Cor. had been hit by tree skidder and knocked out of position. Excavated road and found stone with a triangular corner pointing W. Stone was tipped on its side.

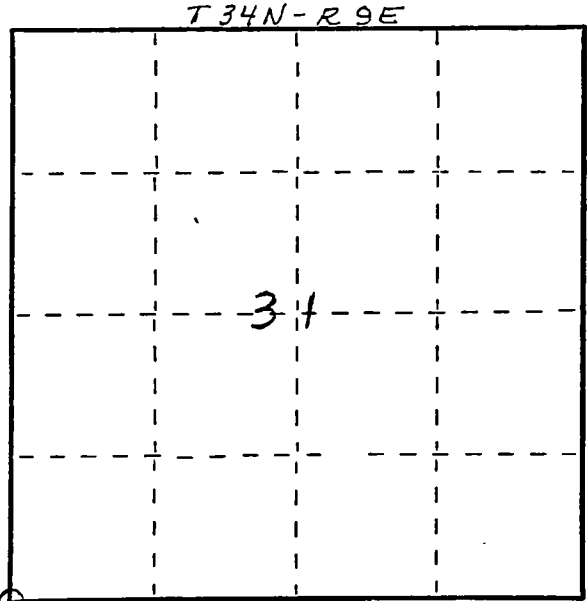
Resident witnesses:

.....
.....
.....

Description of monument and accessories I established to perpetuate the original location of this corner.



SET 2" x 42" PIPE WITH BRASS CAP MONUMENT AT CORNER - 6" UNDER ROAD SURFACE.
SET NEW WITNESS CORNER AND MARKED NEW BEARING TREES.



Dated at ELCHO, Wis., this 16th day of NOVEMBER, 1975.

Signature William F. Kelly Title Registered Land Surveyor Registration No. 51098
(County Surveyor, Registered Land Surveyor, or other duly authorized official)

Office of Register of Deeds, County of, I hereby certify that the within instrument was filed in this office for record on the day of, 19..... at o'clock M.

(Register of Deeds)

By Deputy

○ = Corner monument restored.

FORM 985 M. C. MILLER CO., MILWAUKEE