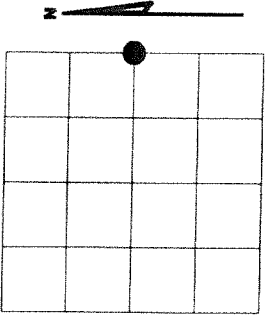


4340825 2000 2002

# U.S. PUBLIC LAND SURVEY MONUMENT RECORD

NOTE: This form is intended and designed to fulfill all requirements of Wisconsin Administrative Code, Chapter A-E 7.08 U.S. Public Land Survey Monument Record (3)(a)(b)(c)(d)(e)(f)(g)(h)(i). An additional sheet may be added if necessary to conform with said requirements.

(a) Corner location: Township 34 North  
 Range 08 East  
 Town of HARRISON  
 LINCOLN County, Wisconsin



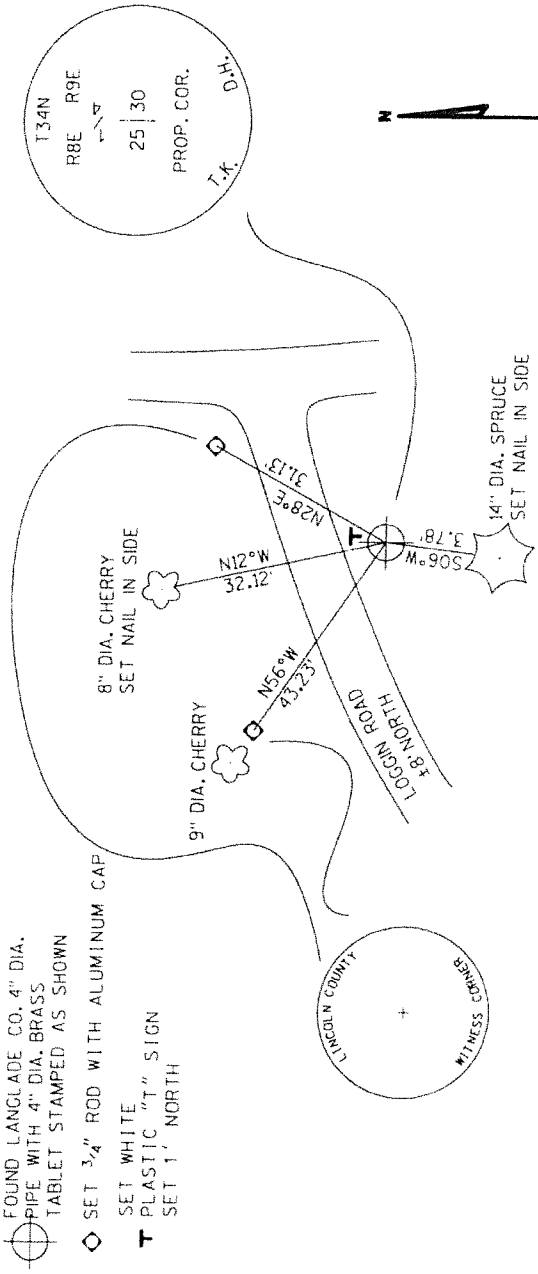
Section 25

(b)(f)(g)(h) Description of monument found at this corner and if it was accepted, state all evidence (material, testimonial, occupational, plats, records, other monuments) used as a basis for accepting. If not accepted or if nothing was found, state evidence used as basis for establishing location. If reestablished through lost corner proportionate methods, indicate all monuments, distances and directions used to establish. Indicate type of monument found or set and sign post.

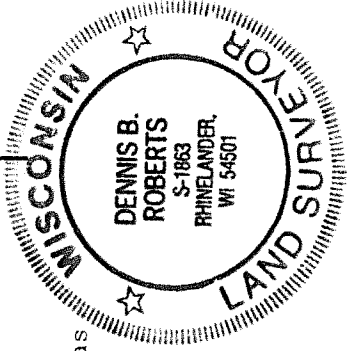
- 1851 - Original corner set by Jas. M. Marsh.
  - 1937 - Langlade Co. Prop. Corner, set 4" dia. pipe with 4" dia. brass tablet stamped as shown below.
  - 2002 - I found Langlade Co. 4" dia. pipe with 4" dia. brass tablet stamped as shown below.
- Witnessed corner as shown below.

RECEIVED AT LINCOLN COUNTY  
 COURTHOUSE THIS 11<sup>th</sup> DAY  
 OF December 20 02  
*Jerry Deeth*  
 LAND INFORMATION OFFICE

(c)(d)(e) Plan view of corner with ties to at least 4 witness monuments. If in disagreement with previously established corner, show the distances between the two corners and also indicate the ties to the disputed corner.



(i) I, Dennis B. Roberts, Registered Land Surveyor \*S-1863, hereby certify that the corner location on this record was determined by me or under my direction and control and that this U.S. Public Land Survey Monument Record is correct and complete to the best of my knowledge and belief.



*Dennis B. Roberts*  
 Signature

12-03-02  
 Date

Index No. 5-25