

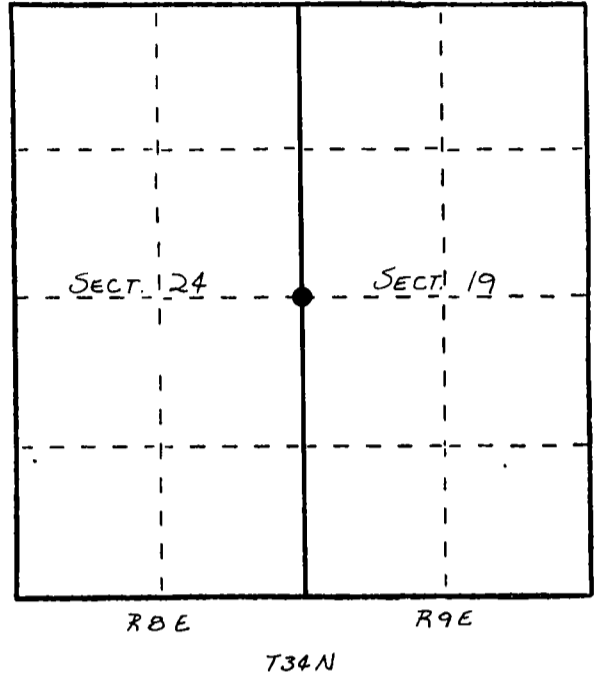
U. S. PUBLIC LAND SURVEY MONUMENT RECORD

INSTRUCTIONS: This record shall show the location of the corner and shall include all of the following nine elements (a through i).

- (a) Identify the corner by reference to the U.S. public land survey system.
 ○ = Corner monument restored.

ORIGINAL CORNER ESTABLISHED BY
 JAMES L NOWLIN IN SEPT-OCT, 1864.

CORNER RE-ESTABLISHED DURING
 1930'S C.L.C. RESURVEY

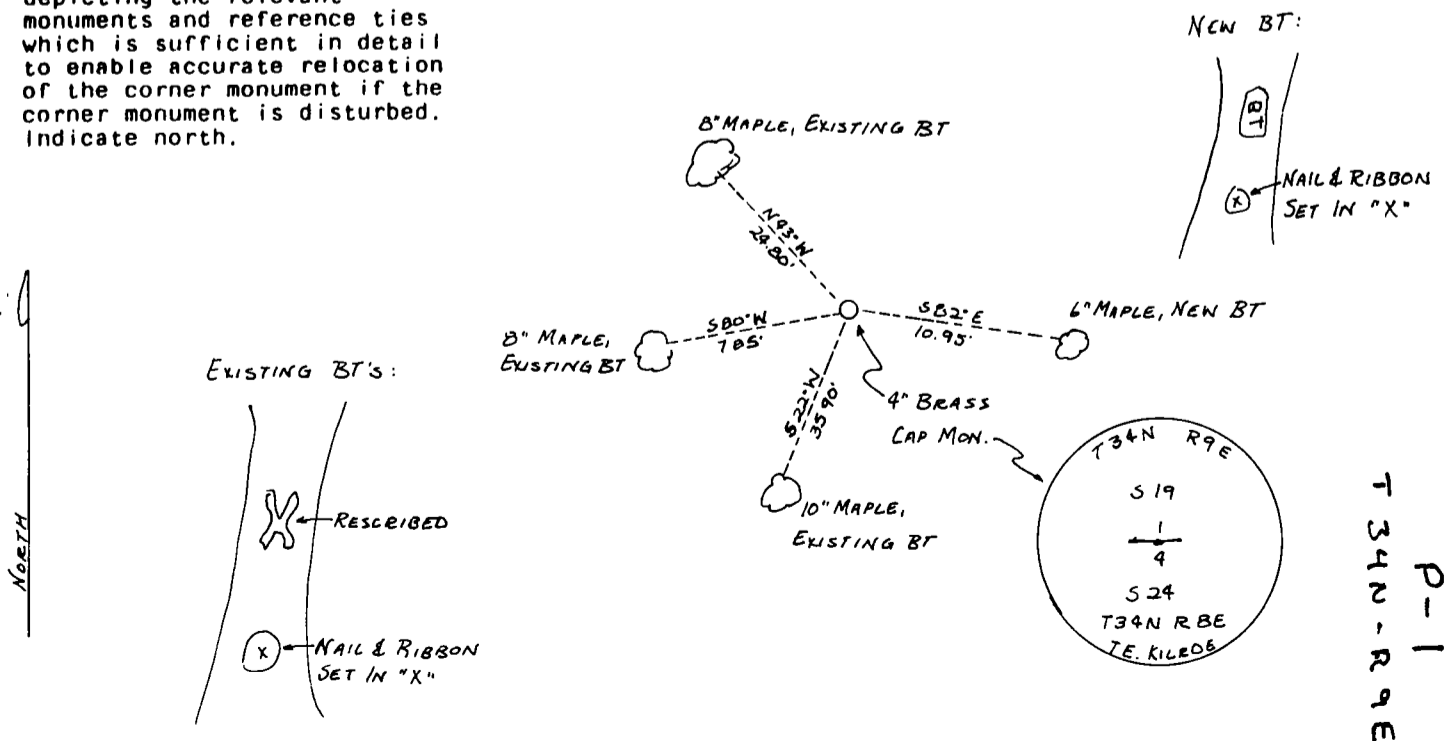


- (b) Describe any record evidence, monument evidence, occupational evidence, testimonial evidence or any other material evidence you considered, and whether the monument was found or placed.

FOUND IN PLACE: 4" BRASS CAP MONUMENT;
 3 EXISTING BT'S - RE-SCRIBED TREES
 1 NEW 6" MAPLE B.T. SCRIBED

- (c) In the plan view drawing below, provide reference ties to at least 4 witness monuments, or, if the location is within a municipality, to at least 2 witness monuments. (Witness monuments shall be made of concrete, natural stone, iron or other equally durable material.) Describe witness monuments.

- (d) Show a plan view drawing depicting the relevant monuments and reference ties which is sufficient in detail to enable accurate relocation of the corner monument if the corner monument is disturbed. Indicate north.



(e) Describe any material discrepancy between the location of the corner as restored or reestablished and the location of that corner as previously restored or reestablished by distance and direction. Show the discrepancy on the plan view drawing under (d), above. Show the distances between the corner as previously restored or reestablished and (1) the corner as restored or reestablished, and (2) to at least 2 of the witness monuments shown on the drawing in (d), above.

NONE

(f) Was the corner restored through acceptance of (1) an obliterated evidence location, or, (2) a found perpetuated location?

(2)

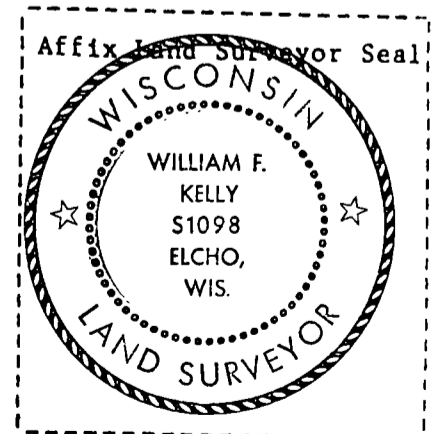
(g&h) Was the corner reestablished through lost corner proportionate methods? If so, show the method, including the directions and distances to other public land survey corners used as evidence or used for proportioning in determining the corner location?

No.

(1) I, WILLIAM F. KELLY
(type or print name) certify that the corner location shown on this record was determined by me or under my direction and control and that this U.S. Public Land Survey Monument Record is correct and complete to the best of my knowledge and belief.

William F. Kelly
Signature

11-18-84
Date



CERTIFIED LAND CORNER RESTORATION

Index No. P-1

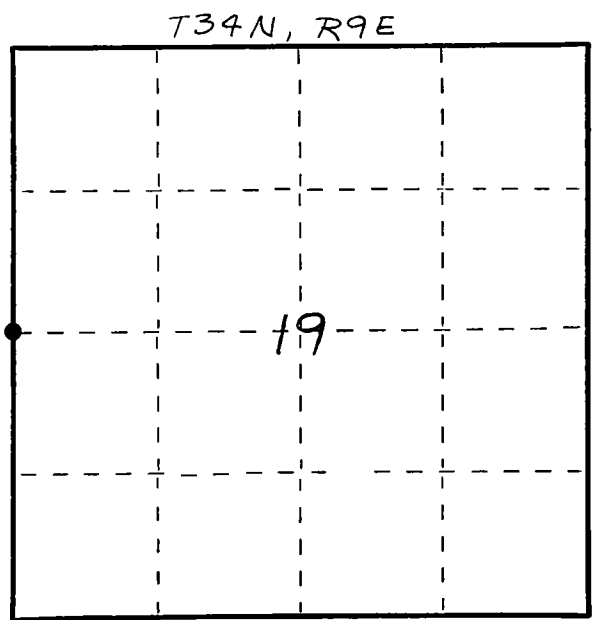
State of Wisconsin }
County of LANGLAE } ss.

I WILLIAM F. KELLY, do hereby certify that on the 13th day of Nov., 1981, I found evidence of the W 1/4 corner of SECTION 19 Township 34, North, Range 9 EAST, Fourth Principal Meridian, as described hereon; and that from this evidence I established a new monument and accessories as described hereon to perpetuate the original location of this corner.

Resident witnesses:

.....
.....
.....

FORM 985 H. C. MILLER CO. - MILWAUKEE



○ = Corner monument restored.

History of original corner establishment:

ORIGINAL CORNER ESTABLISHED BY
JAMES L. NOWLIN IN SEPT.-OCT., 1864

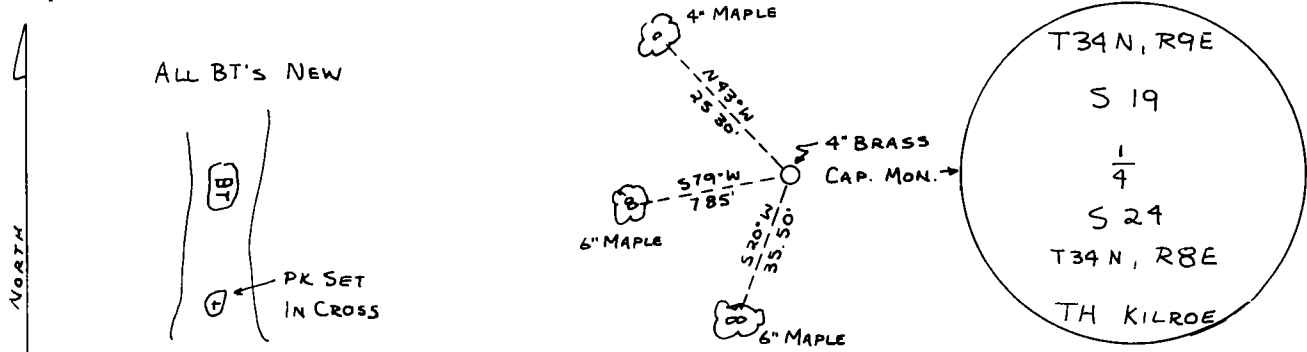
RESURVEY BY T.H. KILROE IN 1939.

Description of corner evidence found:

FOUND 4" BRASS CAP MONUMENT IN PLACE.
SCRIBED 3 NEW BT'S

MONUMENT SET AT LOCATION OF ORIGINAL
CORNER DURING RESURVEY BY T.H. KILROE IN 1939.

Description of monument and accessories I established to perpetuate the original location of this corner.

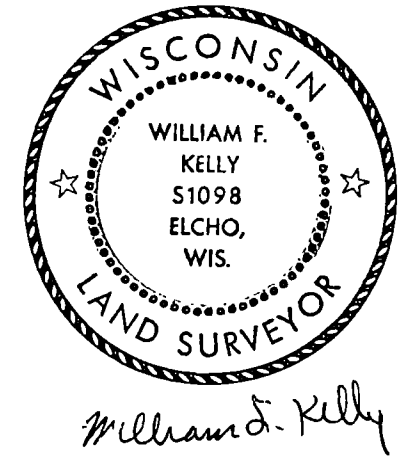


Dated at ELCHO, Wis., this 13th day of Nov., 1981.

Signature William F. Kelly Title COUNTY SURVEYOR Registration No. 1098
(County Surveyor, Registered Land Surveyor, or other duly authorized official)

Office of Register of Deeds, County of, I hereby certify that the within instrument was filed in this office for record on the day of, 19..... at o'clock M.

.....
(Register of Deeds)
By..... Deputy



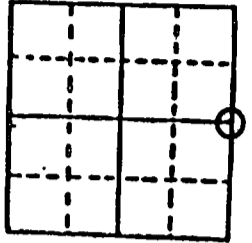
43408242000

U.S. PUBLIC LAND SURVEY MONUMENT RECORD

Note: This form is intended and designed to fulfill all requirements of Wisconsin Administrative Code, Chapter A-E 5.02, U.S. Public Land Survey Monument Record (3) (a) (b) (c) (d) (e) (f) (g) (h) (i). An additional sheet may be added if necessary to conform with said requirements.

(a) Corner location: Township 34 North
Range 8 East

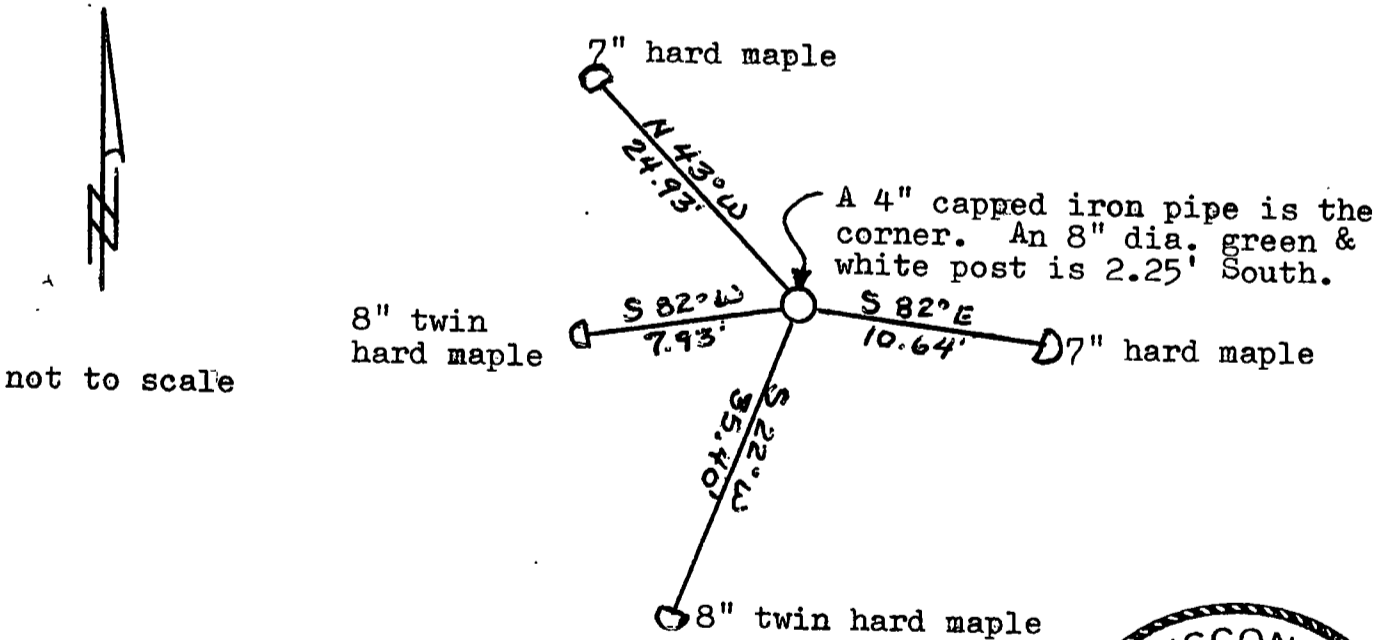
Town Harrison
County Lincoln



Section 24

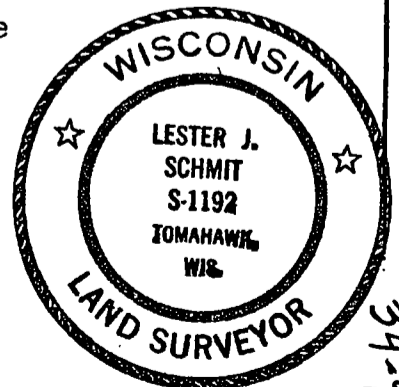
b) (f) (g) (h) Description of monument found at this corner and if it was accepted, state all evidence (material, testimonial, occupational, plats, records, other monuments) used as a basis for accepting. If not accepted or if nothing was found, state evidence used as basis for establishing location. If reestablished through lost corner proportionate methods, indicate all monuments, distances and directions used to establish. Original Gov't. Survey: 1851 by James M. Marsh, set wood post for corner with bearings, elm 8 S 20 E 41, sugar 8 S 21 W 18, sugar 12 N 30 W 64 & white pine 12 N 49 E 9. I found a 4" capped iron pipe for the corner with 4 old B.T.s having a nail & washer in the face of the B.T. to reference the corner as shown below.

c) (d) (e) Plan view of corner with ties to at least 4 witness monuments. If in disagreement with previously established corner, show the distances between the two corners and also indicate the ties to the disputed corner.



(i) I, Lester J. Schmit R.L.S. 1192
(type or print name) certify that the corner location on this record was determined by me or under my direction and control and that this U.S. Public Land Survey Monument Record is correct and complete to the best of my knowledge and belief.

Lester J. Schmit
Signature Date 7 May 91



Index No. P-1
34-9

RECEIVED AT LINCOLN COUNTY
COURTHOUSE THIS 13 DAY
OF May 1991
Pat Pribe
TAX DESCRIPTION OFFICE