

43408240200

# U.S. PUBLIC LAND SURVEY MONUMENT RECORD

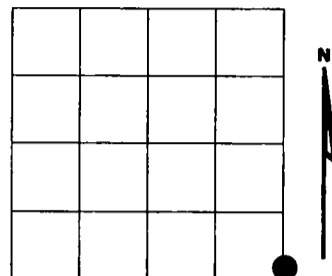
NOTE: This form is intended and designed to fulfill all requirements of Wisconsin Administrative Code, Chapter A-E 7.08 U.S. Public Land Survey Monument Record (3)(a)(b)(c)(d)(e)(f)(g)(h)(i). An additional sheet may be added if necessary to conform with said requirements.

(a) Corner location: Township 34 North

Range 08 East

Town of HARRISON

LINCOLN County, Wisconsin



Section 24

(b)(f)(g)(h) Description of monument found at this corner and if it was accepted, state all evidence (material, testimonial, occupational, plats, records, other monuments) used as a basis for accepting. If not accepted or if nothing was found, state evidence used as basis for establishing location. If reestablished through lost corner proportionate methods, indicate all monuments, distances and directions used to establish. Indicate type of monument found or set and sign post.

1937 - Corner set by Langlade county Kilroe and Hintz. Set 4" dia. pipe with 4" dia. brass tablet stampe as shown below.

- BTs: 10" birch N56°W 45.75'
- 12" birch N32°E 41.5'
- 10" birch S 50°E 27.72'

2002 - I found Langlade county monument lying down in swamp and 8" dia. wood post lying down along side. Reset monument from BTs.

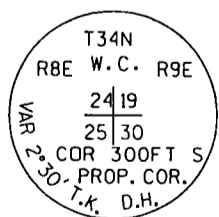
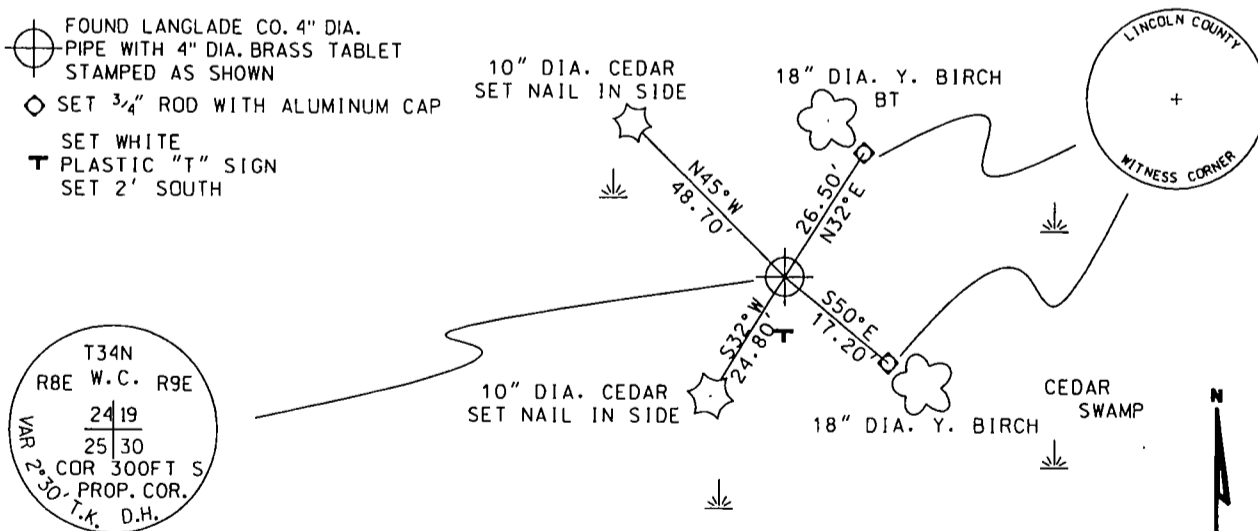
- BTs found: 18" y. birch N32°E 27.39'
- 18" y. birch S50°E 18.3'
- y. birch stump N56°W 30.2'

Witness corner as shown below.

RECEIVED AT LINCOLN COUNTY  
 COURTHOUSE THIS 11<sup>TH</sup> DAY  
 OF December 20 02  
Tony Dahn  
 LAND INFORMATION OFFICE

(c)(d)(e) Plan view of corner with ties to at least 4 witness monuments If in disagreement with previously established corner, show the distances between the two corners and also indicate the ties to the disputed corner.

- FOUND LANGLADE CO. 4" DIA. PIPE WITH 4" DIA. BRASS TABLET STAMPED AS SHOWN
- SET 3/4" ROD WITH ALUMINUM CAP
- SET WHITE PLASTIC "T" SIGN SET 2' SOUTH



(i) I, Dennis B. Roberts, Registered Land Surveyor \*S-1863, hereby certify that the corner location on this record was determined by me or under my direction and control and that this U.S. Public Land Survey Monument Record is correct and complete to the best of my knowledge and belief.

Dennis B. Roberts  
Signature

12-03-02  
Date



Q-R 1 34-9  
Index No. 18-25