

# U. S. PUBLIC LAND SURVEY MONUMENT RECORD

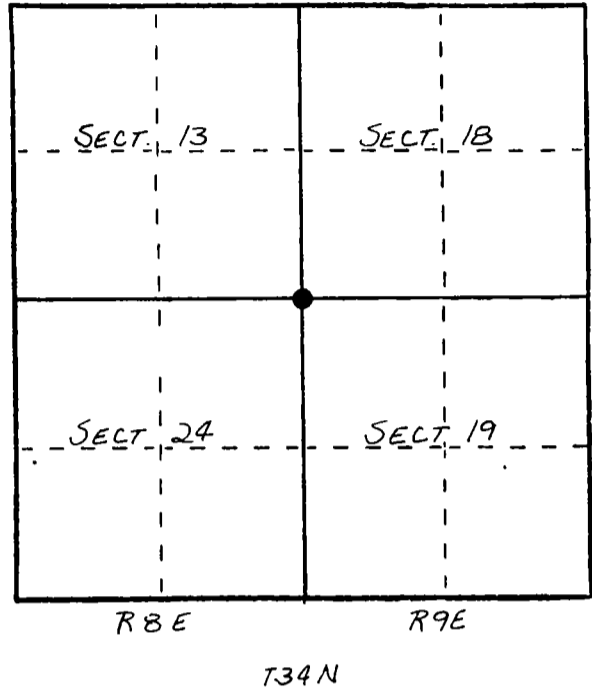
**INSTRUCTIONS:** This record shall show the location of the corner and shall include all of the following nine elements (a through i).

- (a) Identify the corner by reference to the U.S. public land survey system.

○ = Corner monument restored.

ORIGINAL CORNER ESTABLISHED BY JAMES MARSH IN AUG. 1851.

CORNER RE-ESTABLISHED DURING 1930'S C.C.C. RESURVEY.

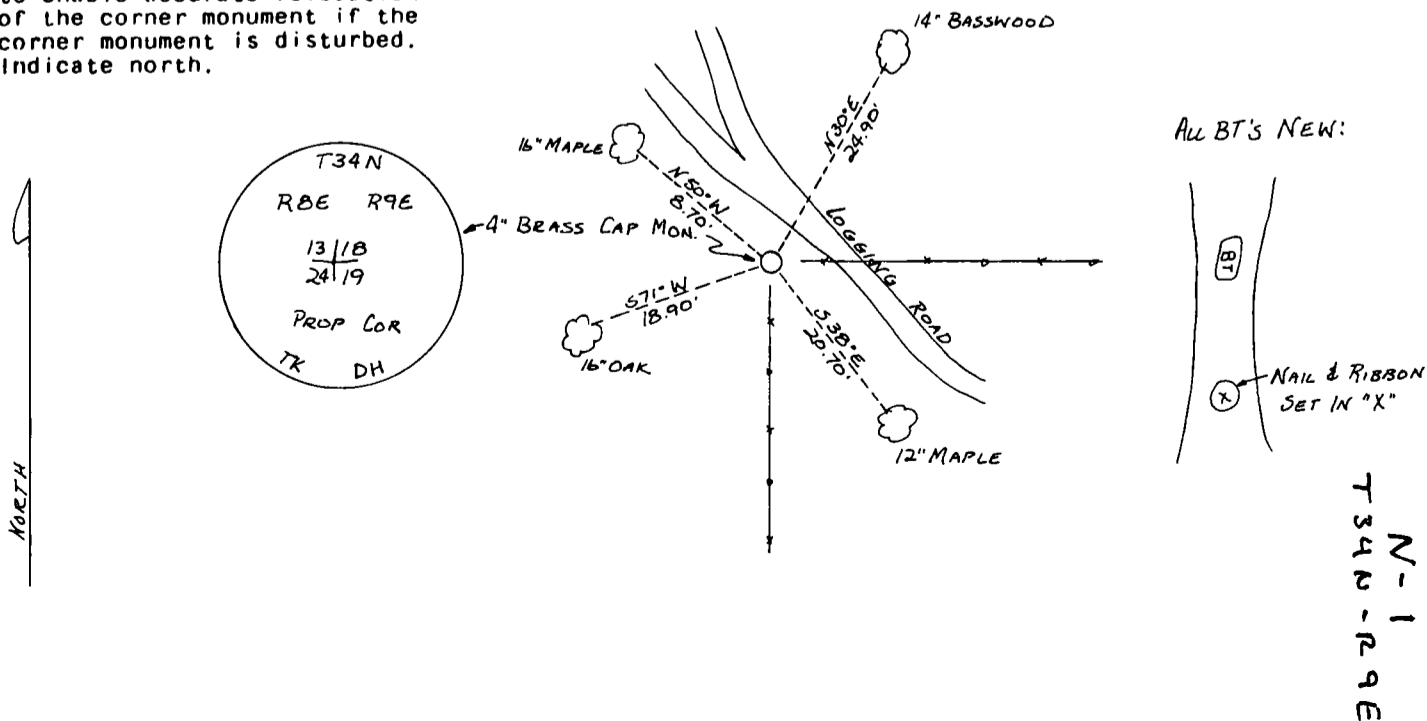


- (b) Describe any record evidence, monument evidence, occupational evidence, testimonial evidence or any other material evidence you considered, and whether the monument was found or placed.

FOUND IN PLACE: 4" BRASS CAP MONUMENT  
Established Four New Bearing Trees

- (c) In the plan view drawing below, provide reference ties to at least 4 witness monuments, or, if the location is within a municipality, to at least 2 witness monuments. (Witness monuments shall be made of concrete, natural stone, iron or other equally durable material.) Describe witness monuments.

- (d) Show a plan view drawing depicting the relevant monuments and reference ties which is sufficient in detail to enable accurate relocation of the corner monument if the corner monument is disturbed. Indicate north.



(e) Describe any material discrepancy between the location of the corner as restored or reestablished and the location of that corner as previously restored or reestablished by distance and direction. Show the discrepancy on the plan view drawing under (d), above. Show the distances between the corner as previously restored or reestablished and (1) the corner as restored or reestablished, and (2) to at least 2 of the witness monuments shown on the drawing in (d), above.

NONE

(f) Was the corner restored through acceptance of (1) an obliterated evidence location, or, (2) a found perpetuated location?

(2)

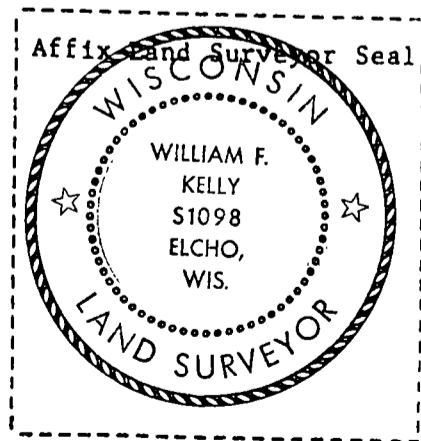
(g&h) Was the corner reestablished through lost corner proportionate methods? If so, show the method, including the directions and distances to other public land survey corners used as evidence or used for proportioning in determining the corner location?

No

(1) I, WILLIAM F. KELLY  
(Type or print name) certify that the corner location shown on this record was determined by me or under my direction and control and that this U.S. Public Land Survey Monument Record is correct and complete to the best of my knowledge and belief.

William F. Kelly  
Signature

11-18-84  
Date



CERTIFIED LAND CORNER RESTORATION

Index No. N-1

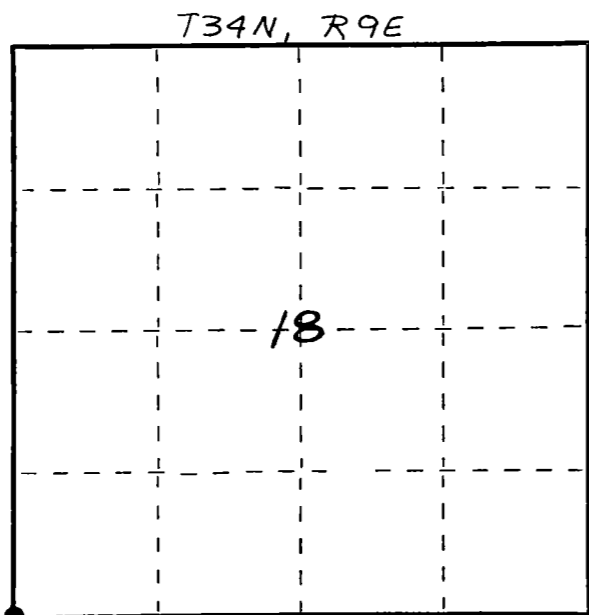
State of Wisconsin }  
 County of LANGLADE } ss.

I WILLIAM F. KELLY, do hereby certify that on the 13<sup>th</sup> day of Nov., 1981, I found evidence of the SW corner of SECTION 18 Township 34, North, Range 9 EAST, Fourth Principal Meridian, as described hereon; and that from this evidence I established a new monument and accessories as described hereon to perpetuate the original location of this corner.

Resident witnesses:

.....  
 .....  
 .....

FORM 985 H. C. MILLER CO. - MILWAUKEE



○ = Corner monument restored.

History of original corner establishment:

ORIGINAL CORNER ESTABLISHED BY  
 JAMES L. NOWLIN IN SEPT-OCT, 1864

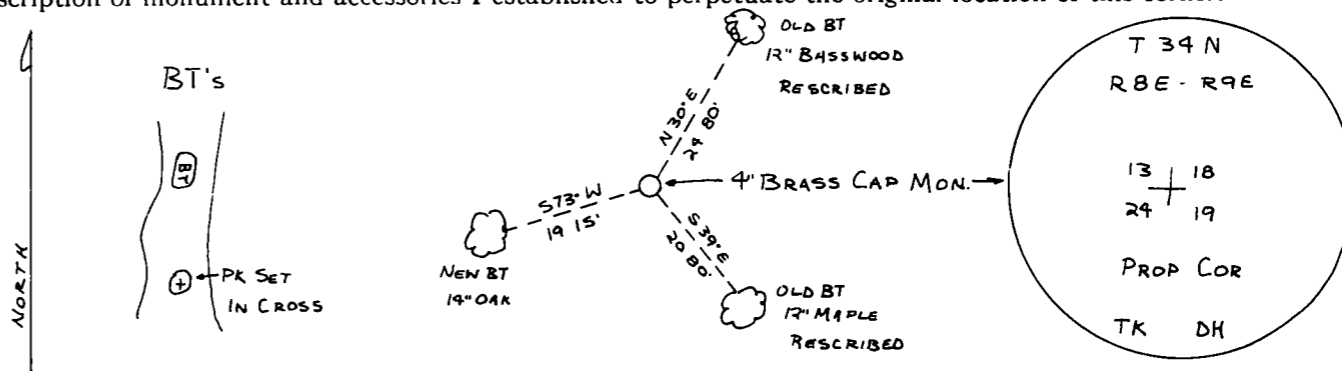
RESURVEYED IN 1939 BY T.H. KILROE  
 AND D.A. HINTZ.

Description of corner evidence found:

4" BRASS CAP MONUMENT, FOUND IN PLACE  
 DESCRIBED 2 EXISTING BT'S. SCRIBED  
 1 NEW BT.

MONUMENT SET AT LOCATION OF ORIGINAL  
 CORNER DURING RESURVEY IN 1939 BY  
 T.H. KILROE AND D.A. HINTZ.

Description of monument and accessories I established to perpetuate the original location of this corner.

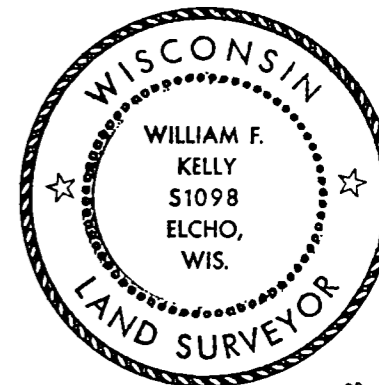


Dated at ELCHO, Wis., this 13<sup>th</sup> day of Nov., 1981.

Signature William F. Kelly Title COUNTY SURVEYOR Registration No. 1098  
 (County Surveyor, Registered Land Surveyor, or other duly authorized official)

Office of Register of Deeds, County of ....., I hereby certify that the within instrument was filed in this office for record on the ..... day of ....., 19..... at ..... o'clock ..... M.

.....  
 (Register of Deeds)  
 By..... Deputy



*William F. Kelly*