

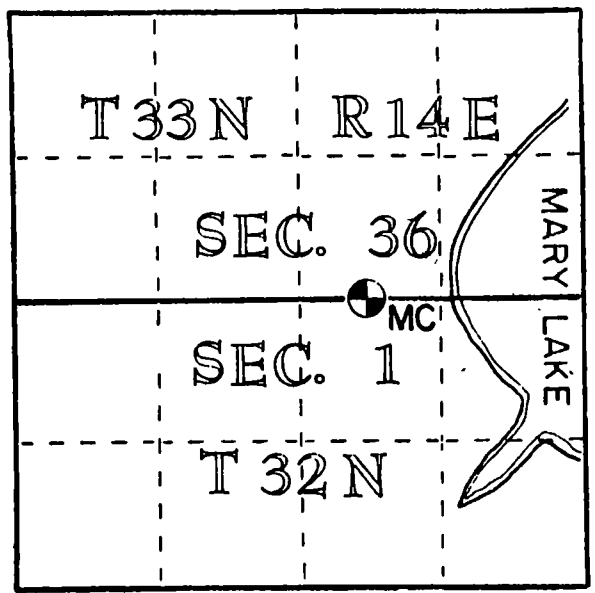
Langlade Co. Wis.

U. S. PUBLIC LAND SURVEY MONUMENT RECORD

INSTRUCTIONS: This record shall show the location of the corner and shall include all of the following nine elements (a through i).

- (a) Identify the corner by reference to the U.S. public land survey system.
- = Corner monument restored.

Meander corner between Sections 36, T33N, R14E and 1, T32N, R14E, Langlade County, Wisconsin.

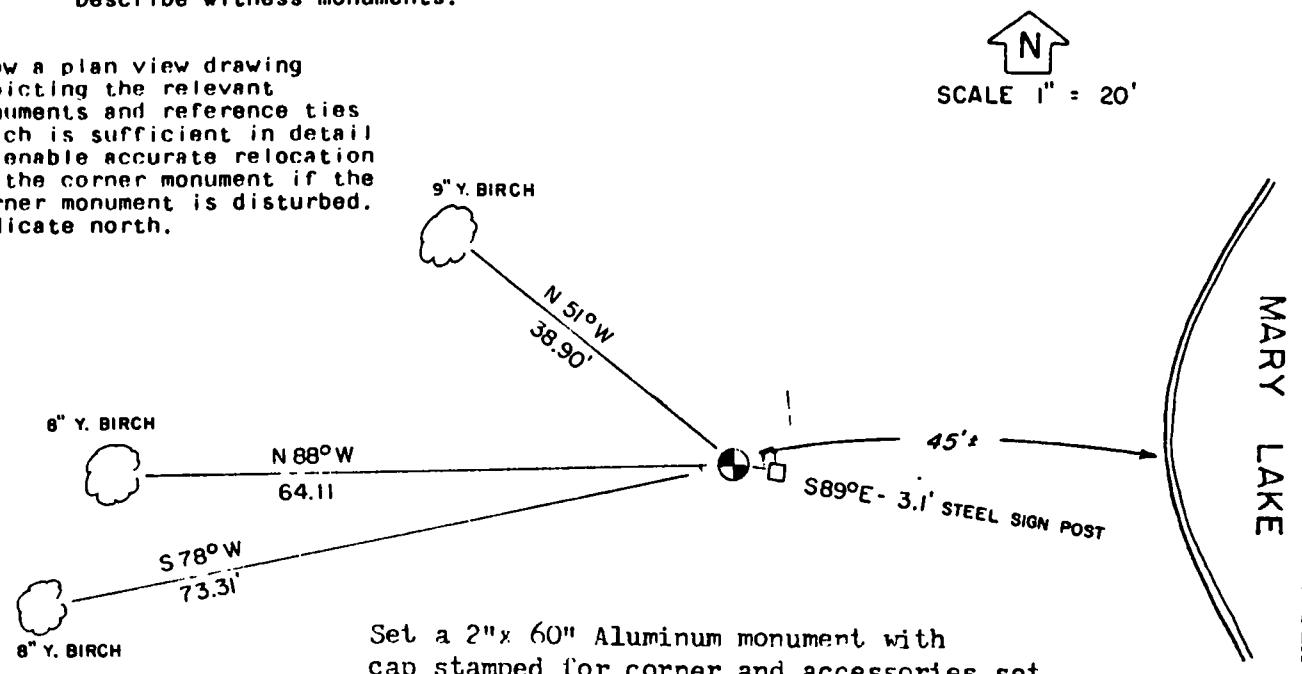


- (b) Describe any record evidence, monument evidence, occupational evidence, testimonial evidence or any other material evidence you considered, and whether the monument was found or placed.

In 1857 the government surveyor set a wood post 48.43 chains west of the town corner with: Tamarack 12" S47W 199 links and a Tamarack 16" S40W 1 1/2 links. In 1936 N Sandburg found a wood post and placed a metal tag on a 8" Tamarack S64W and 0.08 chains from the corner. Feaver had swamped the area and Sandburg's points were not found. I used a truck winch to clear out underbrush and 18" under swamp grass found old post point and other post pieces. Pulled S40W for 93.72 feet and found old yellow Birch growing out of coniferous stump. The post point fit dimensions from the line tree which I found to the west. Monumented said post point from original evidence.

- (c) In the plan view drawing below, provide reference ties to at least 4 witness monuments, or, if the location is within a municipality, to at least 2 witness monuments. (Witness monuments shall be made of concrete, natural stone, iron or other equally durable material.) Describe witness monuments.

- (d) Show a plan view drawing depicting the relevant monuments and reference ties which is sufficient in detail to enable accurate relocation of the corner monument if the corner monument is disturbed. Indicate north.



Set a 2" x 60" Aluminum monument with cap stamped for corner and accessories set to USFS standard.

SCALE 1" = 20'

INDEX NO. 2-20,23
 33-14

(e) Describe any material discrepancy between the location of the corner as restored or reestablished and the location of that corner as previously restored or reestablished by distance and direction. Show the discrepancy on the plan view drawing under (d), above. Show the distances between the corner as previously restored or reestablished and (1) the corner as restored or reestablished, and (2) to at least 2 of the witness monuments shown on the drawing in (d), above.

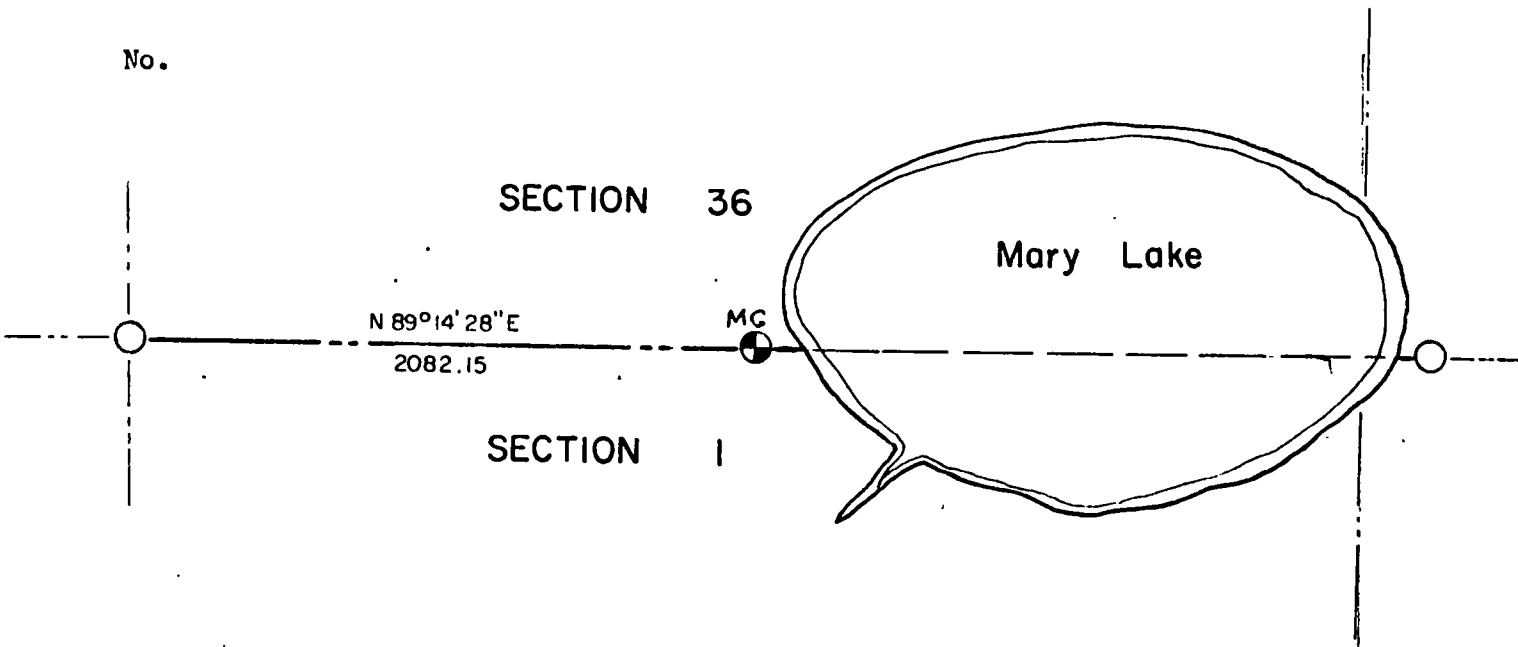
No discrepancy.

(f) Was the corner restored through acceptance of (1) an obliterated evidence location, or, (2) a found perpetuated location?

Found perpetuated location.

(g&h) Was the corner reestablished through lost corner proportionate methods? If so, show the method, including the directions and distances to other public land survey corners used as evidence or used for proportioning in determining the corner location?

No.



(1) I, Kim H Pritzlaff
(type or print name) certify that the corner location shown on this record was determined by me or under my direction and control and that this U.S. Public Land Survey Monument Record is correct and complete to the best of my knowledge and belief.

Kim Pritzlaff 7/2/24
Signature Date