

Langlade Co

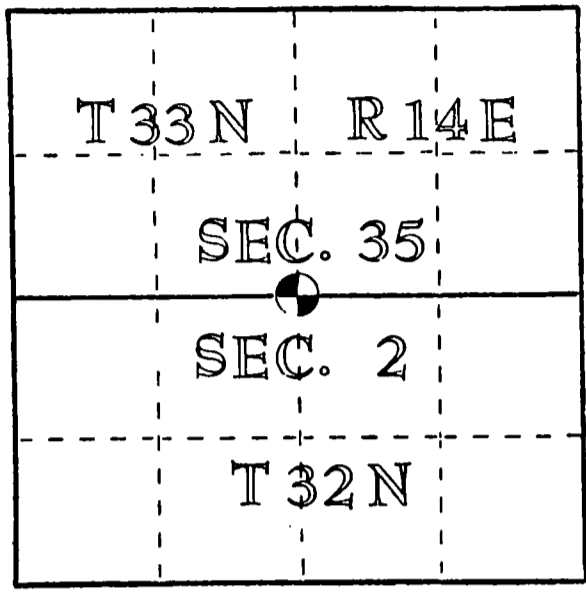
U. S. PUBLIC LAND SURVEY MONUMENT RECORD

INSTRUCTIONS: This record shall show the location of the corner and shall include all of the following nine elements (a through i).

(a) Identify the corner by reference to the U.S. public land survey system.

O = Corner monument restored.

Quarter section corner to Sections 35, T33N, R14E and 2, T32N, R14E, Langlade County, Wisconsin



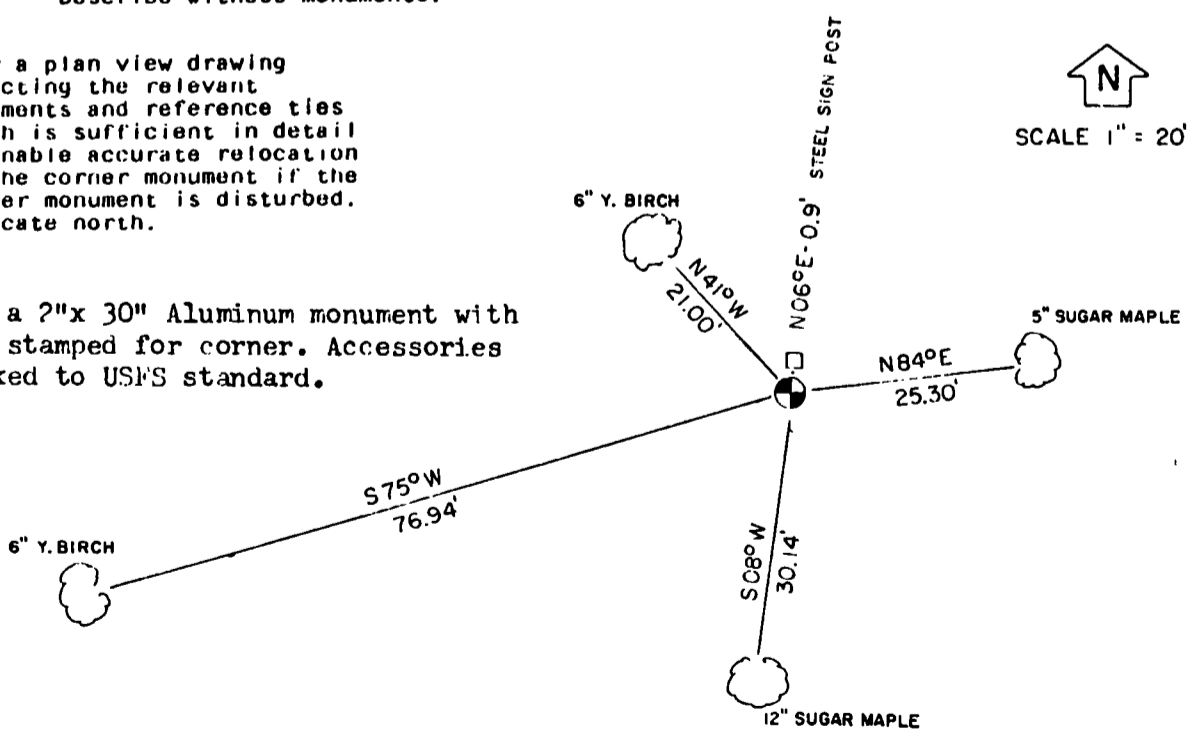
(b) Describe any record evidence, monument evidence, occupational evidence, testimonial evidence or any other material evidence you considered, and whether the monument was found or placed.

In 1857, Alfred Millard set a wood post at 40.00 chains with: Hemlock 12" N75W 45 links and a Hemlock 18" S12E 56 links. At 37.54 chains he marked a 24" Sugar and at 40.79 chains a 9" Sugar. Found Hemlock stump N75W 29.70' and a Hemlock rotting S12E 39.96'. Went East and at 161.46 ft found a hardwood stump hole and at 53 feet west located another hardwood stump hole both possible Sugar stumps. There also were blazed sugar Maple trees facing this corner location. I monumented this corner based on the two Hemlock stumps.

(c) In the plan view drawing below, provide reference ties to at least 4 witness monuments, or, if the location is within a municipality, to at least 2 witness monuments. (Witness monuments shall be made of concrete, natural stone, iron or other equally durable material.) Describe witness monuments.

(d) Show a plan view drawing depicting the relevant monuments and reference ties which is sufficient in detail to enable accurate relocation of the corner monument if the corner monument is disturbed. Indicate north.

Set a 2"x 30" Aluminum monument with cap stamped for corner. Accessories marked to USFS standard.



SCALE 1" = 20'

INDEX NO. 2-19

33-14

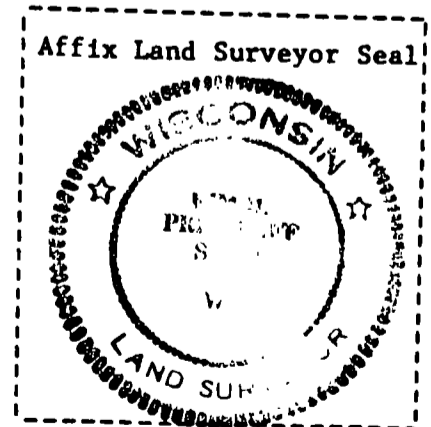
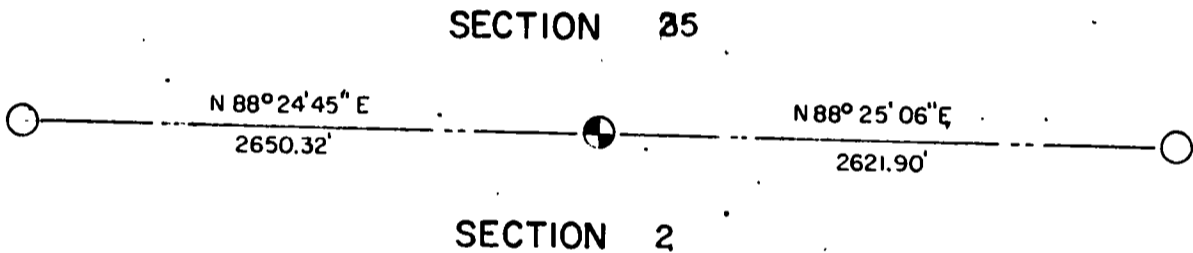
(e) Describe any material discrepancy between the location of the corner as restored or reestablished and the location of that corner as previously restored or reestablished by distance and direction. Show the discrepancy on the plan view drawing under (d), above. Show the distances between the corner as previously restored or reestablished and (1) the corner as restored or reestablished, and (2) to at least 2 of the witness monuments shown on the drawing in (d), above.

No discrepancy.

(f) Was the corner restored through acceptance of (1) an obliterated evidence location, or, (2) a found perpetuated location?

A found perpetuated location.

(g&h) Was the corner reestablished through lost corner proportionate methods? If so, show the method, including the directions and distances to other public land survey corners used as evidence or used for proportioning in determining the corner location?



(1) I, Kim H Pritzlaff
 (type or print name) certify that the corner location shown on this record was determined by me or under my direction and control and that this U.S. Public Land Survey Monument Record is correct and complete to the best of my knowledge and belief.

Kim Pritzlaff Signature 6/26/84 Date

William F. Kelly Co. Surveyor Restored Corner 6-25-86