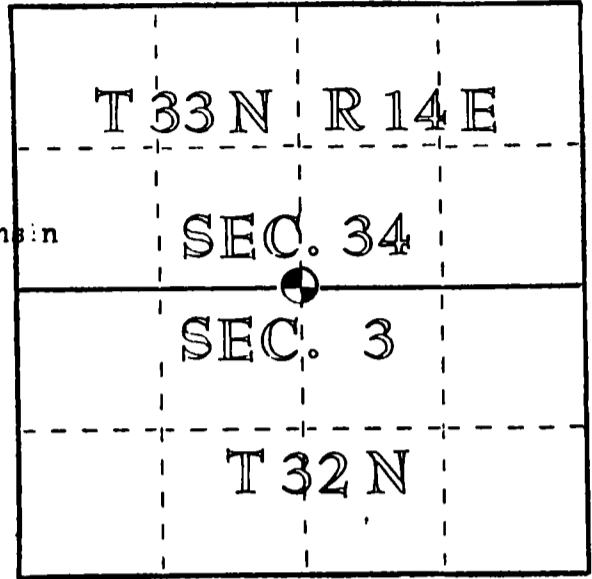


U. S. PUBLIC LAND SURVEY MONUMENT RECORD

INSTRUCTIONS: This record shall show the location of the corner and shall include all of the following nine elements (a through i).

- (a) Identify the corner by reference to the U.S. public land survey system.
 ○ = Corner monument restored.

Quarter corner to Sections 34, T33N, R14E and 3, T32N, R14E, Langlade County, Wisconsin



- (b) Describe any record evidence, monument evidence, occupational evidence, testimonial evidence or any other material evidence you considered, and whether the monument was found or placed.

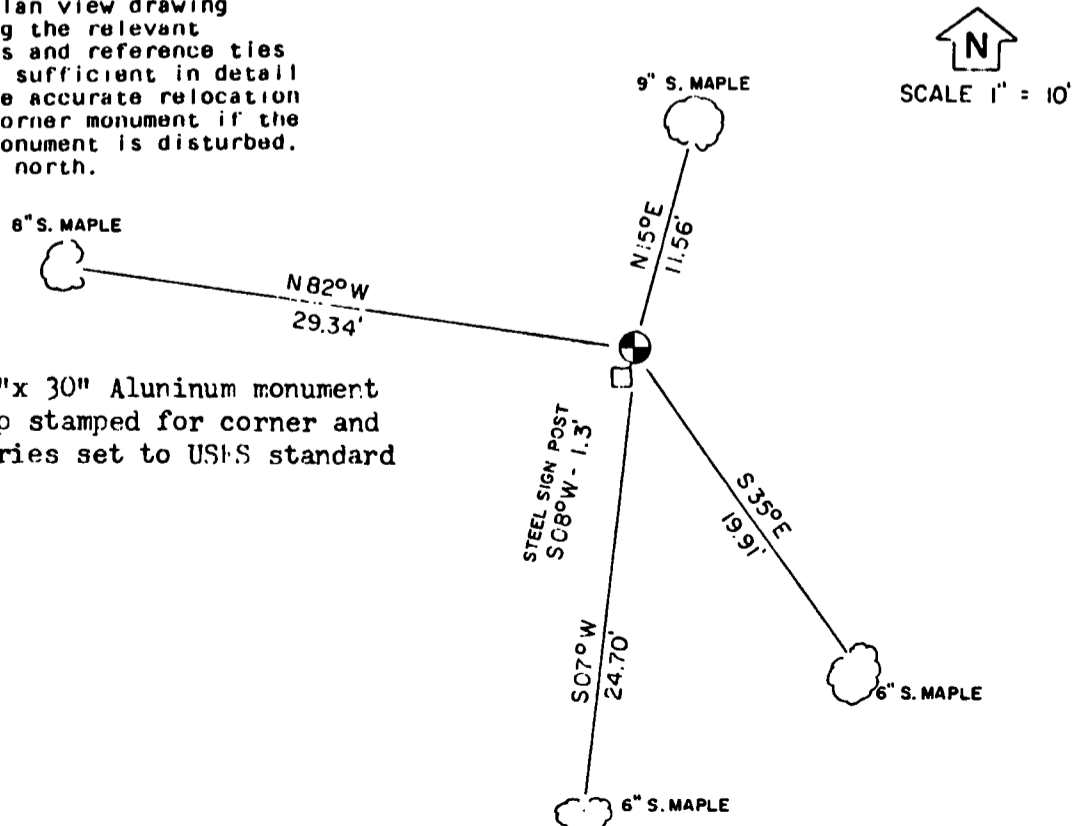
In 1857 the government set a wood post at 40.00 chains with: Yellow Birch 10" N 48E 19 links and a Hemlock 20" S55W 40 links.

In 1933 Arthur Wolf found a 1 1/4" iron pipe at this location.

Did not recover any original evidence or Wolf's iron pipe. Area was searched with a Schonstedt magnetic locator. Trees were blazed in this area but no definite point could be located. I set this corner by lost methods at single proportionate measure.

- (c) In the plan view drawing below, provide reference ties to at least 4 witness monuments, or, if the location is within a municipality, to at least 2 witness monuments. (Witness monuments shall be made of concrete, natural stone, iron or other equally durable material.) Describe witness monuments.

- (d) Show a plan view drawing depicting the relevant monuments and reference ties which is sufficient in detail to enable accurate relocation of the corner monument if the corner monument is disturbed. Indicate north.



Set a 2"x 30" Aluminum monument with cap stamped for corner and accessories set to USFS standard

(e) Describe any material discrepancy between the location of the corner as restored or reestablished and the location of that corner as previously restored or reestablished by distance and direction. Show the discrepancy on the plan view drawing under (d), above. Show the distances between the corner as previously restored or reestablished and (1) the corner as restored or reestablished, and (2) to at least 2 of the witness monuments shown on the drawing in (d), above.

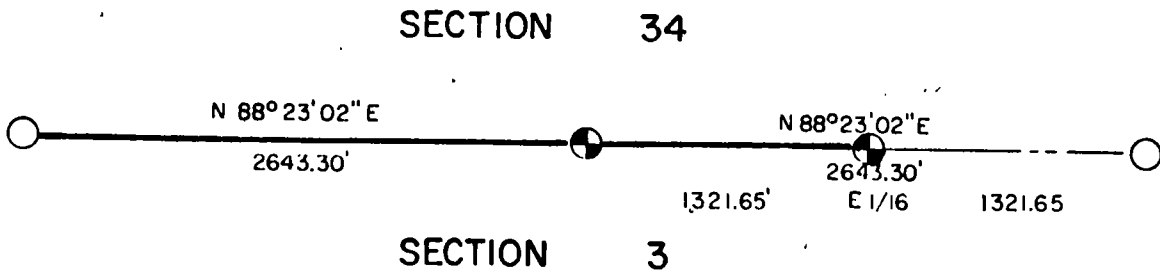
No discrepancy.

(f) Was the corner restored through acceptance of (1) an obliterated evidence location, or, (2) a found perpetuated location?

Obliterated evidence location

(g&h) Was the corner reestablished through lost corner proportionate methods? If so, show the method, including the directions and distances to other public land survey corners used as evidence or used for proportioning in determining the corner location?

Lost corner methods.



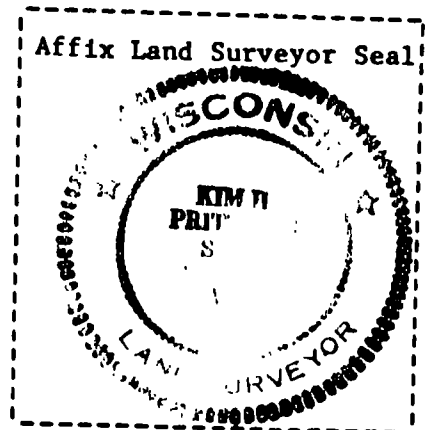
The East sixteenth corner between Sections 3 and 34, T32N, R14E and T33N, R14E respectively, was set at midpoint between the northeast and north quarter corners of section 3 with the following accessories:

- Basswood 6" N31E 27.85'
- Basswood 6" S50E 32.89'
- Sugar 6" N27W 60.87'
- Steel sign post East 1.80'

The line between Sections 3 and 34 above, was marked and brought to USFS standard from the northwest corner of 3 and running east to the East sixteenth corner above.

Kim H Pritzlaff

(1) I, Kim H Pritzlaff (type or print name) certify that the corner location shown on this record was determined by me or under my direction and control and that this U.S. Public Land Survey Monument Record is correct and complete to the best of my knowledge and belief.



Signature Kim H Pritzlaff Date 6/26/84

William S. Kelly Co. Surveyor Corner marked 6-25-86