

# LANGLADE COUNTY U.S. PUBLIC LAND CORNER RESTORATION

The South Quarter corner of Section 31, T. 33 N., R. 14 E., Langlade County, WI.

Corner was: (check all that apply)

3314310020

- Restored through acceptance of an obliterated evidence location.
- Restored through acceptance of a found perpetuated location.
- Determined to be lost and re-established through proportionate methods.  
(Show bearings and distances to PLSS corners used for proportioning, and show original distances).
- Restored/recovered/re-established in a location that differs from a previously established position.  
(Show difference in plan view below).
- Check here if addition information is shown on the reverse side of this form.

**Describe record evidence, recovered physical evidence, occupational evidence, testimonial evidence and all other evidence considered in the recovery/restoration of the corner.**

The original corner was established in 1857 by Alfred Millard. Original bearing trees: fir, 10", N25°W, 30 links, and a hemlock, 12", S37°E 30 links. In 1915, Malcom Hutchinson described this corner as:

"...1/4 post. found elm tree marked for 1/4 Very old no question about be Gov. but notes call for Hemlock, course on old sec line and distance from cor. is right". He measured two new BT's: hemlock, 14", S 19° E, 57 1/2 links and a sugar, 15", S52°W, 26 links. I re-established this corner by retracement of Hutchinsons survey in 1915, by first computing a position for the center of Section 6 by proportioning on the E-W quarter line using Hutchinsons distances as a basis. I then projected a line from the S1/4 corner, northerly through the computed center and intersected this line with the extension of a fence from the West. I believe this fence was built with knowledge of where the 1/4 corner post was.

The distance I get from here to the computed center 1/4 corner is in very good agreement with Hutchinson. See my map dated 11/30/2000 for distance comparisons and prorations.

**Physical description of the monument set:**

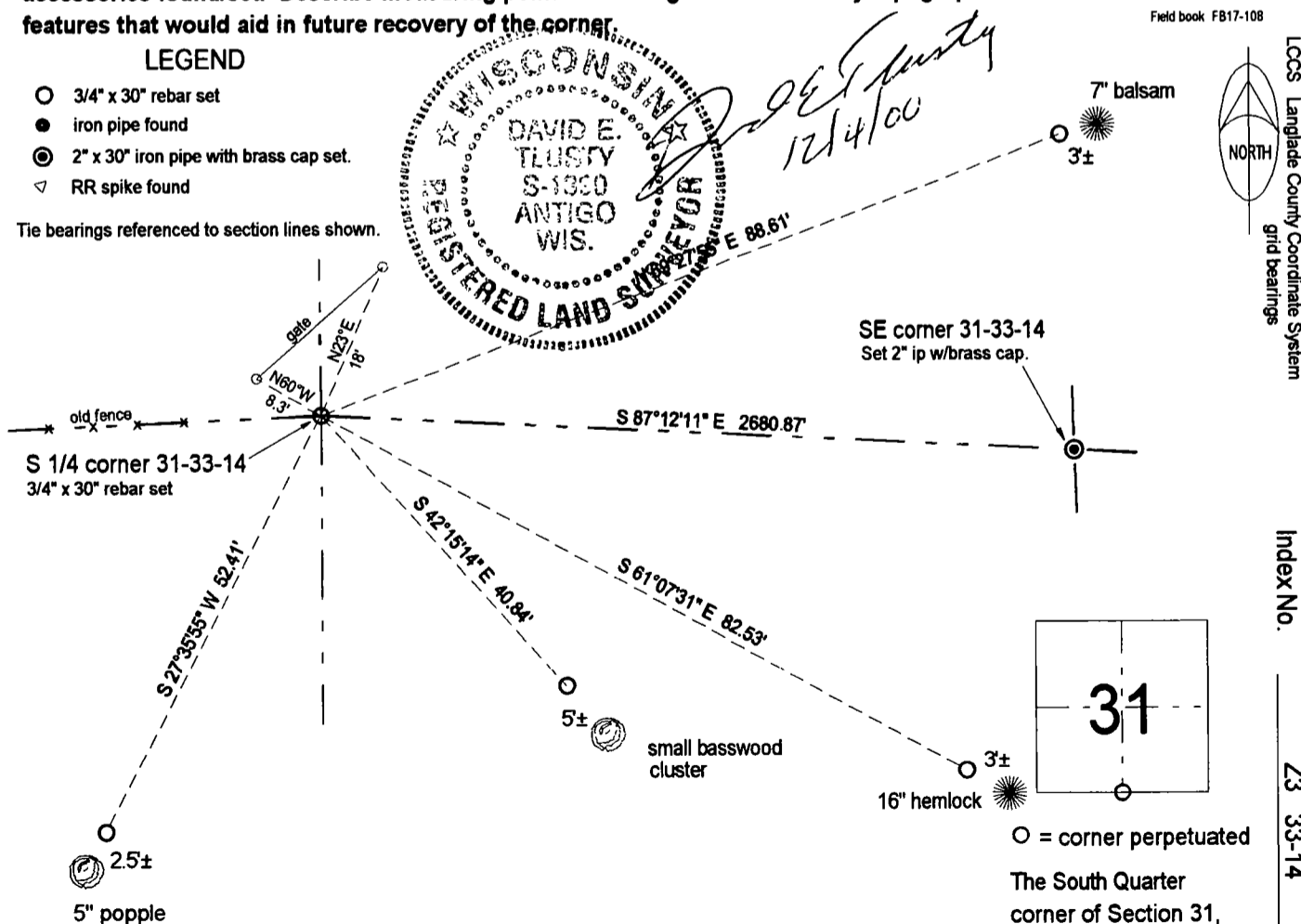
I set a 3/4" x 30" rebar for the corner.

**Describe the accessories used to perpetuate the corner. Include a plan view drawing and accessories found/set. Describe measuring point on bearing trees. Show any topographic features that would aid in future recovery of the corner.**

**LEGEND**

- 3/4" x 30" rebar set
- iron pipe found
- ⊙ 2" x 30" iron pipe with brass cap set.
- ▽ RR spike found

Tie bearings referenced to section lines shown.



Field book FB17-108

LCSS Langlade County Coordinate System grid bearings



Index No. Z3 33-14

○ = corner perpetuated

The South Quarter corner of Section 31, T. 33 N., R. 14 E., Langlade County, WI

I, David E. Tlusty, Registered Land Surveyor, as Langlade County Surveyor, certify that the corner location on this record was determined by me and that this U.S. Public Land Survey Monument Record is correct to the best of my knowledge and belief.