

# LANGLADE COUNTY U.S. PUBLIC LAND CORNER RESTORATION

The Southeast corner of Section 31, T. 33 N., R. 14 E., Langlade County, WI.

Corner was: (check all that apply)

3314310000

- Restored through acceptance of an obliterated evidence location.
- Restored through acceptance of a found perpetuated location
- Determined to be lost and re-established through proportionate methods.  
Show bearings and distances to PLSS corners used for proportioning, and show original distances).
- Restored/recovered/re-established in a location that differs from a previously established position.  
(Show difference in plan view below).
- Check here if addition information is shown on the reverse side of this form.

**Describe record evidence, recovered physical evidence, occupational evidence, testimonial evidence and all other evidence considered in the recovery/restoration of the corner.**

The original corner was established in 1857 by Alfred Millard. Original bearing trees: sugar, 14", N20°W, 45 links, sugar, 14", N11°E, 23 links; yellow birch, 10", S35°E, 30 links, and a yellow birch, 10", S70°W, 30 links. 11/06/00 Dave Tlusty, Roy Zubroud, searched for corner, found nothing. Corner "lost" and reset on an extension of a line from the SE corner of Sec. 32, westerly through an original line tree stump found. Distance from the line tree stump proportioned in relation to the distance from said stump to the SE corner of Section 32 (see sketch below).

**Physical description of the monument set:**

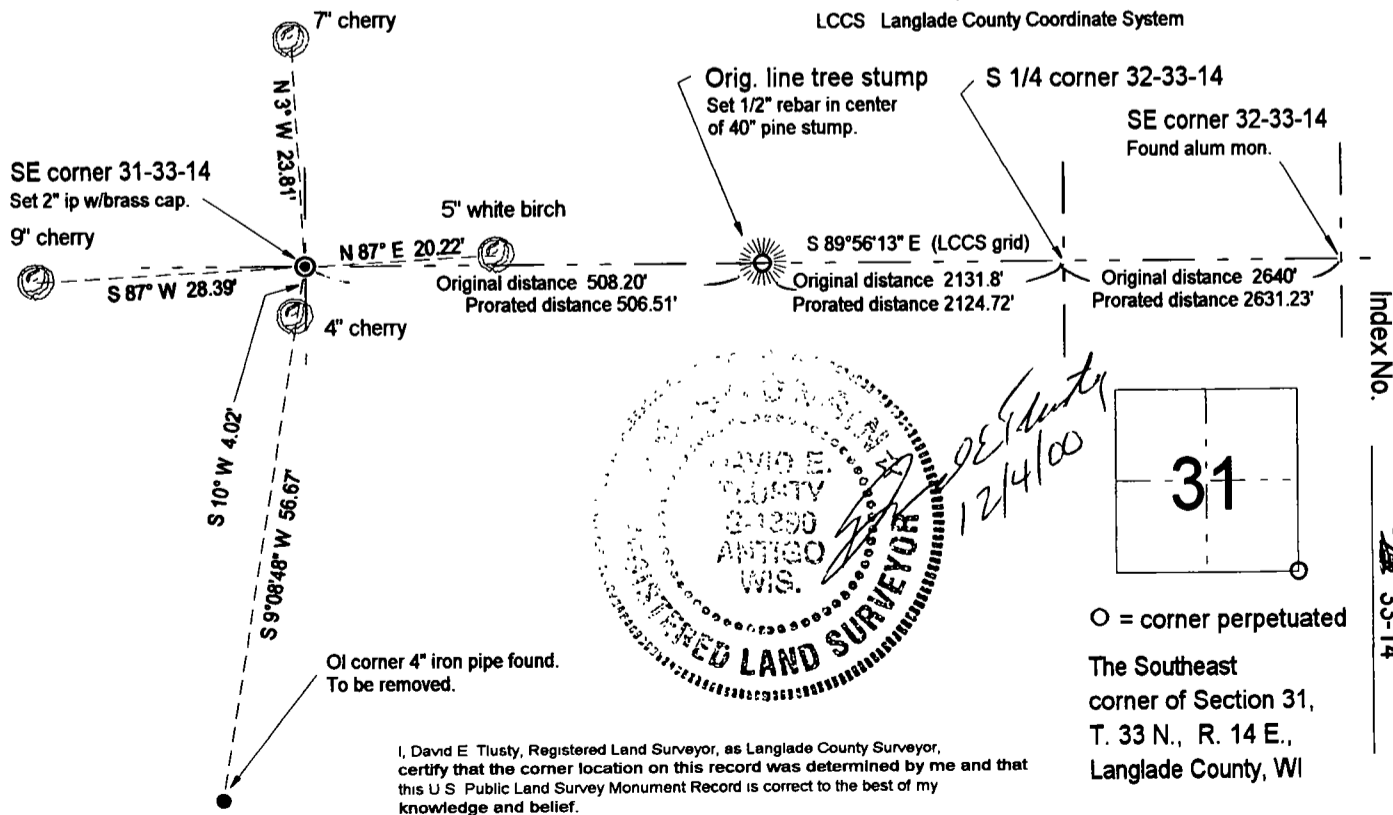
I set a 2" x 30" iron pipe with brass cap for the corner.

**Describe the accessories used to perpetuate the corner. Include a plan view drawing and accessories found/set. Describe measuring point on bearing trees. Show any topographic features that would aid in future recovery of the corner.**

### LEGEND

Field book FB17-107

- 3/4" x 30" rebar set
  - Ol corner 4" iron pipe found
  - ⊙ 2" x 30" iron pipe with brass cap set
  - ▽ RR spike found
  - utility pole
  - + Set white vinyl sign post on north side of monument
- Tie bearings magnetic with hand compass.  
LCCS Langlade County Coordinate System



Index No.

25  
33-14

○ = corner perpetuated  
The Southeast corner of Section 31, T. 33 N., R. 14 E., Langlade County, WI

I, David E. Tlusty, Registered Land Surveyor, as Langlade County Surveyor, certify that the corner location on this record was determined by me and that this U.S. Public Land Survey Monument Record is correct to the best of my knowledge and belief.