

# U. S. PUBLIC LAND SURVEY MONUMENT RECORD

## INSTRUCTIONS:

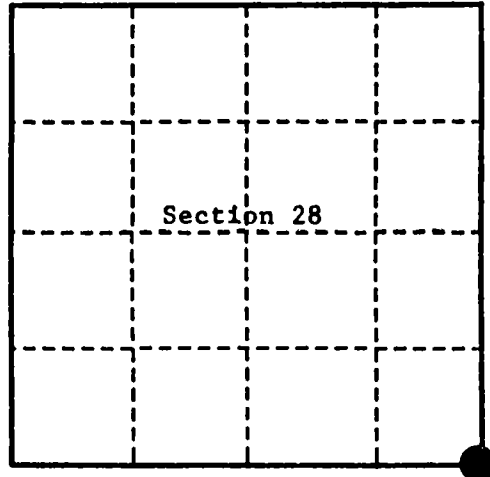
This record shall show the location of the corner and shall include all of the following nine elements (a through i).

- (a) Identify the corner by reference to the U.S. public land survey system.  
 ○ = Corner monument restored.

Section Corner to Sections 27, 28, 33 and 34,  
 T.33 N., R.14 E., Langlade County, Wisconsin.

State Plane Coordinates, Wisconsin Central Zone  
 N - 539346.949  
 E - 2292530.143

Geographic Coordinates  
 N - 45-18-21.036  
 W - 88-44-26.085



- (b) Describe any record evidence, monument evidence, occupational evidence, testimonial evidence or any other material evidence you considered, and whether the monument was found or placed.

Original survey in 1865 by J.L. Nowlin. At 80.00 chains, set wood post and made the following bearing trees: Hemlock, 14" N77°W 15 links (9.90 feet), Hemlock, 10" N19°E 15 links (9.90 feet).

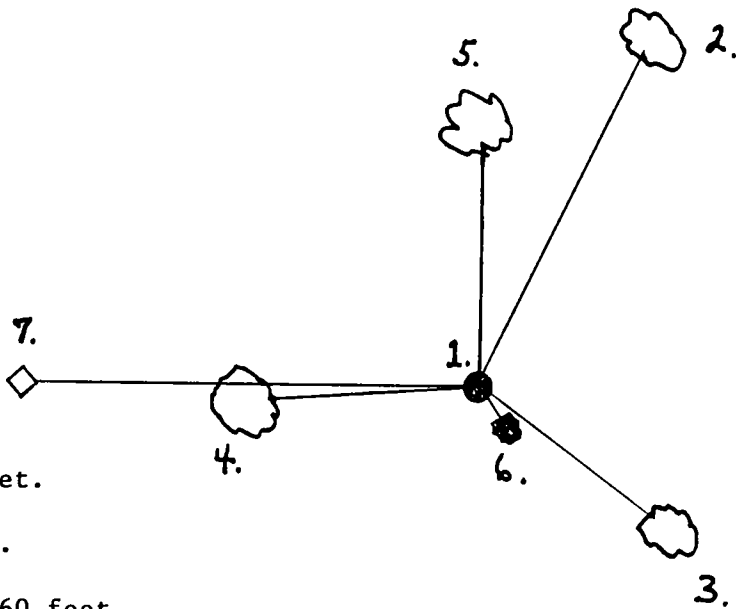
In 1979, Owens Illinois did an approximate survey of Section 34 using compass and chain. At the approximate corner position they set a 6"X6" squared wood post scribed "Appox SC". No bearing trees made.

In 1996, Alan Harrison, R.L.S., located corner area and tied in wood post with G.P.S. control. Found 6" X 6" wood post that O.I. set in 1979. This post bears N 89-43-45 W 34.19 feet from proportionate position. Being wood post found is an approximate position, the corner location was restored by double proportionate measurement south and west 1 mile, east 1 mile and north 1/2 mile. At the corner position set a 2 1/2" X 36" aluminum monument with an aluminum cap stamped to identify corner location.

- (c) In the plan view drawing below, provide reference ties to at least 4 witness monuments, or, if the location is within a municipality, to at least 2 witness monuments. (witness monuments shall be made of concrete, natural stone, iron or other equally durable material.)

- (d) Show a plan view drawing depicting the relevant monuments and reference ties which is sufficient in detail to enable accurate relocation of the corner monument if the corner monument is disturbed. Indicate north.

1. 2 1/2" X 36" aluminum monument stamped to identify corner.
2. Oak, 8" N.39°E. 25.94 feet.
3. Cherry, 8" S.53°E. 12.35 feet.
4. R. Maple, 10" S.87°W. 13.33 feet.
5. R. Maple, 10" North 18.49 feet.
6. Steel sign post, Southeast, 0.60 feet.
7. Wood Post, 6" X 6" N.89°44'W. 43.10 feet.



(e) Describe any material discrepancy between the location of the corner as restored or reestablished and the location of that corner as previously restored or reestablished by distance and direction. Show the discrepancy on the plan view drawing under (d). above. Show the distances between the corner as previously restored or reestablished and (1) the corner as restored or reestablished, and (2) to at least 2 of the witness monuments shown on the drawing—in (d), above.

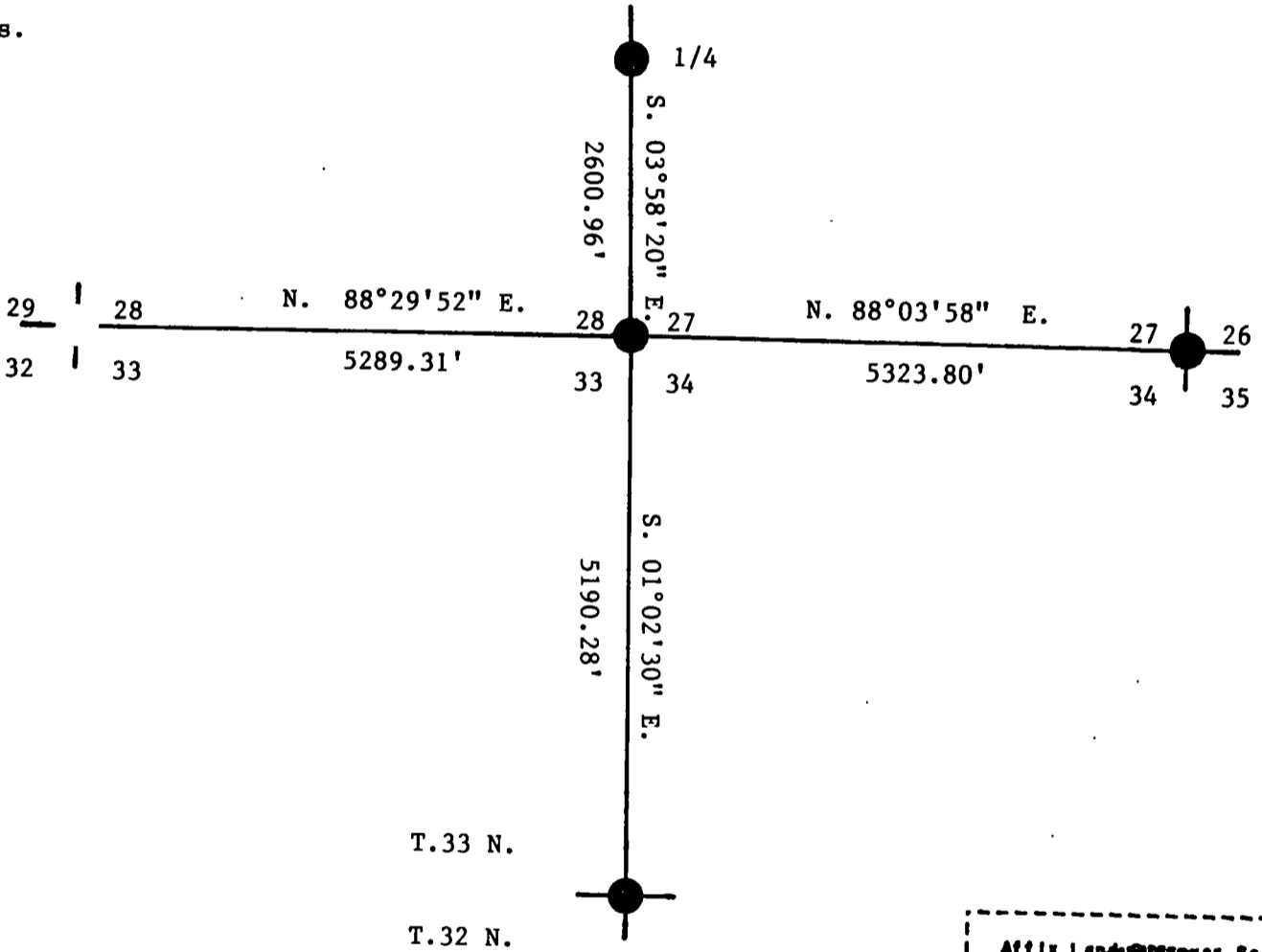
Wood Post scribed "Approx SC". see (d)

(f) Was the corner restored through acceptance of (1) an obliterated evidence location, or, (2) a found perpetuated location?

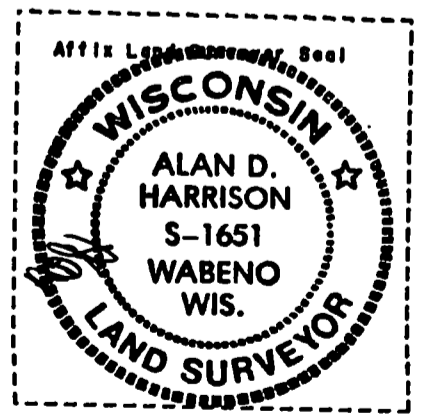
No.

(g & h) Was the corner reestablished through lost corner proportionate methods? If so, show the method, including the directions and distances to other public land survey corners used as evidence or used for proportioning in determining the corner location?

Yes.



T.33 N.  
T.32 N.



(1) I, Alan D. Harrison, R.L.S.  
(type or print name) certify that the corner location shown on this record was determined by me or under my direction and control and that this U.S. Public Land Survey Monument Record is correct and complete to the best of my knowledge and belief.

Alan D. Harrison 1/7/97  
Signature Date

CERTIFICATE READY FOR FILING: Jerry Stecker  
District Ranger