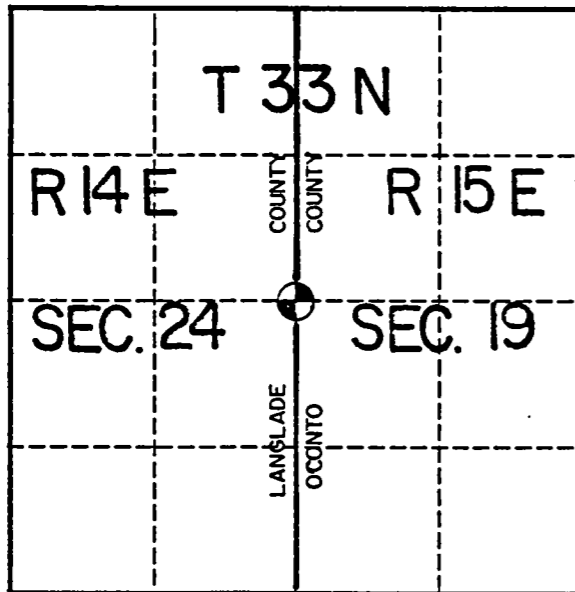


U. S. PUBLIC LAND SURVEY MONUMENT RECORD

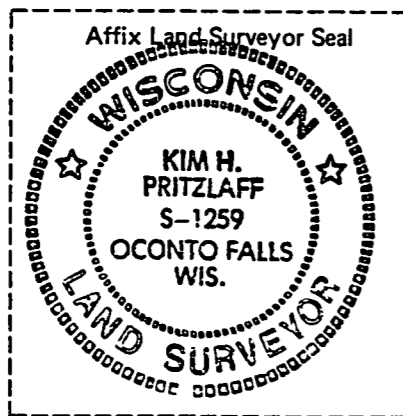
INDEX NO. P-1 P25
33-14

3314242000

QUARTER _____ Corner to Section 19 - 24 T 33 N, R 15 E
(Section/Quarter)



○ = Corner monument restored.



Kim H Pritzlaff Fall of 1988

I, Kim H Pritzlaff (Type or print name) certify that the corner location shown on this record was determined by me or under my direction and control and that this U.S. Public Land Survey Monument Record is correct and complete to the best of my knowledge and belief.

Kim H Pritzlaff
Signature

History of original corner establishment, record evidence, monument evidence, occupational evidence, testimonial evidence or any other material evidence, and what you found and how the monument was set.

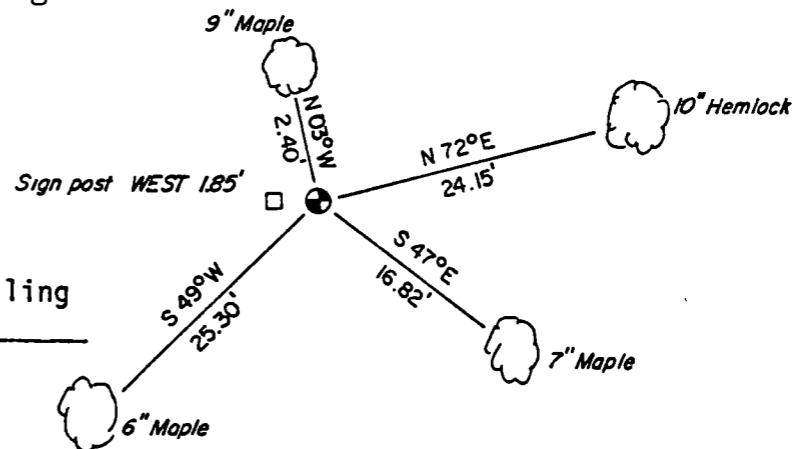
In 1857 Artemas Curtis set this corner using a wood post with the following bearing trees:

Hemlock 12" S87W 18 links
Birch 12" N50E 28 links

I searched the single proportionate position for this corner location and North of this position approximately one chain I found a Sugar blazed on two sides. I found a large Hemlock stump rotted at ground level from which I measured N87E for 18 links and located a post hole with vertical cedar remnants. From this post hole I measured N50E for 28 links and located a depression from which Birch progeny was growing. I monumented the post hole from the bearing tree evidence.

In the plan view drawing below, provide reference ties to at least 4 witness monuments, or, if the location is within a municipality, to at least 2 witness monuments. (Witness monuments shall be made of concrete, natural stone, iron or other equally durable material, except wood other than bearing trees.) Also, show any material discrepancies between the corner restored or re-established and the location of any other previous corner location or occupation.

Set a 2"x 36" aluminum post with the cap stamped for the corner in a mound of stone. Distances are to aluminum nails in the trees shown. Bearings are magnetic.



Certificate ready for filing
[Signature]
District Ranger