

4331424 0000 2017

U.S. PUBLIC LAND SURVEY MONUMENT RECORD

Note: This form is intended and designed to fulfill all requirements of Wisconsin Administrative Code, Chapter A-E 7.08 U.S. Public Land Survey Monument Record (3)(a-i).

(a) CORNER LOCATION
 Cor. of Secs. 19, 24, 25 & 30
 Township 33 North
 Range 14 & 15 East of the 4th P.M.
 Town of Wolf River/Townsend
 County of Langlade/Oconto

WISCORS - Langlade County
 N: 406,287.20 USft
 E: 742,204.70 USft
 Datum: NAD 83(2011)
 GNSS Method: Static
 GNSS Control: WISCORS VRS

	SEC. 24		
	T33N R14E		

(b) HISTORY OF ORIGINAL CORNER ESTABLISHMENT

Original Surveyor: Artemas Curtis

Original Accessories:

Date of Survey Commenced: June, 1857
 Completed: July, 1857

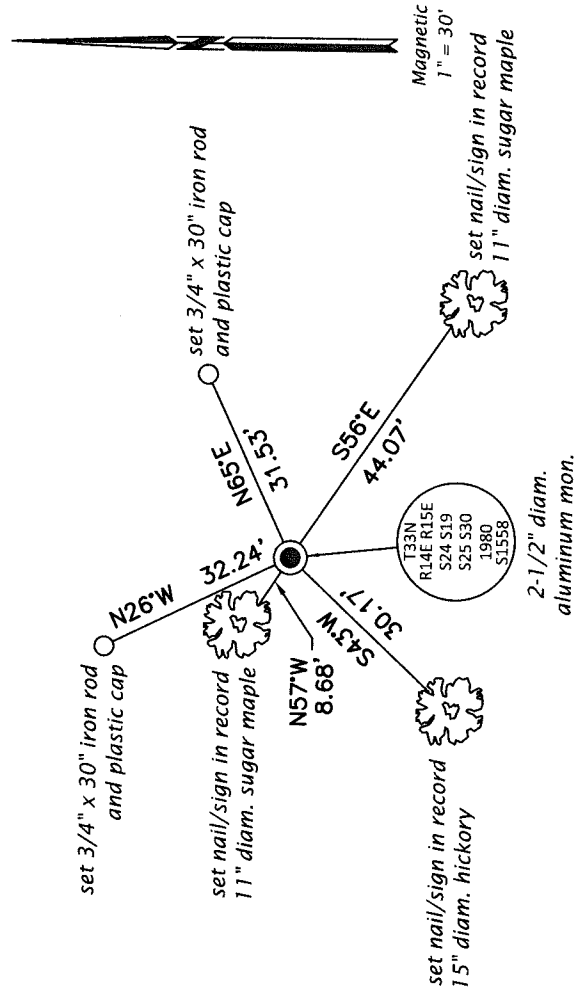
Hemlock 10" S10°W, 27 lks.
 Hemlock 10" N23°W, 24 lks.
 Sugar 12" N68°E, 23 lks.
 Ironwood 8" S65°E, 11 lks.

(b)(f)(g)(h) Description of monument found at this corner and if it was accepted, state all evidence (material, testimonial, occupational, plats, records, other monuments) used as a basis for accepting. If not accepted or if nothing was found, state evidence used as basis for establishing location. If re-established through lost corner proportionate methods, indicate all monuments, distances and directions used to establish. Indicate type of monument and sign post found or set.

This is a perpetuation of a previous USPLS Monument Record by Milo E. Stefan, RLS dated February 14, 1985 and filed in the office of the Langlade County Surveyor. A complete history of the corner can be found on the previous monument record. I accept the previous location as a true and faithful perpetuation or reestablishment of the original corner location and further perpetuate it as follows.

October 28, 2016: I found and accepted the record monument, a 2-1/2" diam. aluminum pipe with a 3-1/4" diam. aluminum cap projecting 2" above a ring of stone. I set a DEEP-1 magnet adjacent to the monument. The record tree at N74°E is now standing dead. I found or established accessories as shown below. A USFS steel sign post bears West, 1.4 ft. I set a white vinyl sign post bearing Southeast, 1.3 ft.

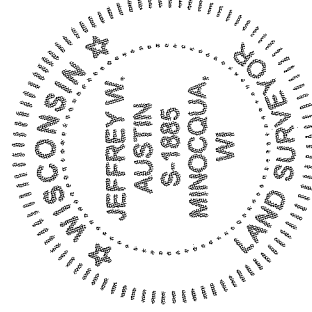
(c)(d)(e) Plan view of corner with ties to at least 4 witness monuments. If in disagreement with previously established corner, show the distances between the two corners and also indicate the ties to the disputed.



(i) I, Jeffrey W. Austin, Professional Land Surveyor No. S-1885, hereby certify that the corner location on this record was determined by me or under my direction and control and that this U.S. Public Land Survey Monument Record is correct and complete to the best of my knowledge and belief.

[Handwritten Signature]
 Signature

May 6, 2017
 Date



R 25