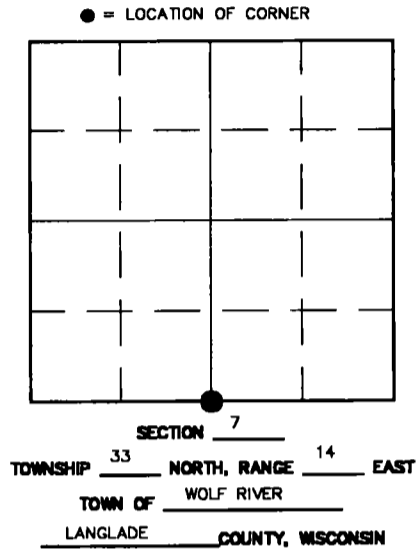


3314070020

# U.S. PUBLIC LAND SURVEY MONUMENT RECORD

## HISTORY OF ORIGINAL CORNER ESTABLISHMENT AND SUBSEQUENT RESTORATION AND DESCRIPTION OF ANY RECORD, MONUMENT OCCUPATIONAL, TESTIMONIAL OR OTHER EVIDENCE CONSIDERED:

THE ORIGINAL QUARTER CORNER WAS ESTABLISHED IN 1865 BY JAMES NOWLIN. ORIGINAL BEARING TREES: BIRCH 14° SSE 40LKS., BIRCH 10° N59E 50LKS. 12/28/99 CHARLEY BRINKMEIER AND GERRY BAHAR SEARCHED ALONG A BLAZE LINE FROM AN OWENS-ILLINOIS 1960'S SURVEY, WITH NO RECORD OF ANYTHING BEING SET AT THE SOUTH 1/4. (MAP # 10382 IN LANGLADE CO. SURVEYOR'S OFFICE) FOUND NOTHING. WE SET A 2" X 30" BRASS CAPPED LANGLADE CO. MONUMENT ON THE BLAZE LINE AT A PRORATED DISTANCE ACCORDING TO THE ORIGINAL GOV'T NOTES.

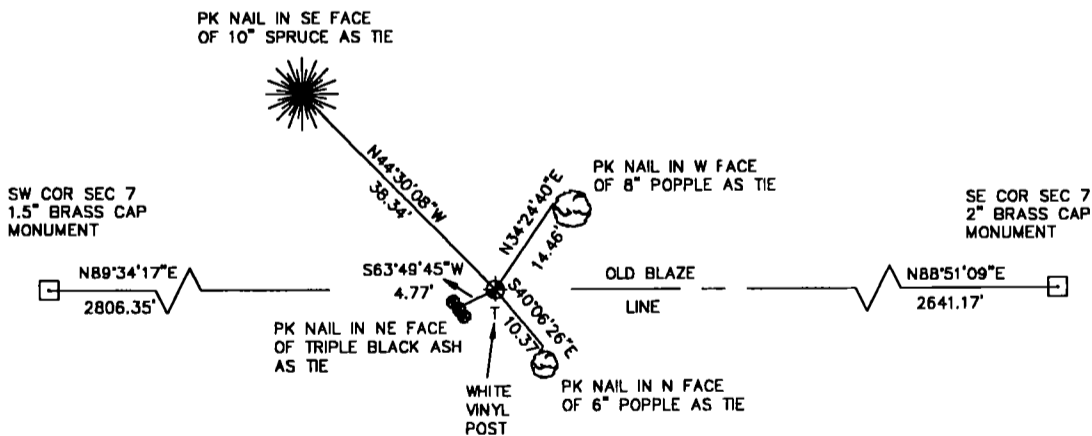


### CORNER WAS: (CHECK ALL THAT APPLY)

- RESTORED THROUGH ACCEPTANCE OF AN OBLITERATED EVIDENCE LOCATION
- RESTORED THROUGH ACCEPTANCE OF A FOUND PERPETUATED LOCATION
- CONSIDERED A LOST CORNER AND REESTABLISHED THROUGH LOST CORNER PROPORTIONATE METHODS (INCLUDE A PLAN VIEW DRAWING SHOWING DISTANCES AND DIRECTIONS TO OTHER PUBLIC LAND SURVEY CORNERS USED FOR PROPORTIONING AND DETERMINING THE CORNER LOCATION)
- RESTORED OR REESTABLISHED IN A LOCATION THAT DIFFERS FROM A PREVIOUS RESTORATION OR REESTABLISHMENT (INCLUDE A PLAN VIEW DRAWING AND INDICATE WHAT WAS SET AND/OR FOUND)
- CHECK IF THERE IS ADDITIONAL INFORMATION ON BACK

DESCRIBE THE MONUMENT AND ACCESSORIES USED TO PERPETUATE THE LOCATION OF THE CORNER. (INCLUDE A PLAN VIEW DRAWING AND INDICATE WHAT WAS SET AND/OR FOUND) ALSO INCLUDE FOUR TIES TO THE SECTION CORNER AND DESCRIPTION OF THE TIES.

⊕ SET 2" X 30" BRASS CAPPED LANGLADE CO. MONUMENT

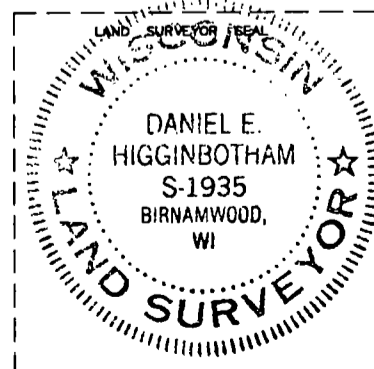


DANIEL E. HIGGINBOTHAM

(type or print name) CERTIFY THAT THE CORNER LOCATION SHOWN ON THIS RECORD WAS DETERMINED BY ME OR UNDER MY DIRECTION AND CONTROL AND THAT THIS U.S. PUBLIC LAND SURVEY MONUMENT RECORD IS CORRECT AND COMPLETE TO THE BEST OF MY KNOWLEDGE AND BELIEF.

*Daniel E. Higginbotham*  
SIGNATURE

2-3-2000  
DATE



INDEX NO. 33-14-53