

CERTIFIED LAND CORNER RESTORATION

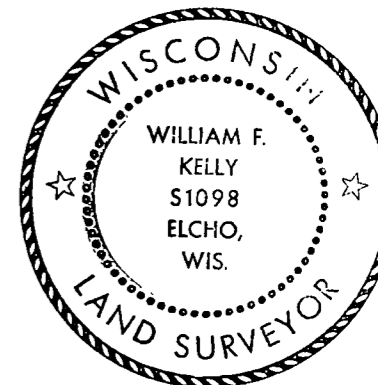
Index No. W-21

State of Wisconsin }  
County of LANG LADE } ss.

History of original corner establishment:  
CORNER LOCATED FROM OWENS-ILLINOIS SUBDIVISION SURVEY.

I WILLIAM F. KELLY, do hereby certify that on the 28<sup>TH</sup> day of OCTOBER, 1977, I found evidence of the N 1/8 corner of SECTIONS 35 & 36 Township 33, North, Range 13E, Fourth Principal Meridian, as described hereon; and that from this evidence I established a new monument and accessories as described hereon to perpetuate the original location of this corner.

Description of corner evidence found:  
4x4 POST AND TWO BEARING TREES.

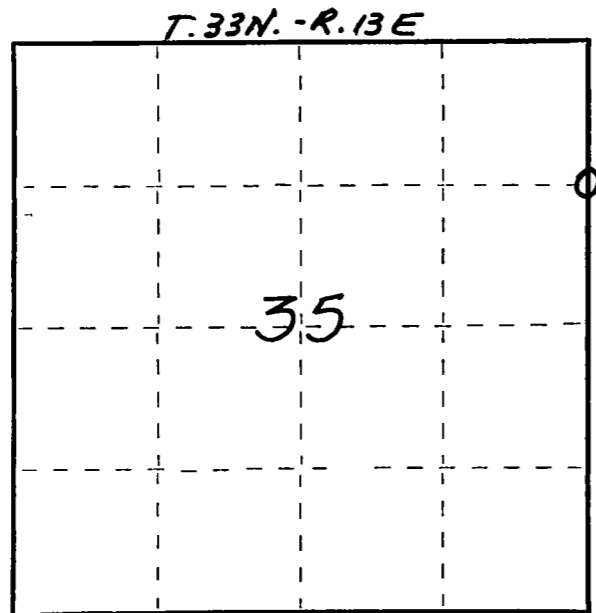
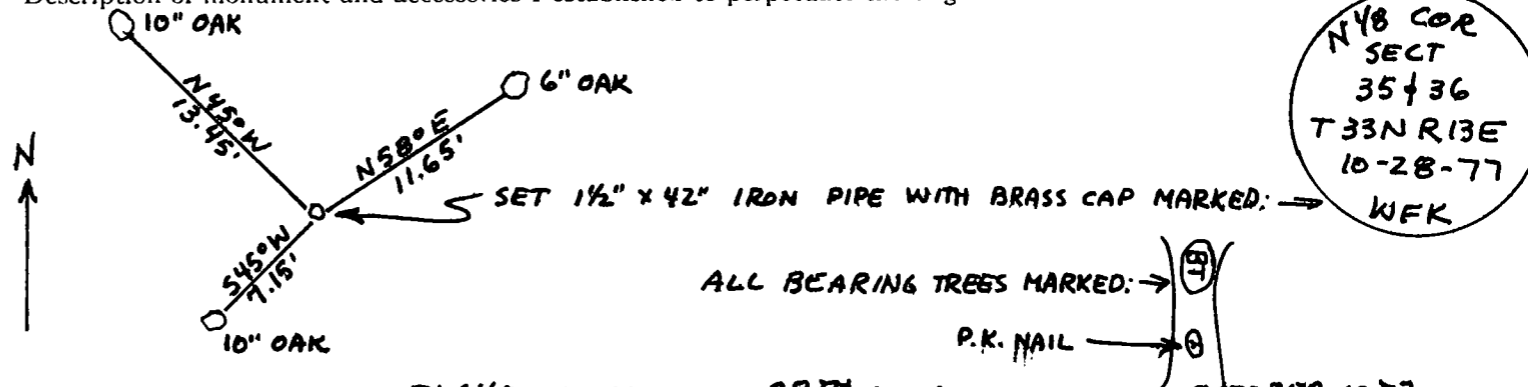


*William F. Kelly*

Resident witnesses:

.....  
.....  
.....

Description of monument and accessories I established to perpetuate the original location of this corner.



○ = Corner monument restored.

Dated at ELCHO, Wis., this 28<sup>TH</sup> day of OCTOBER, 1977.

Signature William F. Kelly Title REGISTERED LAND SURVEYOR Registration No. S1098  
(County Surveyor, Registered Land Surveyor, or other duly authorized official)

Office of Register of Deeds, County of ....., I hereby certify that the within instrument was filed in this office for record on the ..... day of ....., 19..... at ..... o'clock ..... M.

.....  
(Register of Deeds)

By..... Deputy