

CERTIFIED LAND CORNER RESTORATION

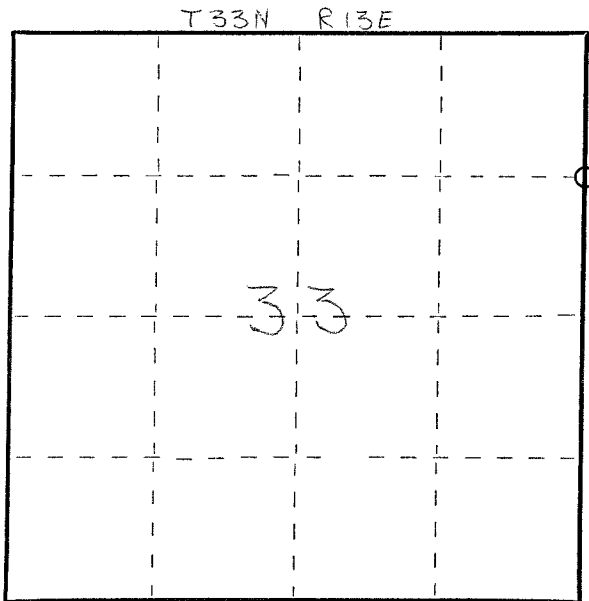
Index No. W-13

4331333 3000 1978

State of Wisconsin }
County of LANGLADE } ss.

I WESLEY J. TRADEWELL, do hereby certify that on the 19TH day of OCTOBER, 1978, I found evidence of the S.E. corner of NE 1/4, NE 1/4, SECTION 33 Township 33, North, Range 13, Fourth Principal Meridian, as described hereon; and that from this evidence I established a new monument and accessories as described hereon to perpetuate the original location of this corner.

Resident witnesses:

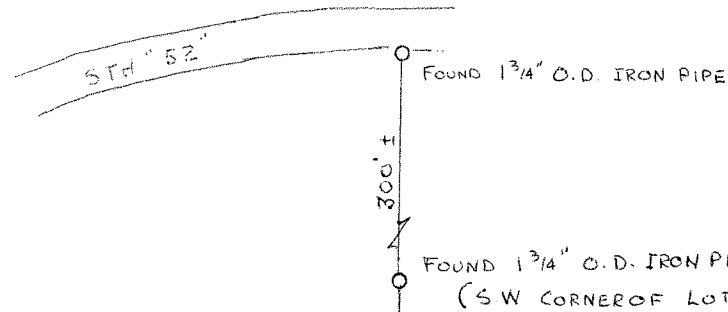


○ = Corner monument restored.

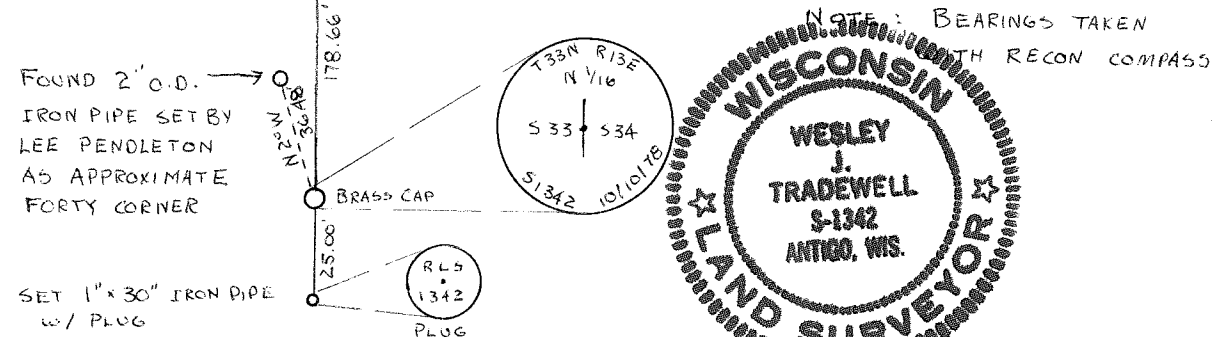
History of original corner establishment:

WE SET CORNER AT MIDPOINT BETWEEN THE NE CORNER OF SECTION 33 AND THE E 1/4 CORNER OF SECTION 33. (USED TOM ARNOTT'S DISTANCE FROM MAP OF PRIEM ESTATES.) SET CORNER USING WEST LINE OF LOT 6, PRIEM ESTATES, FOR LINE (N-S 1/4 LINE), SET CORNER 178.66' SOUTH OF SW CORNER OF LOT 6.

Description of corner evidence found:



Description of monument and accessories I established to perpetuate the original location of this corner.



Dated at ANTIGO, Wis., this 20th day of OCTOBER, 1978

Signature Wesley J. Tradewell Title REGISTERED LAND SURVEYOR Registration No. 1342
(County Surveyor, Registered Land Surveyor, or other duly authorized official)

Office of Register of Deeds, County of _____, I hereby certify that the within instrument was filed in this office for record on the _____ day of _____, 19____ at _____ o'clock _____ M.

(Register of Deeds)

By _____ Deputy