

CERTIFIED LAND CORNER RESTORATION

32-13

Index No. A-9?

State of Wisconsin }  
County of Lacrosse } ss.

History of original corner establishment:

I Raymond Hallisy, do hereby certify that on the 21st day of April, 1973, I found evidence of the Section corner of 4, 5, 32, & 33 Township 32 & 33, North, Range 13E, Fourth, Principal Meridian, as described hereon; and that from this evidence I established a new monument and accessories as described hereon to perpetuate the original location of this corner.

Description of corner evidence found:

Squared stake marked S4, S5, S32, S33  
Well point  
Angle iron  
BT HAND MAPLE 8" S57W 22.8 FT

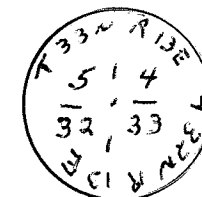
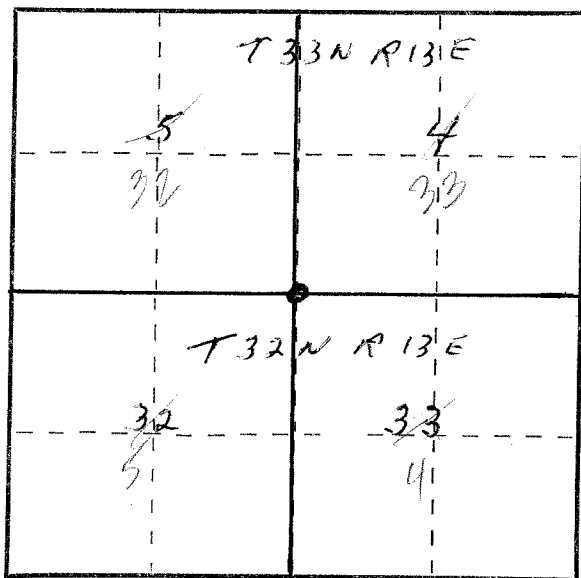
*SEE ALSO  
29 33-13*

Resident witnesses:

Description of monument and accessories I established to perpetuate the original location of this corner.

Replaced well point with 1 1/2" pipe with BRASS cap  
Rock mound  
MARKED  
NEW BT  
HARD MAPLE 14" N38W 39.2 FT

FORM 985 H. C. MILLER CO., MILWAUKEE



Dated at Antigo, Wis., this 21st day of April, 1973.

Signature Raymond Hallisy Title Reg. Land Surveyor Registration No. 5-685  
(County Surveyor, Registered Land Surveyor or other duly authorized official)

Office of Register of Deeds, County of \_\_\_\_\_, I hereby certify that the within instrument was filed in this office for record on the \_\_\_\_\_ day of \_\_\_\_\_, 19\_\_\_\_ at \_\_\_\_\_ o'clock \_\_\_\_\_ M.

(Register of Deeds)

By \_\_\_\_\_ Deputy

○ = Corner monument restored.