

CERTIFIED LAND CORNER RESTORATION

Index No. V-3

State of Wisconsin }
County of LANGLADE } ss.

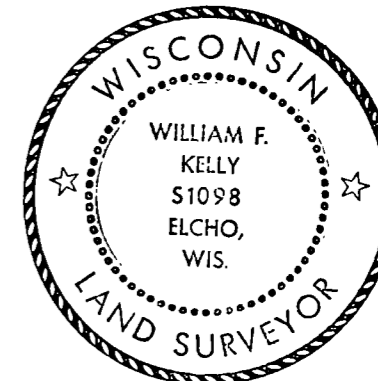
I, WILLIAM F. KELLY, do hereby certify that on the 8th day of NOVEMBER, 1982, I found evidence of the S. 1/4 corner of SECT. 30 Township 33, North, Range 13 EAST, Fourth Principal Meridian, as described hereon; and that from this evidence I established a new monument and accessories as described hereon to perpetuate the original location of this corner.

Resident witnesses:

.....
.....
.....

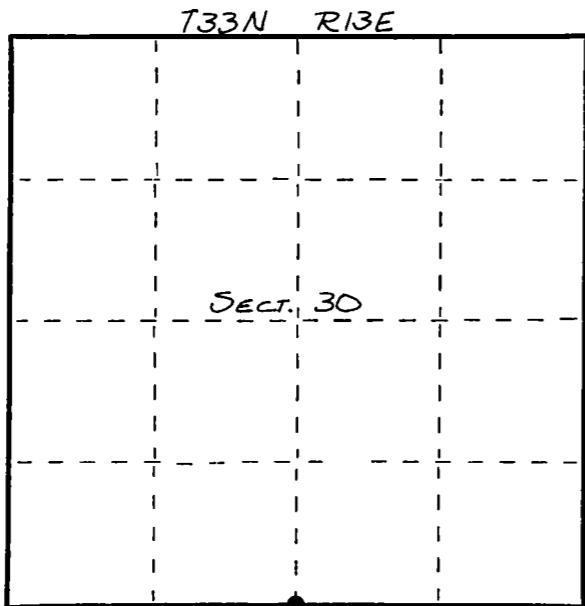
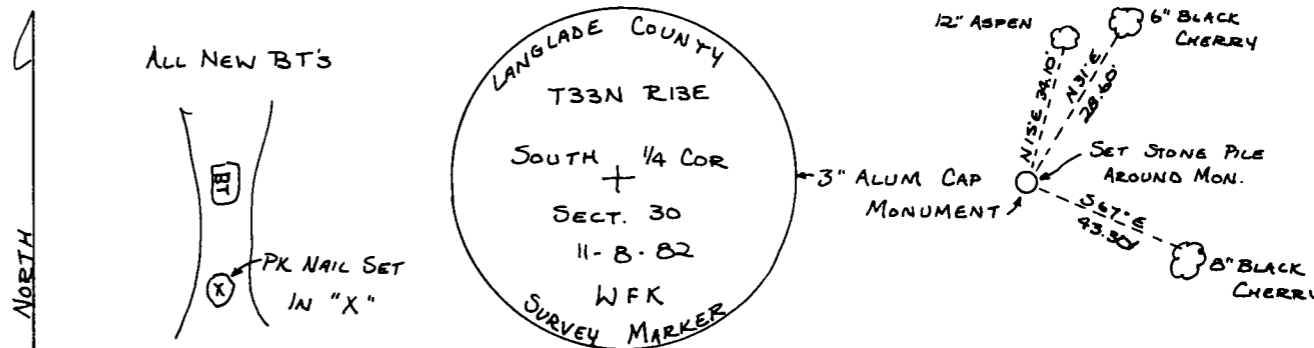
History of original corner establishment:
ORIGINAL CORNER ESTABLISHED BY
JAMES L. NOWLIN IN MAY, 1865.

Description of corner evidence found:
SET 3" x 42" ALUM. CAP MONUMENT.
CORNER ESTABLISHED FROM O.I. CONTROL
SURVEY OF SECT. 31, T33N, R13E.



William F. Kelly

Description of monument and accessories I established to perpetuate the original location of this corner.



○ = Corner monument restored.

Dated at ELCHO, Wis., this 8th day of NOVEMBER, 1982.

Signature William F. Kelly Title COUNTY SURVEYOR Registration No. 1098
(County Surveyor, Registered Land Surveyor, or other duly authorized official)

Office of Register of Deeds, County of, I hereby certify that the within instrument was filed in this office for record on the day of, 19..... at o'clock M.

.....
(Register of Deeds)

By Deputy