

LANGLADE COUNTY U.S. PUBLIC LAND CORNER RESTORATION

The quarter corner common to Sections 29 & 32, T. 33 N., R. 13 E., Langlade County, WI.

Corner was: (check all that apply)

- Restored through acceptance of an obliterated evidence location.
- Restored through acceptance of a found perpetuated location.
- Determined to be lost and re-established through proportionate methods.
 - Show bearings and distances to PLSS corners used for proportioning, and show original distances).
 - Restored/recovered/re-established in a location that differs from a previously established position.
 - (Show difference in plan view below).
- Check here if additional information is shown on the reverse side of this form.

4331329 0020 2019

Describe record evidence, recovered physical evidence, occupational evidence, testimonial evidence and all other evidence considered in the recovery/restoration of the corner.

The original corner was established in 1865 by J. L. Nowlin. Original bearing trees: hemlock, 30", N21 E, 71 links and a sugar, 8", S62E, 30 links. Maps 10387 and 10389 in the County Surveyor records are maps prepared by Owens Illinois and show iron pipes of unknown origin along the line between sections 29 & 32. In 1971, Ray Hallissy found a "wood post scribed S32 S29 1/4 and 2" iron pipe along side". He set a 4" pipe with brass cap in cement and marked BT's: red maple, 8", S82W, 6.3 ft and a hemlock, 10", S52E, 6.3 ft. 04/28/14 D. Tlusty found monument loose in ground and leaning to the NW. Straightened monument and made solid with rocks. Mon. found is 4" dia concrete with 4" brass cap, top of monument up 0.3'. Accepted monument as the best evidence of the corner. Found and remarked two BT's and added two BT's as shown below.

Physical description of the monument set:

I straightened the existing monument as described above.

I set a white vinyl sign post 0.5 ft south of the corner monument.

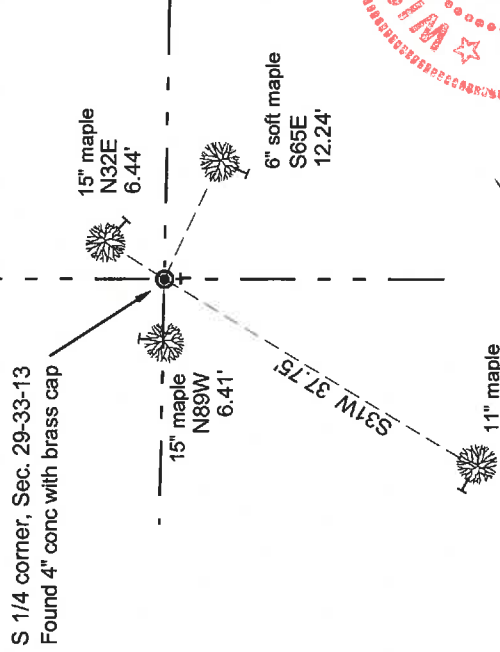
Describe the accessories used to perpetuate the corner. Include a plan view drawing and accessories found/set. Describe measuring point on bearing trees. Show any topographic features that would aid in future recovery of the corner.

Langlade County Coordinates NAD83(2011)
 Northing(Y) Easting(X) Description
 400760.527 686505.302 3x rt ave 4"bc 1/4cor

LEGEND

- conc. mon with brass cap found
- white vinyl sign post set
- Trees measured to an aluminum nail in the side of the tree shown T. Bearing trees painted blue and have Bearing Tree sign facing the corner.

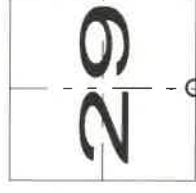
FB 21-95



David E. Tlusty
 9/9/19

Index No. _____

V 7 33-13



O = corner perpetuated

The South 1/4 corner of Section 29,

T. 33 N., R. 13 E.,
 Langlade County, WI

I, David E. Tlusty, Registered Land Surveyor, as Langlade County Surveyor, certify that the corner location on this record was determined by me and that this U.S. Public Land Survey Monument Record is correct to the best of my knowledge and belief.