

CERTIFIED LAND CORNER RESTORATION

Index No. T-17

State of Wisconsin }  
County of LANGLADE, } ss.

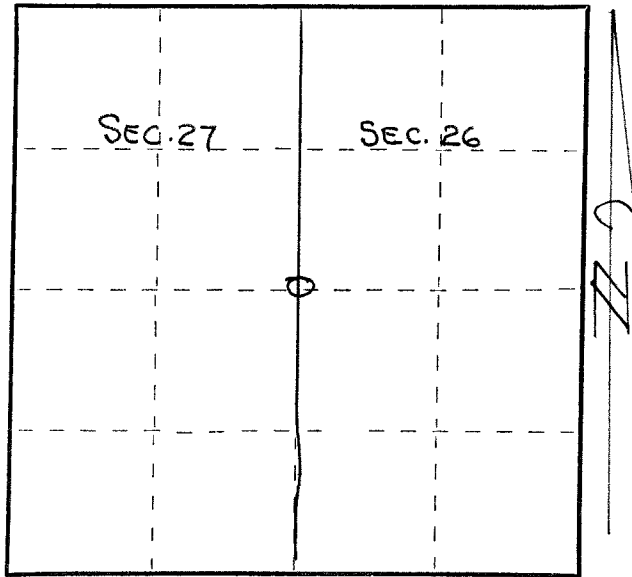
I, Wm. F. Kelly, do hereby certify that on the 8<sup>TH</sup> day of OCTOBER, 1974, I found evidence of the 1/4 SECTION corner of SECS. 26 & 27 Township 33, North, Range 13 EAST, Fourth Principal Meridian, as described hereon; and that from this evidence I established a new monument and accessories as described hereon to perpetuate the original location of this corner.

Resident witnesses:

ELMER LARZELERE

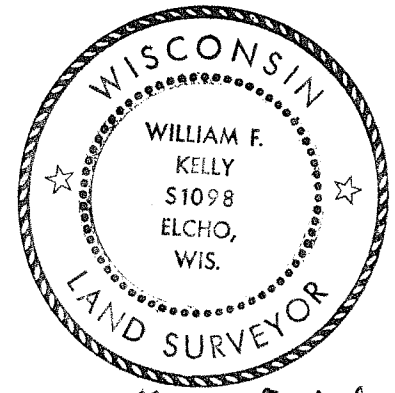
433/527 3000

FORM 985 H. C. MILLER CO., MILWAUKEE



○ = Corner monument restored.

History of original corner establishment:



*William F. Kelly*

Description of corner evidence found:

FOUND OLD WOOD SQD STAKE W/ POINTED TOP & 1" SOLID IRON ROD IDENTIFIED BY LARZELERE AS 1/4 COR.

I. Rod SQD  
O Stake  
SET 2" IRON PIPE

Description of monument and accessories I established to perpetuate the original location of this corner.

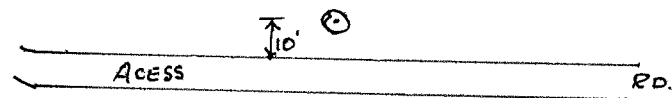
SET 2" IRON PIPE W/ BRASS CAP

MKD 1/4 SEC COR.  
27 | 26

T33N R13E  
W.F.K.

ALL TREES BLAZED CHEST HIGH  
AND AT BASE  
SCRIBED NBT

- 1= CEDAR 12 S17E 56.5'
- 2= SPRUCE 5 N25E 20.6'
- 3= TAMARAC DOUBLE 8 N52E 33.65'



Dated at ELCHO, Wis., this 8<sup>TH</sup> day of OCTOBER, 1974.

Signature \_\_\_\_\_ Title REG. LAND SURVEYOR Registration No. S-1098  
(County Surveyor, Registered Land Surveyor, or other duly authorized official)

Office of Register of Deeds, County of \_\_\_\_\_, I hereby certify that the within instrument was filed in this office for record on the \_\_\_\_\_ day of \_\_\_\_\_, 19\_\_\_\_ at \_\_\_\_\_ o'clock \_\_\_\_\_ M.

(Register of Deeds)

By \_\_\_\_\_ Deputy