

CERTIFIED LAND CORNER RESTORATION

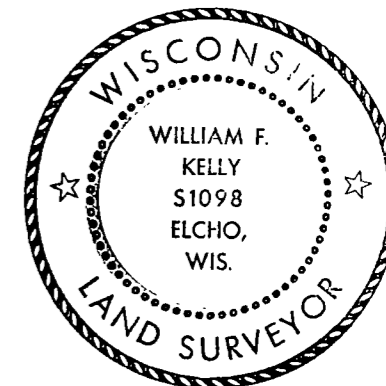
Index No. V-21

State of Wisconsin }
County of LANGLADE } ss.

History of original corner establishment:
CORNER LOCATED FROM OWENS-ILLINOIS SURVEY NOTES.

I WILLIAM F. KELLY, do hereby certify that on the 28TH day of OCTOBER, 1977, I found evidence of the SECTION corner of SECTIONS 26, 25, 35 & 36 Township 33, North, Range 13E, Fourth Principal Meridian, as described hereon; and that from this evidence I established a new monument and accessories as described hereon to perpetuate the original location of this corner.

Description of corner evidence found:
4x4 SCRIBED POST AND TWO BEARING TREES.

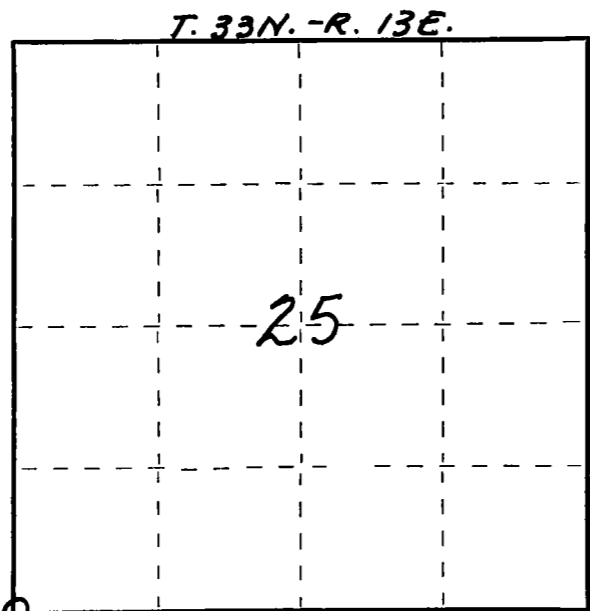
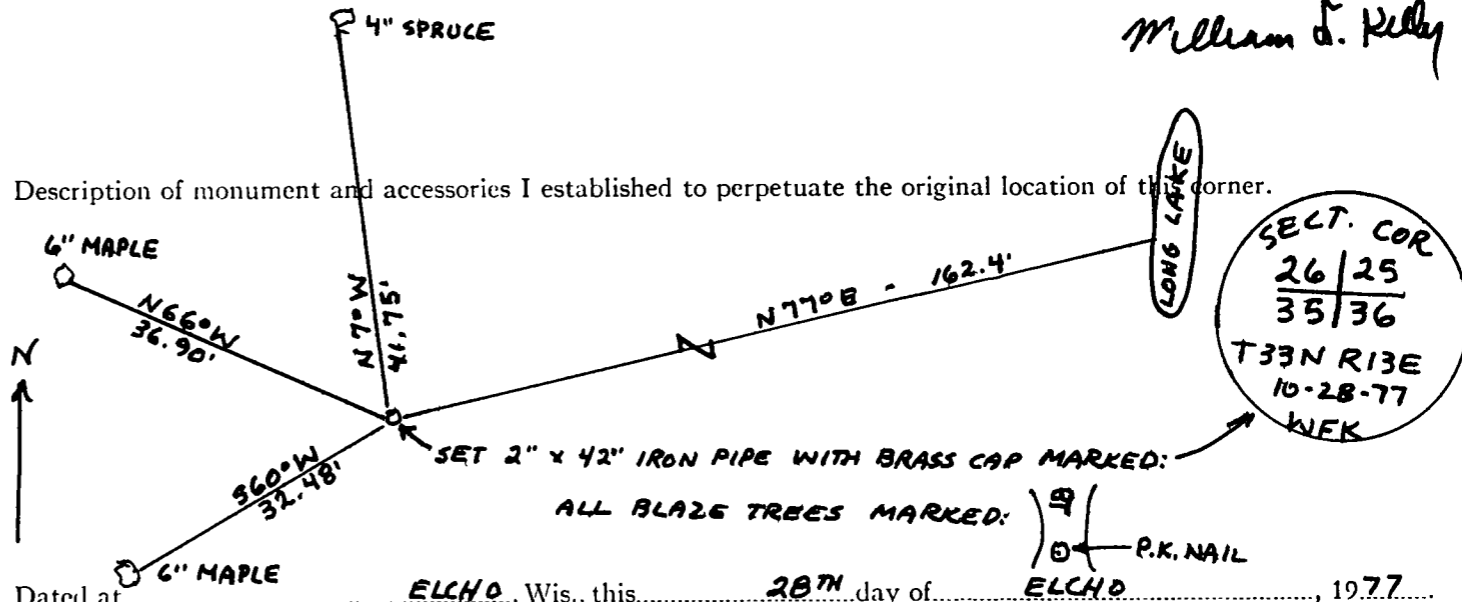


William F. Kelly

Resident witnesses:

.....
.....
.....

Description of monument and accessories I established to perpetuate the original location of the corner.



○ = Corner monument restored.

Dated at ELCHO, Wis., this 28TH day of ELCHO, 1977.

Signature William F. Kelly Title REGISTERED LAND SURVEYOR Registration No. 51098
(County Surveyor, Registered Land Surveyor, or other duly authorized official)

Office of Register of Deeds, County of....., I hereby certify that the within instrument was filed in this office for record on the.....day of....., 19..... at.....o'clock..... M.

.....
(Register of Deeds)

By.....Deputy