

CERTIFIED LAND CORNER RESTORATION

Index No. S-1

35-13

State of Wisconsin }
County of Langlade } ss.

I, Raymond J. Hallisy, do hereby certify that on the 11th day of December, 1982, I found evidence of the N 1/16 corner of Section 25 & 30 Township 33, North, Range 12E & 13E, Fourth Principal Meridian, as described hereon; and that from this evidence I established a new monument and accessories as described hereon to perpetuate the original location of this corner.

History of original corner establishment:

Corner set in the 1930 resurvey.

Description of corner evidence found:

Found wood post down, Scribed N 1/16, point intact.

Resident witnesses:

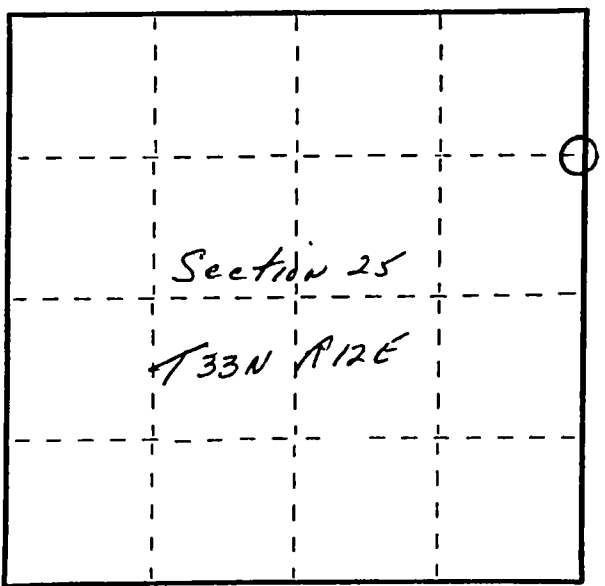
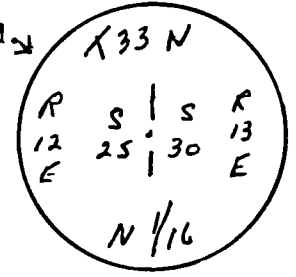
.....
.....
.....

Description of monument and accessories I established to perpetuate the original location of this corner.

Set 1 1/2" iron pipe with aluminum cap, marked T 33 N

New PT's

| | | | |
|-----|------------|------|----------|
| 3" | Hard Maple | N82E | 8.3 lks |
| 30" | Hard Maple | N80W | 37.6 lks |
| 12" | Hard Maple | N57W | 42.9 lks |



○ = Corner monument restored.

Dated at Antigo, Wis., this 11th day of December, 1982

Signature Raymond J. Hallisy Title Land Surveyor Registration No. S-685
(County Surveyor, Registered Land Surveyor, or other duly authorized official)

Office of Register of Deeds, County of....., I hereby certify that the within instrument was filed in this office for record on the.....day of....., 19..... at.....o'clock..... M.

.....
(Register of Deeds)

By.....Deputy

FORM 985 R. C. MILLER CO., MILWAUKEE