

CERTIFIED LAND CORNER RESTORATION

Index No. P-1

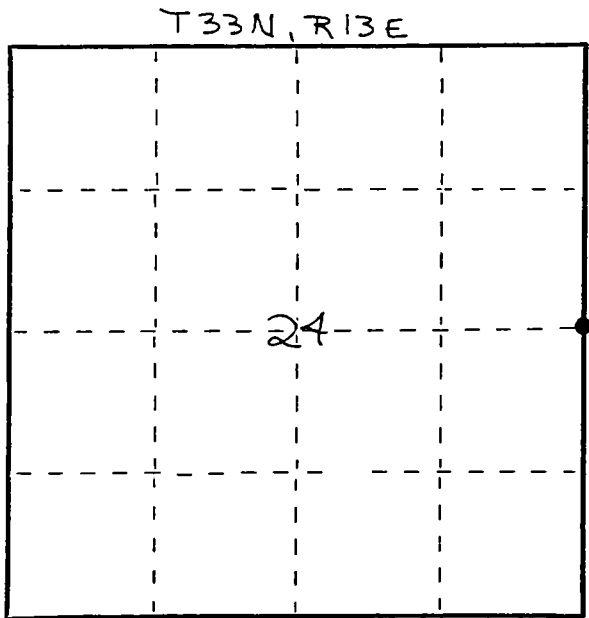
State of Wisconsin }
 County of LANGLADE } ss.

I WILLIAM F. KELLY, do hereby certify that on the 26th day of DECEMBER, 19 80, I found evidence of the EAST 1/4 corner of SEC. 24 Township 33, North, Range 13 EAST, Fourth Principal Meridian, as described hereon; and that from this evidence I established a new monument and accessories as described hereon to perpetuate the original location of this corner.

Resident witnesses:

.....

FORM 0175 - WISCONSIN SURVEYOR

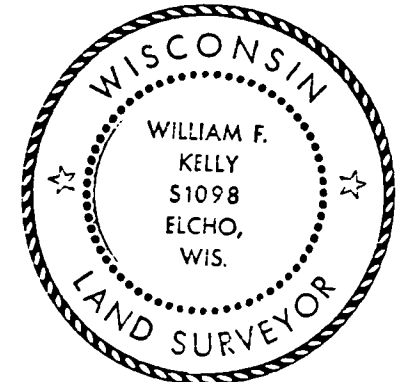


○ = Corner monument restored.

History of original corner establishment:
 ORIGINAL CORNER ESTABLISHED
 BY JAMES NOWLIN IN 1865.

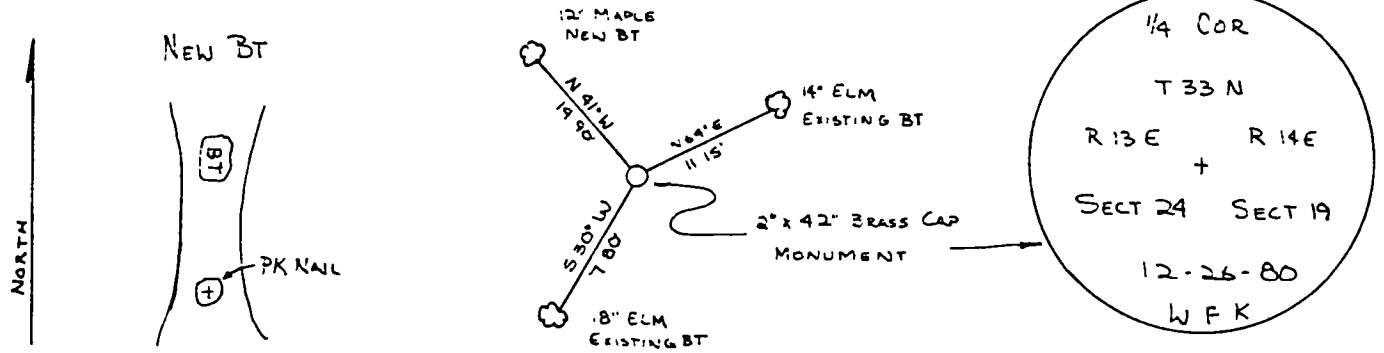
Description of corner evidence found:

FOUND A 1" IRON PIPE AND A 4" x 4" WOODEN POST -
 SET A 2" x 42" BLACK IRON PIPE WITH BRASS CAP MON.



William F. Kelly

Description of monument and accessories I established to perpetuate the original location of this corner.



Dated at ELCHO, Wis., this 26th day of DEC, 19 80

Signature William F. Kelly Title COUNTY SURVEYOR Registration No. 1098
 (County Surveyor, Registered Land Surveyor, or other duly authorized official)

Office of Register of Deeds, County of, I hereby certify that the within instrument was filed in this office for record on the day of, 19..... at o'clock M.

.....
 (Register of Deeds)

By.....Deputy