

CERTIFIED LAND CORNER RESTORATION

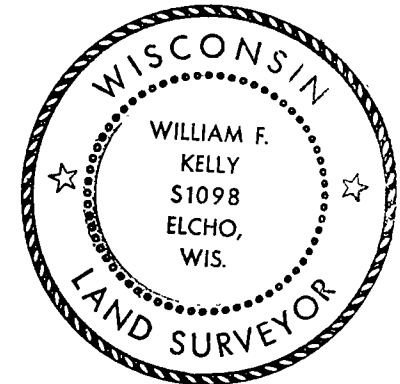
Index No. R-23

State of Wisconsin }
 County of LANGLADE } ss.

History of original corner establishment:
LOCATED 1/4 SECTION CORNER 24
BY OWENS-ILLINOIS IN 1974. 25 T.33N.-R.13E. FROM SECTION SUBDIVISION

I WILLIAM F. KELLY, do hereby certify that on the 4TH day of NOVEMBER, 1977, I found evidence of the 1/4 SECTION corner of SECTIONS 24 & 25 Township 33, North, Range 13E, Fourth Principal Meridian, as described hereon; and that from this evidence I established a new monument and accessories as described hereon to perpetuate the original location of this corner.

Description of corner evidence found:
FOUND IRON PIPE AND TWO MARKED BEARING TREES.



William F. Kelly

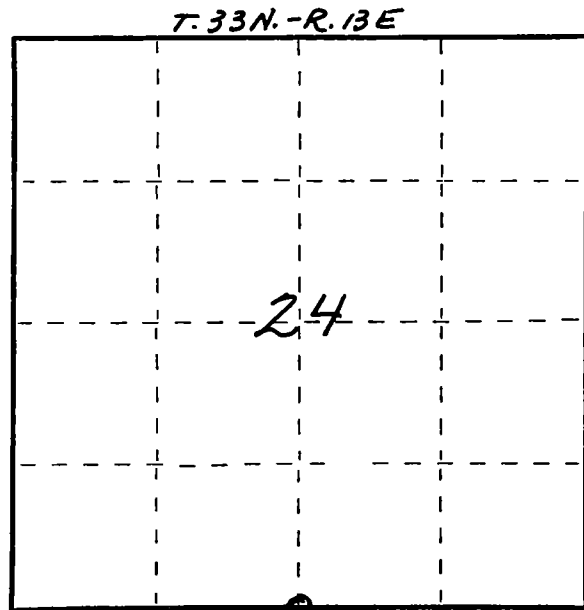
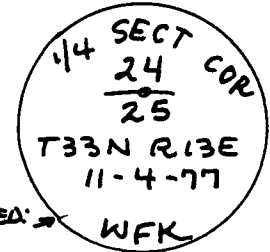
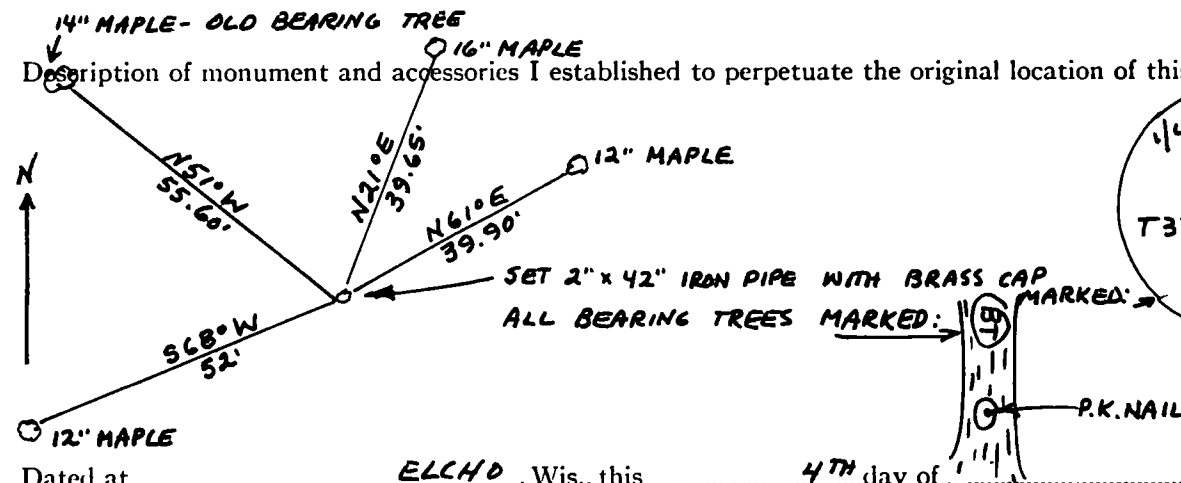
Resident witnesses:

.....

.....

.....

Description of monument and accessories I established to perpetuate the original location of this corner.



○ = Corner monument restored.

Dated at ELCHO, Wis., this 4TH day of NOVEMBER, 1977.

Signature William F. Kelly Title REGISTERED LAND SURVEYOR Registration No. 51098
 (County Surveyor, Registered Land Surveyor, or other duly authorized official)

Office of Register of Deeds, County of, I hereby certify that the within instrument was filed in this office for record on the day of, 19..... at o'clock M.

.....
 (Register of Deeds)

By Deputy