

CERTIFIED LAND CORNER RESTORATION

Index No. R-19

State of Wisconsin }  
County of LANGLADE } ss.

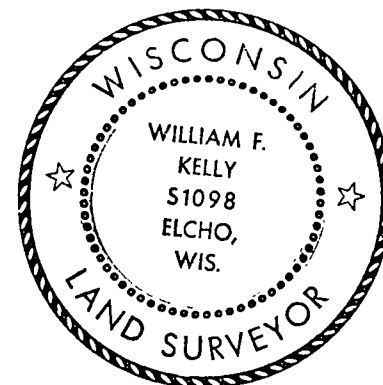
I WILLIAM F KELLY, do hereby certify that on the 26<sup>th</sup> day of DECEMBER, 19 80, I found evidence of the NORTH 1/4 corner of SEC. 26 Township 33, North, Range 13 EAST, Fourth Principal Meridian, as described hereon; and that from this evidence I established a new monument and accessories as described hereon to perpetuate the original location of this corner.

Resident witnesses:

JOWENS ILLINOIS FORESTRY  
DEPT.

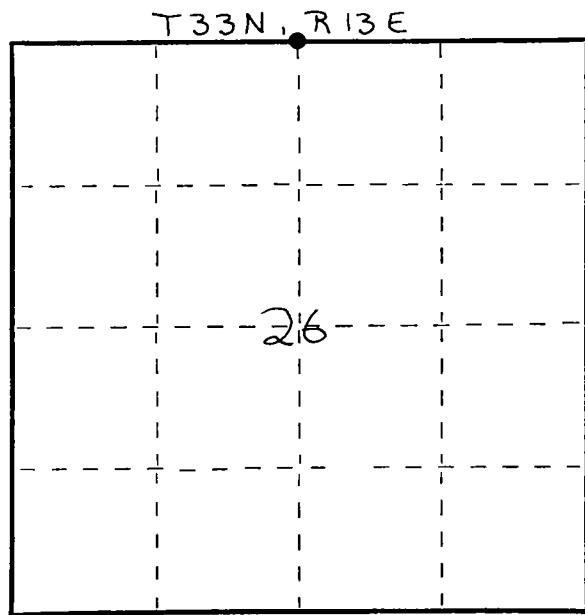
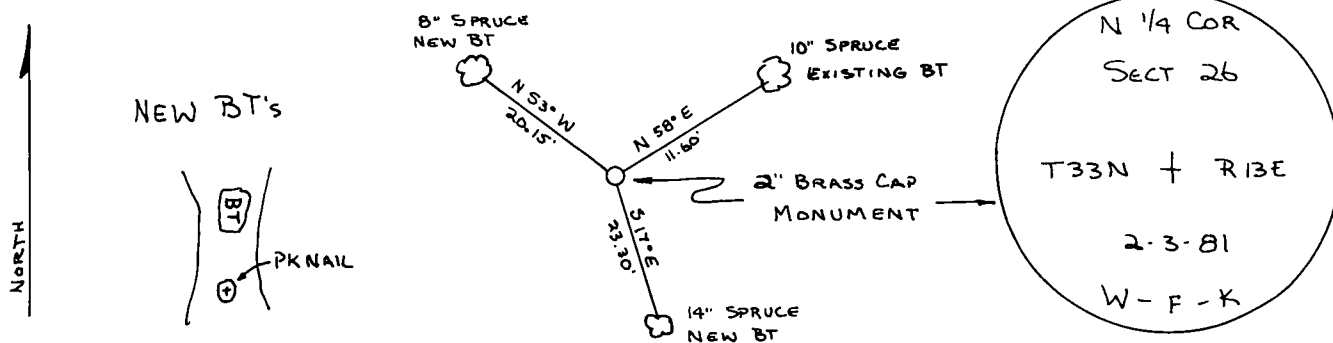
History of original corner establishment:  
ORIGINAL CORNER ESTABLISHED  
By JAMES NOWLIN IN 1865

Description of corner evidence found:  
FOUND 2" x 2" WOODEN POST WITH LOCATION TAG -  
REPLACED WITH 2" x 42" BRASS CAP MONUMENT



*William F. Kelly*

Description of monument and accessories I established to perpetuate the original location of this corner.



○ = Corner monument restored.

Dated at ELCHO, Wis., this 3<sup>rd</sup> day of FEB., 19 81.

Signature William F. Kelly Title COUNTY SURVEYOR Registration No. 1098  
(County Surveyor, Registered Land Surveyor, or other duly authorized official)

Office of Register of Deeds, County of \_\_\_\_\_, I hereby certify that the within instrument was filed in this office for record on the \_\_\_\_\_ day of \_\_\_\_\_, 19 \_\_\_\_\_ at \_\_\_\_\_ o'clock \_\_\_\_\_ M.

(Register of Deeds)

By \_\_\_\_\_ Deputy

FORM 985 M. C. MILLER CO. MILWAUKEE