

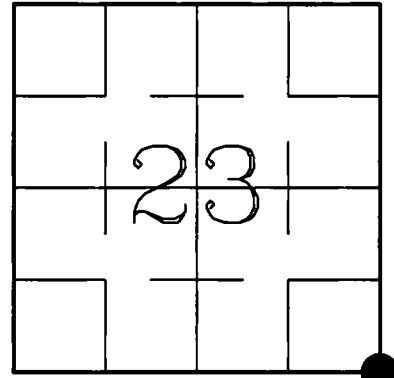
43313 23 00 00

U.S. PUBLIC LAND SURVEY MONUMENT RECORD

HISTORY OF ORIGINAL CORNER ESTABLISHMENT AND SUBSEQUENT RESTORATION AND DESCRIPTION OF ANY RECORD, MONUMENT OCCUPATIONAL, TESTIMONIAL OR OTHER EVIDENCE CONSIDERED:

The original corner was established in 1865 by James L. Nowlin, Original Bearing trees: Hemlock 25", N27W, 25lks., Elm 8", N50E, 15lks. The location for this corner falls in a popple clearcut with no remaining evidence. In 1974, Owens-Illinois' surveyor Wm Stuth set a capped pipe for a 40 corner one-quarter mile to the East. In April, 2004, Gerry Bahar and Jake Jensen located O.I.'s 40 corner and the S1/4 of Sec 24. We doubled that distance to the West and set a Langlade County Monument at this distance and on line with the S1/4 of Sec 24 and O.I.'s 40 corner.

● = LOCATION OF CORNER



SECTION 23

TOWNSHIP 33 NORTH, RANGE 13 EAST

TOWN OF LANGLADE NORTH

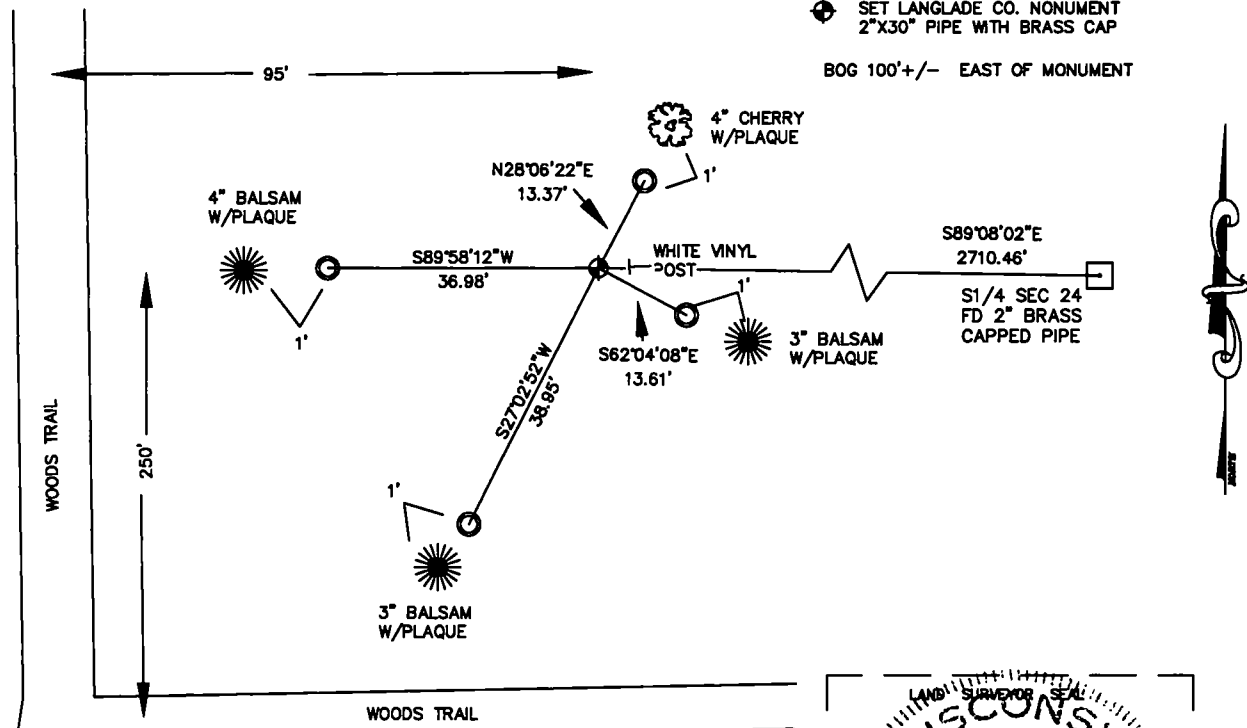
LANGLADE COUNTY, WISCONSIN

CORNER WAS: (CHECK ALL THAT APPLY)

- RESTORED THROUGH ACCEPTANCE OF AN OBLITERATED EVIDENCE LOCATION
- RESTORED THROUGH ACCEPTANCE OF A FOUND PERPETUATED LOCATION
- CONSIDERED A LOST CORNER AND REESTABLISHED THROUGH LOST CORNER PROPORTIONATE METHODS (INCLUDE A PLAN VIEW DRAWING SHOWING DISTANCES AND DIRECTIONS TO OTHER PUBLIC LAND SURVEY CORNERS USED FOR PROPORTIONING AND DETERMINING THE CORNER LOCATION)
- RESTORED OR REESTABLISHED IN A LOCATION THAT DIFFERS FROM A PREVIOUS RESTORATION OR REESTABLISHMENT (INCLUDE A PLAN VIEW DRAWING AND INDICATE WHAT WAS SET AND/OR FOUND)
- CHECK IF THERE IS ADDITIONAL INFORMATION ON BACK

DESCRIBE THE MONUMENT AND ACCESSORIES USED TO PERPETUATE THE LOCATION OF THE CORNER. (INCLUDE A PLAN VIEW DRAWING AND INDICATE WHAT WAS SET AND/OR FOUND) ALSO INCLUDE FOUR TIES TO THE SECTION CORNER AND DESCRIPTION OF THE TIES.

- SET 3/4"x24" REBAR TIES
 - ⊕ SET LANGLADE CO. MONUMENT 2"x30" PIPE WITH BRASS CAP
- BOG 100'+/- EAST OF MONUMENT

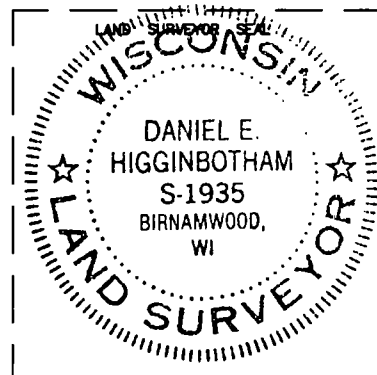


DANIEL E. HIGGINBOTHAM

(Type or print name) CERTIFY THAT THE CORNER LOCATION SHOWN ON THIS RECORD WAS DETERMINED BY ME OR UNDER MY DIRECTION AND CONTROL AND THAT THIS U.S. PUBLIC LAND SURVEY MONUMENT RECORD IS CORRECT AND COMPLETE TO THE BEST OF MY KNOWLEDGE AND BELIEF.

D. Higginbotham
SIGNATURE

12/06/05
DATE



INDEX NO. R21