

LANGLADE COUNTY U.S. PUBLIC LAND CORNER RESTORATION

The South Meander corner common to Sections 21 & 22, T. 33 N., R. 13 E., Langlade County, WI.

Corner was: (check all that apply)

- Restored through acceptance of an obliterated evidence location.
- Restored through acceptance of a found perpetuated location.
- Determined to be lost and re-established through proportionate methods.
 - Show bearings and distances to PLSS corners used for proportioning, and show original distances).
 - Restored/recovered/re-established in a location that differs from a previously established position.
- (Show difference in plan view below).
- Check here if additional information is shown on the reverse side of this form.

4331321 1800 2022

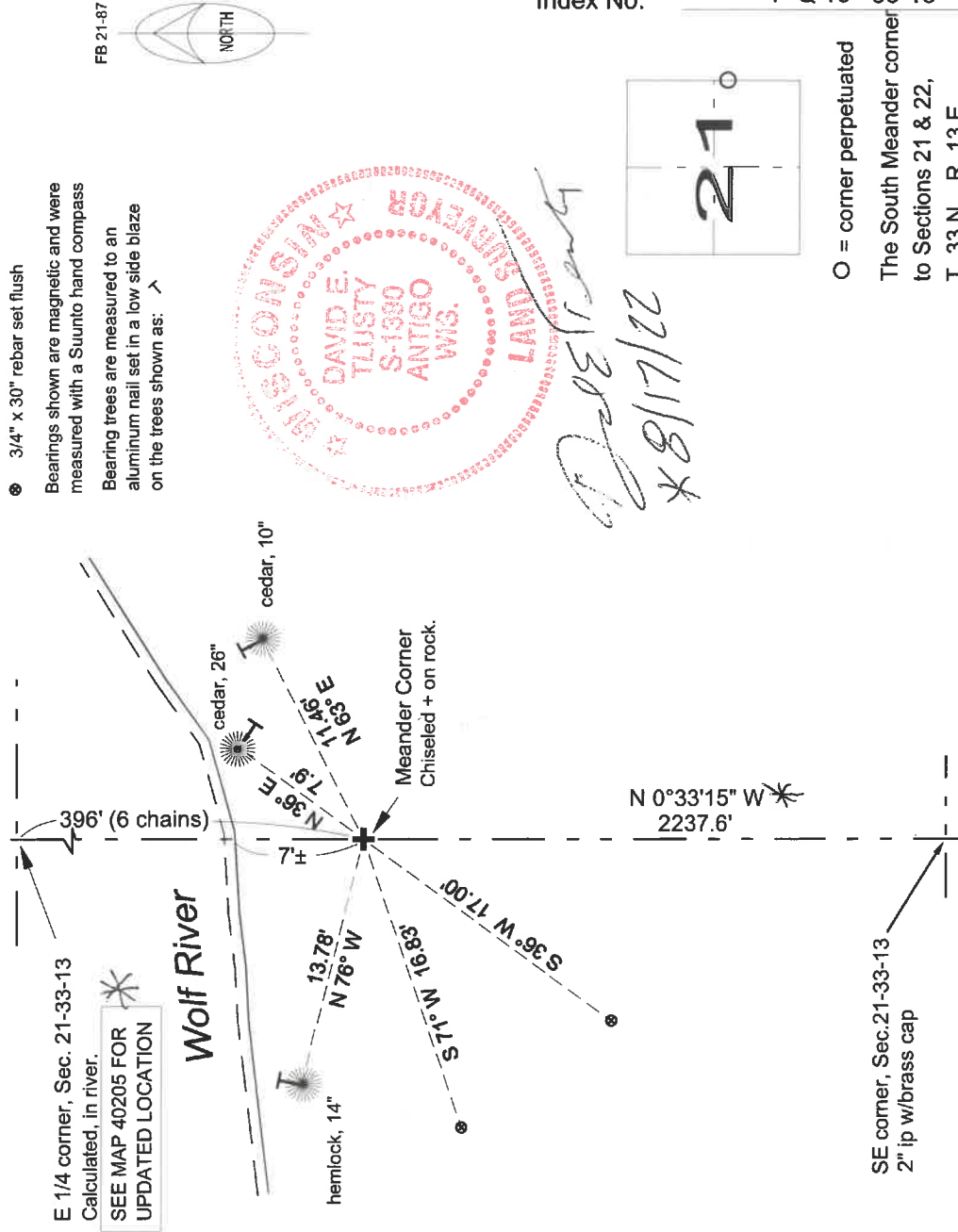
Describe record evidence, recovered physical evidence, occupational evidence, testimonial evidence and all other evidence considered in the recovery/restoration of the corner.

The original corner was established in 1865 by James Nowlin. At 36.00 chains north of the section corner, he established a meander corner on the bank of the river and marked two bearing trees: cedar, 30", S22W, 5 links (3.3 feet) and a cedar, 6", N36E, 12 links (7.9 feet). In 1903, Webley (FB126 Pg 71) "identified both org. BTS". 5/30/12 D. Tlusty, D. Higgenbotham, after tying into the NW and SW corners of Section 22, we determined a search area and found the original NE cedar BT, now 26" and leaning heavily over the water. From this tree, we measured original bearing and distance to reset the original MC location. Corner now falls on the south sloping face of a solid granite rock, about flush with the ground. Chiseled a "+" on said rock. Corner falls 7 feet south of the edge of the water and on the north edge of a 5' x 5' x 3' tall boulder. There is no evidence of the SW bearing tree - I suspect the entire tree fell into the river and washed away; most likely the original tree we found will do the same in a few years. Set and measured ties as shown below.

Physical description of the monument set:

To mark the corner, I chiseled a "+" on a granite rock and painted it blue. Corner is on high ground, 4 feet above and 7 feet from, the normal water level in the Wolf River.

Describe the accessories used to perpetuate the corner. Include a plan view drawing and accessories found/set. Describe measuring point on bearing trees. Show any topographic features that would aid in future recovery of the corner.



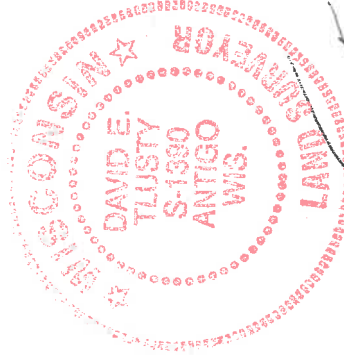
E 1/4 corner, Sec. 21-33-13
Calculated, in river.
SEE MAP 40205 FOR
UPDATED LOCATION

LEGEND

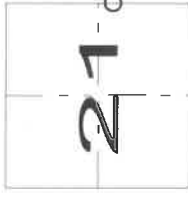
- ⊙ 3/4" x 30" rebar set flush
- Bearings shown are magnetic and were measured with a Suunto hand compass
- Bearing trees are measured to an aluminum nail set in a low side blaze on the trees shown as: ↗



FB 21-87



Delbert
*8/17/22



Index No. P-Q 13 33-13

○ = corner perpetuated

The South Meander corner to Sections 21 & 22, T. 33 N., R. 13 E., Langlade County, WI

SE corner, Sec.21-33-13
2" ip w/brass cap

I, David E. Tlusty, Registered Land Surveyor, as Langlade County Surveyor, certify that the corner location on this record was determined by me and that this U.S. Public Land Survey Monument Record is correct to the best of my knowledge and belief.

LANGLADE COUNTY U.S. PUBLIC LAND CORNER RESTORATION

The South Meander corner common to Sections 21 & 22, T. 33 N., R. 13 E., Langlade County, WI.

Corner was: (check all that apply) Z/
4331312 1800 2012

- Restored through acceptance of an obliterated evidence location.
- Restored through acceptance of a found perpetuated location.
- Determined to be lost and re-established through proportionate methods.
 - Show bearings and distances to PLSS corners used for proportioning, and show original distances).
 - Restored/recovered/re-established in a location that differs from a previously established position.
- (Show difference in plan view below).
- Check here if additional information is shown on the reverse side of this form.

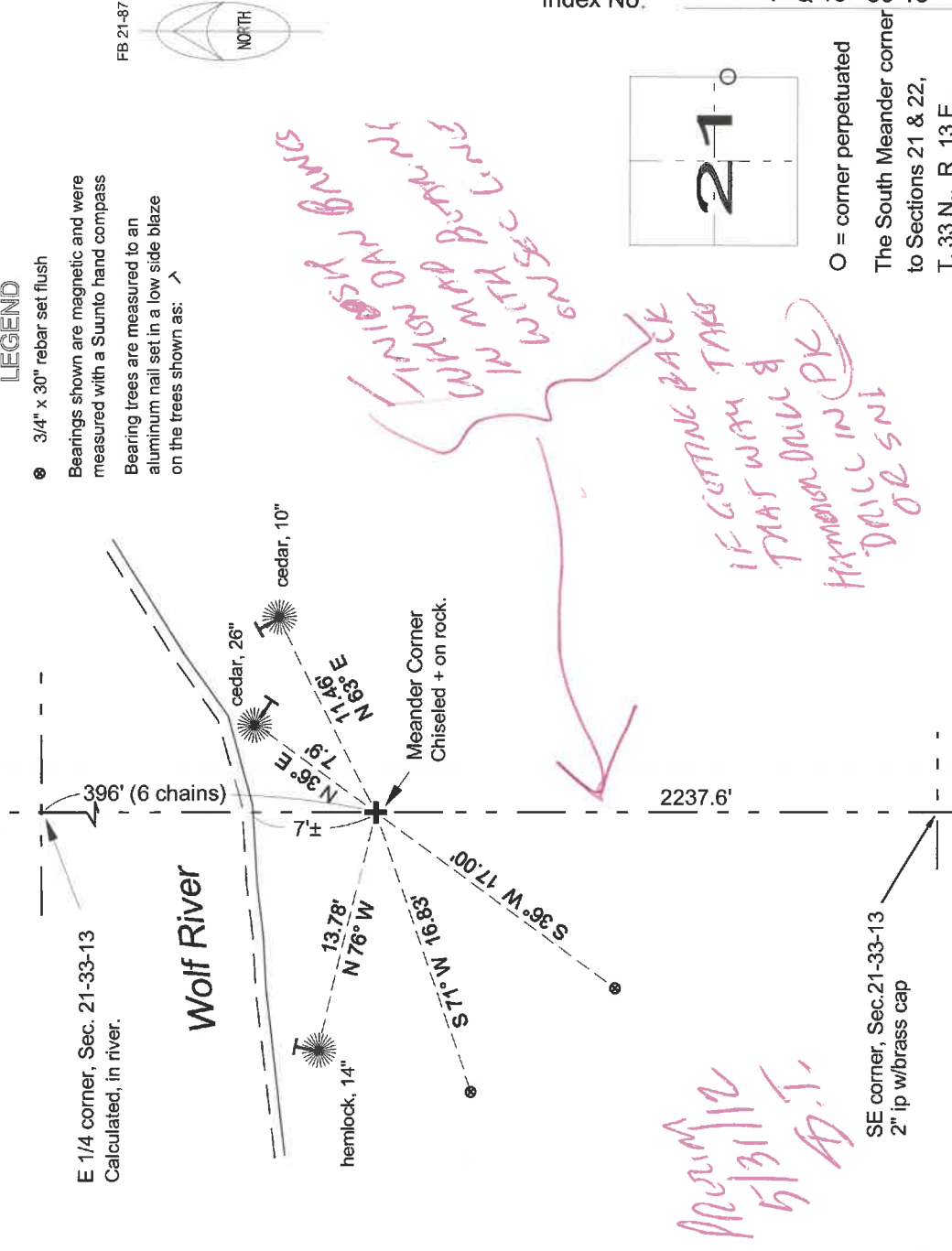
Describe record evidence, recovered physical evidence, occupational evidence, testimonial evidence and all other evidence considered in the recovery/restoration of the corner.

The original corner was established in 1865 by James Nowlin. At 36.00 chains north of the section corner, he established a meander corner on the bank of the river and marked two bearing trees: cedar, 30", S22W, 5 links (3.3 feet) and a cedar, 6", N36E, 12 links (7.9 feet). In 1903, Webley (FB126 Pg 71) "identified both org. BT'S". 5/30/12 D. Tlusty, D. Higgenbotham, after tying into the NW and SW corners of Section 22, we determined a search area and found the original NE cedar BT, now 26" and leaning heavily over the water. From this tree, we measured original bearing and distance to reset the original MC location. Corner now falls on the south sloping face of a solid granite rock, about flush with the ground. Chiseled a "+" on said rock. Corner falls 7 feet south of the edge of the water and on the north edge of a 5' x 5' x 3' tall boulder. There is no evidence of the SW bearing tree - I suspect the entire tree fell into the river and washed away; most likely the original tree we found will do the same in a few years. Set and measured ties as shown below.

Physical description of the monument set:

To mark the corner, I chiseled a "+" on a granite roak and painted it blue.
Corner is on high ground, 4 feet above and 7 feet from, the normal water level in the Wolf River.

Describe the accessories used to perpetuate the corner. Include a plan view drawing and accessories found/set. Describe measuring point on bearing trees. Show any topographic features that would aid in future recovery of the corner.



*Accum 12
5/31/12
D.T.*

SE corner, Sec.21-33-13
2" ip w/brass cap

I, David E. Tlusty, Registered Land Surveyor, as Langlade County Surveyor, certify that the corner location on this record was determined by me and that this U.S. Public Land Survey Monument Record is correct to the best of my knowledge and belief.

O = corner perpetuated
The South Meander corner to Sections 21 & 22, T. 33 N., R. 13 E., Langlade County, WI