

CERTIFIED LAND CORNER RESTORATION

Index No. P-4

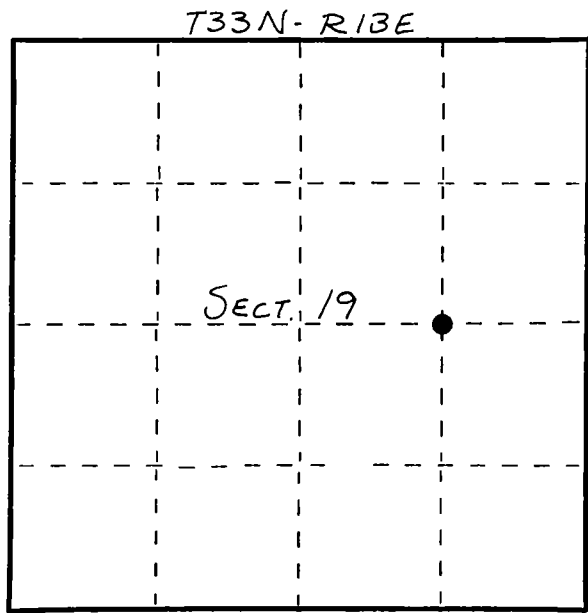
State of Wisconsin } ss.
County of LANGLEADE

I WILLIAM F. KELLY, do hereby certify that on the 27th day of OCTOBER, 1982, I found evidence of the E. 1/2 corner of ON E-W 1/4 LINE, SECT. 19, Township, North, Range, Fourth Principal Meridian, as described hereon; and that from this evidence I established a new monument and accessories as described hereon to perpetuate the original location of this corner.

Resident witnesses:

.....
.....
.....

FORM 985 M. E. MILLER CO., MILWAUKEE



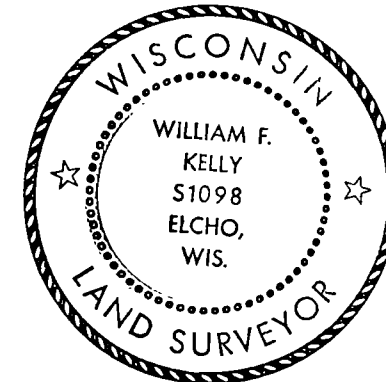
○ = Corner monument restored.

History of original corner establishment:

CORNER NOT ESTABLISHED DURING ORIGINAL GOV'T SURVEY.

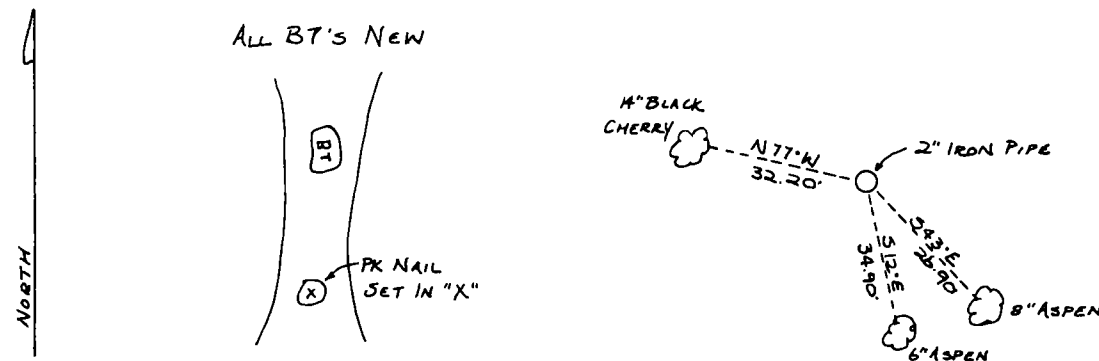
Description of corner evidence found:

CORNER EST FROM O-I CONTROL SURVEY SECT 19 T33N R13E



William F. Kelly
12-12-82

Description of monument and accessories I established to perpetuate the original location of this corner.



Dated at ELCHO, Wis., this 27th day of OCTOBER, 1982

Signature: William F. Kelly Title: COUNTY SURVEYOR Registration No. 1098
(County Surveyor, Registered Land Surveyor, or other duly authorized official)

Office of Register of Deeds, County of, I hereby certify that the within instrument was filed in this office for record on the day of, 19 at o'clock M.

(Register of Deeds)

By Deputy