

CERTIFIED LAND CORNER RESTORATION

Index No. Q-5

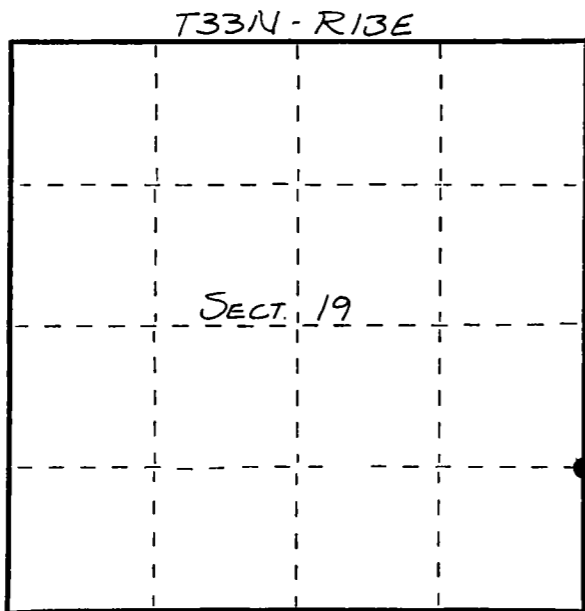
State of Wisconsin }
County of LANGLADE } ss.

I, WILLIAM F. KELLY, do hereby certify that on the 27th day of OCTOBER, 1982, I found evidence of the N 1/4 CORNER P.N.E. LINE of SECT. 19 Township 33 North, Range 13 EAST, Fourth Principal Meridian, as described hereon; and that from this evidence I established a new monument and accessories as described hereon to perpetuate the original location of this corner.

Resident witnesses:

.....
.....
.....

FORM 985 M. C. MILLER CO., MILWAUKEE



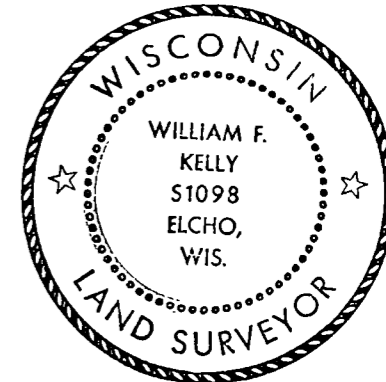
○ = Corner monument restored.

History of original corner establishment:

CORNER NOT ESTABLISHED DURING ORIGINAL GOV'T SURVEY.

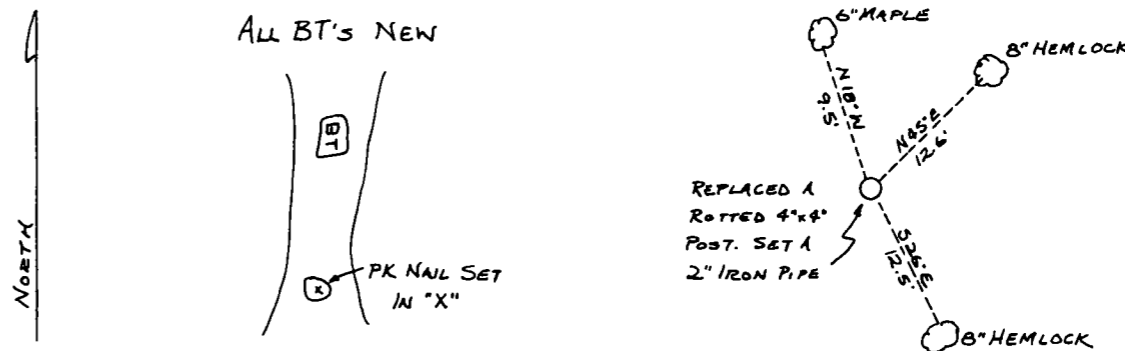
Description of corner evidence found:

EST. CORNER FROM O.I. CONTROL SURVEY OF SECT 19 T33N R13E



William F. Kelly
12-12-82

Description of monument and accessories I established to perpetuate the original location of this corner.



Dated at ELCHO, Wis., this 27th day of OCTOBER, 1982.

Signature: William F. Kelly Title: COUNTY SURVEYOR Registration No. 1098
(County Surveyor, Registered Land Surveyor, or other duly authorized official)

Office of Register of Deeds, County of _____, I hereby certify that the within instrument was filed in this office for record on the _____ day of _____, 19____ at _____ o'clock _____ M.

(Register of Deeds)

By _____ Deputy