

U.S. PUBLIC LAND SURVEY MONUMENT RECORD

(As Required By s. A-E 5 02, WI Adm. Code)

History of original corner establishment and subsequent restorations and description of any record, monument, occupational, testimonial or other evidence considered:

In 1865, J. Nowlin, set post and established 2 B.T.S; a Sugar 15" S.66°E. 75 lks. and a Sugar 8" N.66°W. 20 lks.

No further record evidence was found.

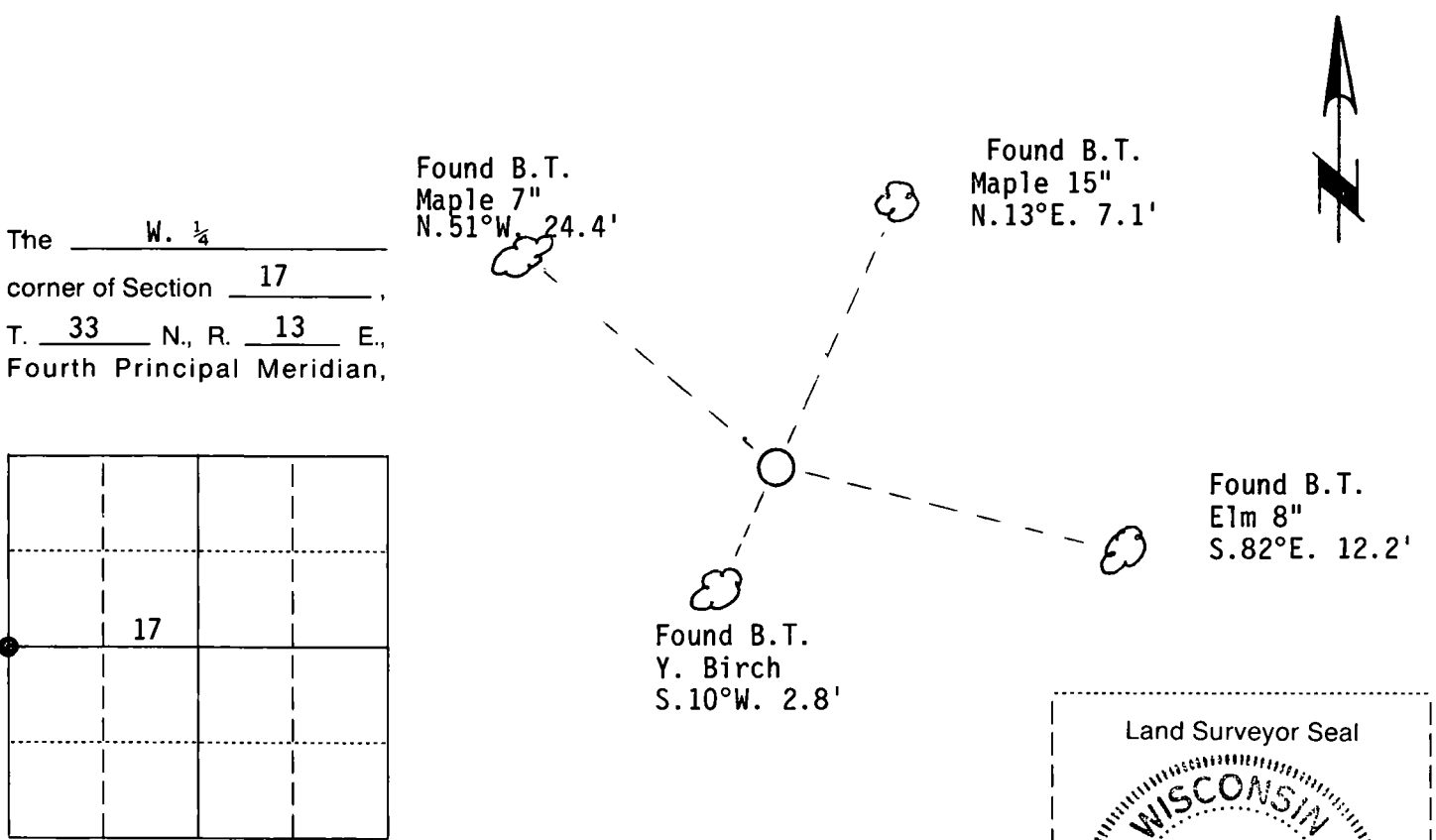
In 1991, I found a 2½" alum. post with cap set by W. Kelly in 1990; found 4" sq. cedar post next to alum. post; found large stump hole brng. N.66°W. 13.0' and another brng. S.70°E. 49.5' these check well with original B.T.s.

Corner was: (Check All That Apply)

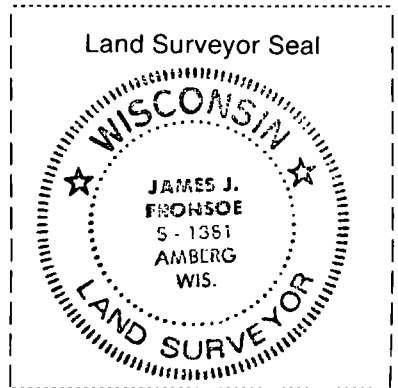
- Restored through acceptance of an obliterated evidence location
- Restored through acceptance of a found perpetuated location
- Considered a lost corner and reestablished through lost corner proportionate methods (include a plan view drawing showing distances and directions to other Public Land Survey Corners used for proportioning and determining the corner location)
- Restored or reestablished in a location that differs from a previous restoration or reestablishment (include a plan view drawing and indicate what was set and/or found)

Describe the monument and accessories used to perpetuate the location of this corner (include a plan view drawing and indicate what was set and/or found)

I accept the 2½" alum. post as best remaining evidence of corner and reference as shown.



● = Location of Corner



I, James J. Fronsoe S-1381
(type or print name) certify that the corner location shown on this record was determined by me or under my direction and control and that this U S Public Land Survey Monument Record is correct and complete to the best of my knowledge and belief

Signature James J. Fronsoe Date 8/16/91

Index No L-5

U. S. PUBLIC LAND SURVEY MONUMENT RECORD

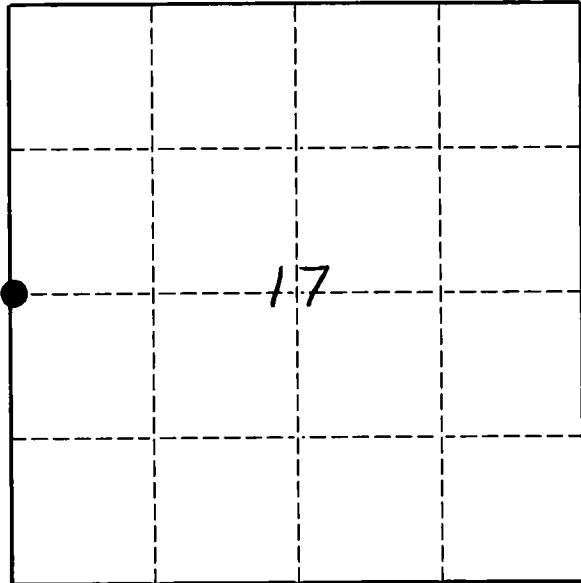
INSTRUCTIONS:

This record shall show the location of the corner and shall include all of the following nine elements (a through i).

- (a) Identify the corner by reference to the U.S. public land survey system.
 O = Corner monument restored.

*ORIG. COR. ESTABLISHED BY
 J. Nowlin, MAY 1865*

*COR. PERPETUATED BY OWENS-ILLINOIS
 IN 1969*



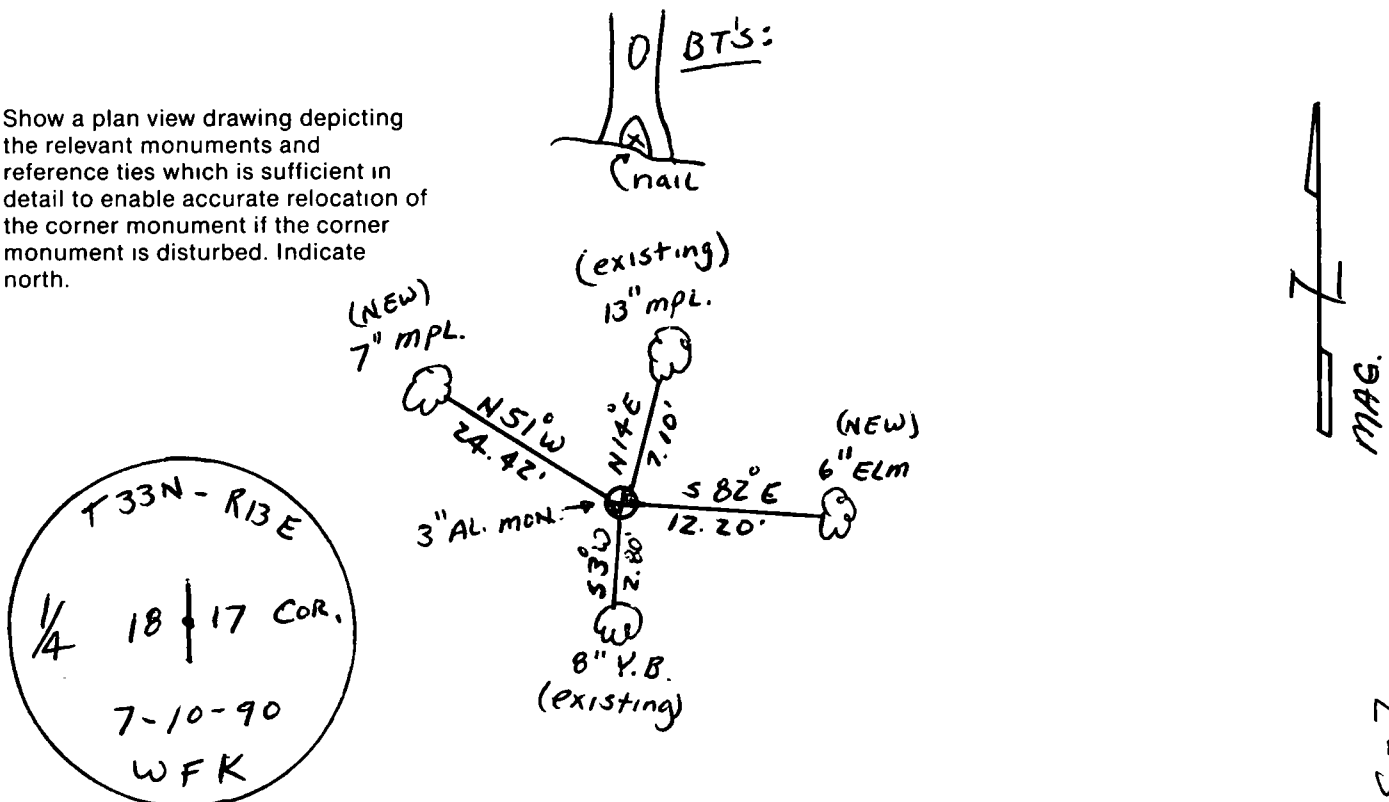
T 33N-R13E

- (b) Describe any record evidence, monument evidence, occupational evidence, testimonial evidence or any other material evidence you considered, and whether the monument was found or placed.

FOUND 4x4 SCRIBED CEDAR POST & 1 1/4" IRON PIPE ALONG SIDE. REPLACED IRON PIPE WITH 3" AL. MONUMENT FOR CORNER.

- (c) In the plan view drawing below, provide reference ties to at least 4 witness monuments, or, if the location is within a municipality, to at least 2 witness monuments. (Witness monuments shall be made of concrete, natural stone, iron or other equally durable material.) Describe witness monuments.

- (d) Show a plan view drawing depicting the relevant monuments and reference ties which is sufficient in detail to enable accurate relocation of the corner monument if the corner monument is disturbed. Indicate north.



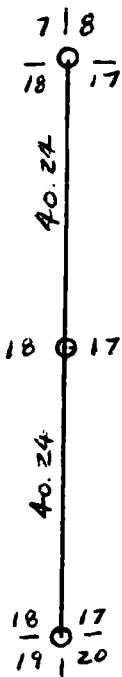
Describe any material discrepancy between the location of the corner as restored or reestablished and the location of that corner as previously restored or reestablished by distance and direction. Show the discrepancy on the plan view drawing under (d), above. Show the distances between the corner as previously restored or reestablished and (1) the corner as restored or reestablished, and (2) to at least 2 of the witness monuments shown on the drawing in (d), above.

NONE

(f) Was the corner restored through acceptance of (1) an obliterated evidence location, or, (2) a found perpetuated location?
 (2)

(g & h) Was the corner reestablished through lost corner proportionate methods? If so, show the method, including the directions and distances to other public land survey corners used as evidence or used for proportioning in determining the corner location.

COR. REESTABLISHED BY OWENS - ILLINOIS THROUGH SINGLE PROPORTIONING



(i) I, WILLIAM F. KELLY
(type or print name)

certify that the corner location shown on this record was determined by me or under my direction and control and that this U.S. Public Land Survey Monument Record is correct and complete to the best of my knowledge and belief.



William F. Kelly 8/27/90
Signature Date