

# U.S. PUBLIC LAND SURVEY MONUMENT RECORD

(As Required By s. A-E 5.02, WI Adm. Code)

History of original corner establishment and subsequent restorations and description of any record, monument, occupational, testimonial or other evidence considered:

In 1865, J. Nowlin, set post and established 2 B.T.s; a Fir 8" N.78°E. 13 lks. and a Fir 7" S.64°W. 10 lks.

No further record evidence was found;

In 1991, I was shown a roughly triangular granite stone, by F. Getchell, a life long resident of the adjacent farm, which was settled by his grandfather. The stone is more or less pointed and has an X chiseld on the top. Found the remains of a very old and badly decayed 6" sq. cedar stake at base of stone.

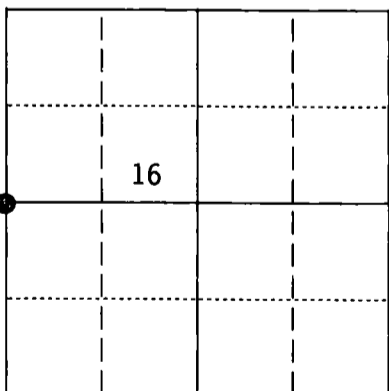
Corner was: (Check All That Apply)

- Restored through acceptance of an obliterated evidence location
- Restored through acceptance of a found perpetuated location
- Considered a lost corner and reestablished through lost corner proportionate methods (include a plan view drawing showing distances and directions to other Public Land Survey Corners used for proportioning and determining the corner location)
- Restored or reestablished in a location that differs from a previous restoration or reestablishment (include a plan view drawing and indicate what was set and/or found)

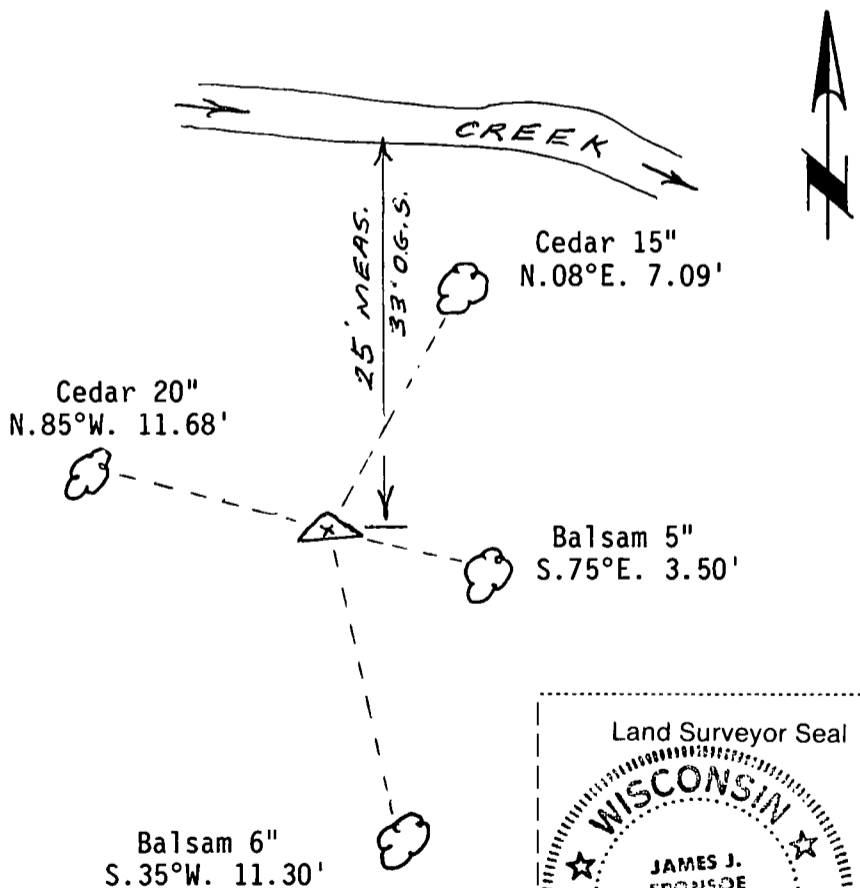
Describe the monument and accessories used to perpetuate the location of this corner (include a plan view drawing and indicate what was set and/or found)

Piled stones around corner stone to stabilize it and referenced with 50d spikes in blazed B.T.S as shown below.

The W. 1/4  
corner of Section 16,  
T. 33 N., R. 13 E.,  
Fourth Principal Meridian,

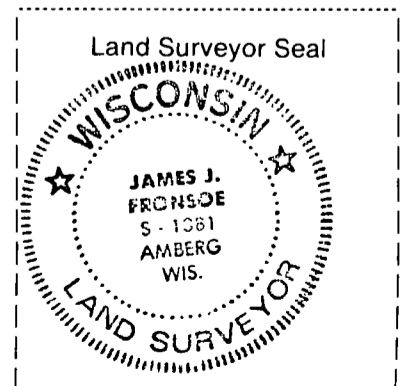


● = Location of Corner



I, James J. Fronsoe S-1381  
(type or print name) certify that the corner location shown on this record was determined by me or under my direction and control and that this U S Public Land Survey Monument Record is correct and complete to the best of my knowledge and belief

James Fronsoe 8/16/91  
Signature Date



Index No L-9